



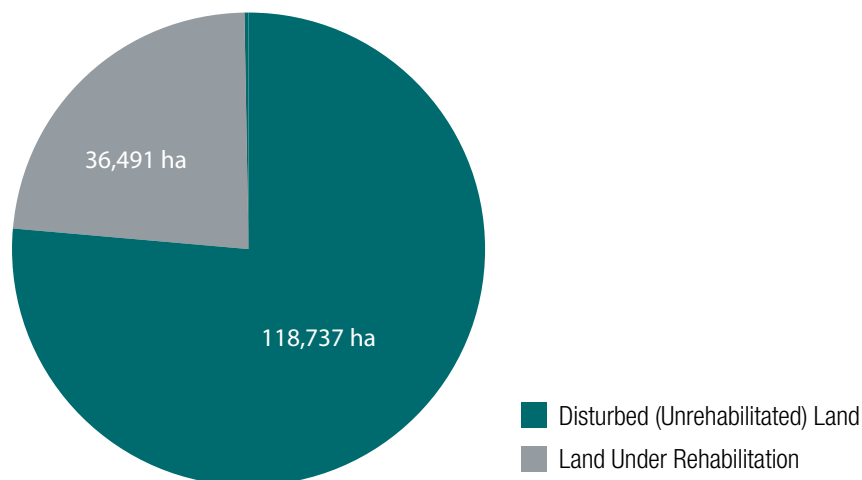
Summary Data

MRF tenement activities for 2016–2017 period

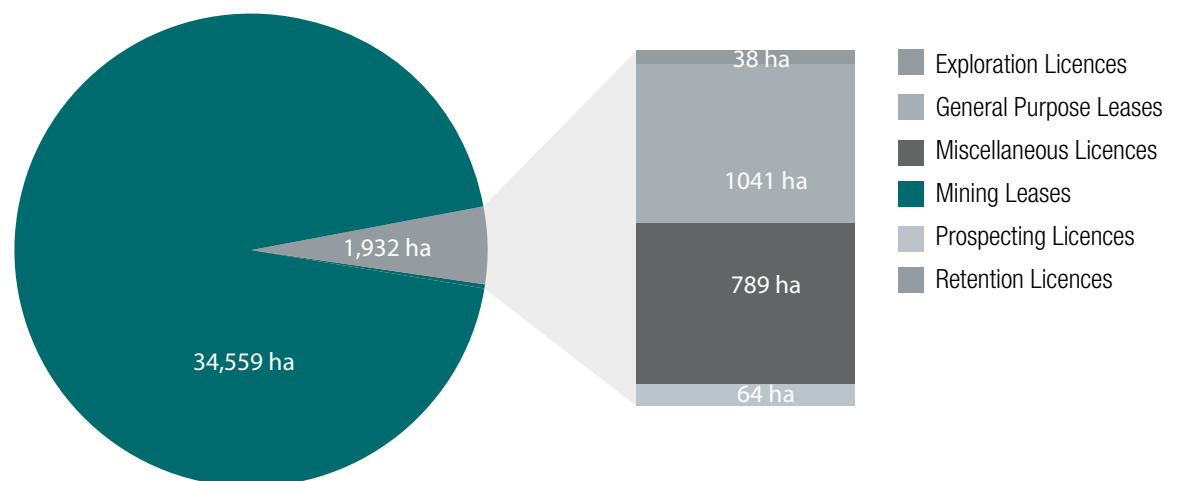
Released under section 15(3) of the *Mining Rehabilitation Fund Act 2012*

	Disturbed (unrehabilitated) land (hectares)	Land under rehabilitation (hectares)	Category Total Disturbance
Exploration Licences	9,509	38	9,547
General Purpose Leases	3,200	789	3,989
Miscellaneous Licences	12,145	1,041	13,186
Mining Leases	92,952	34,559	127,511
Prospecting Licences	558	64	622
Retention Licences	373	0	373
Total	118,737	36,491	155,228

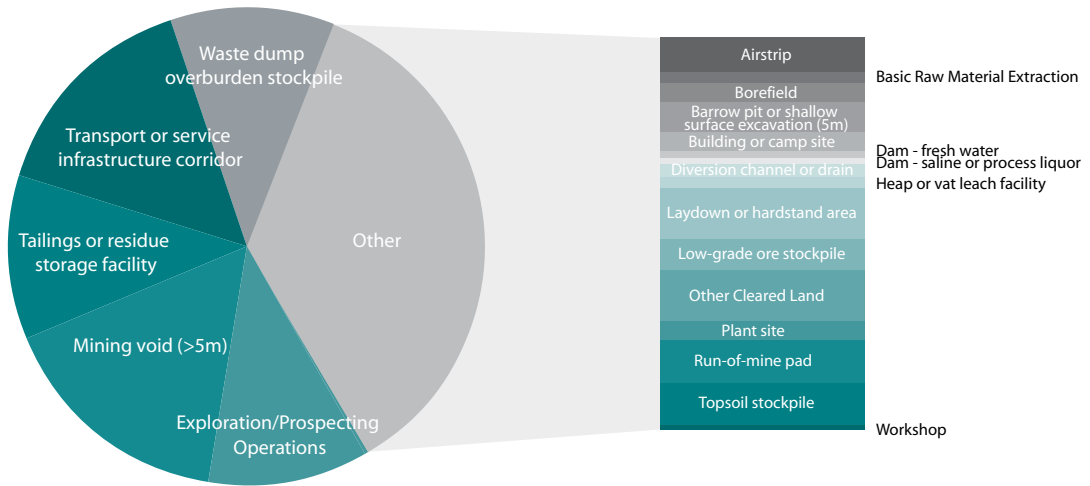
(based on data as at 7 August 2017)



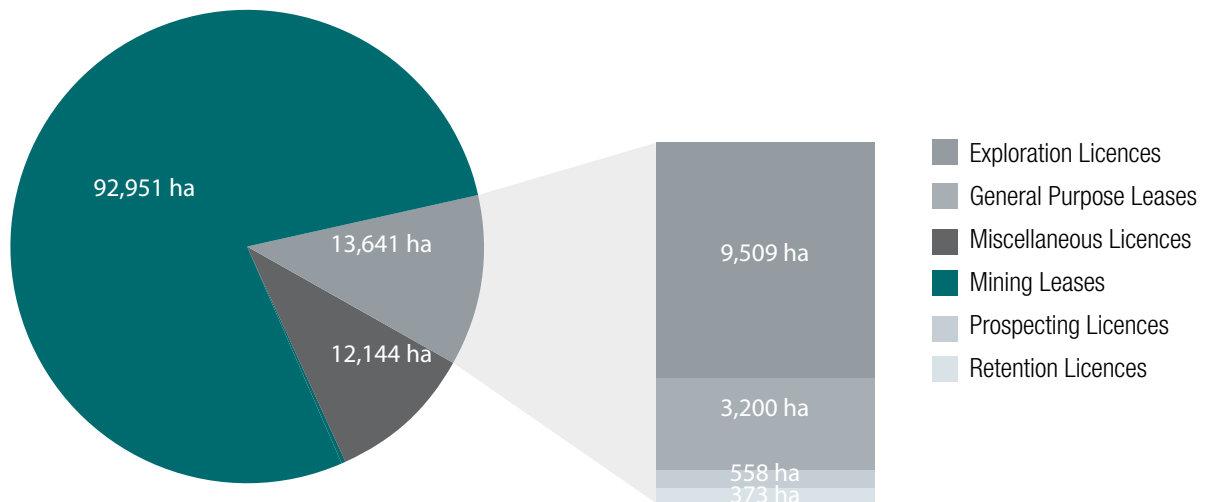
Total Disturbance



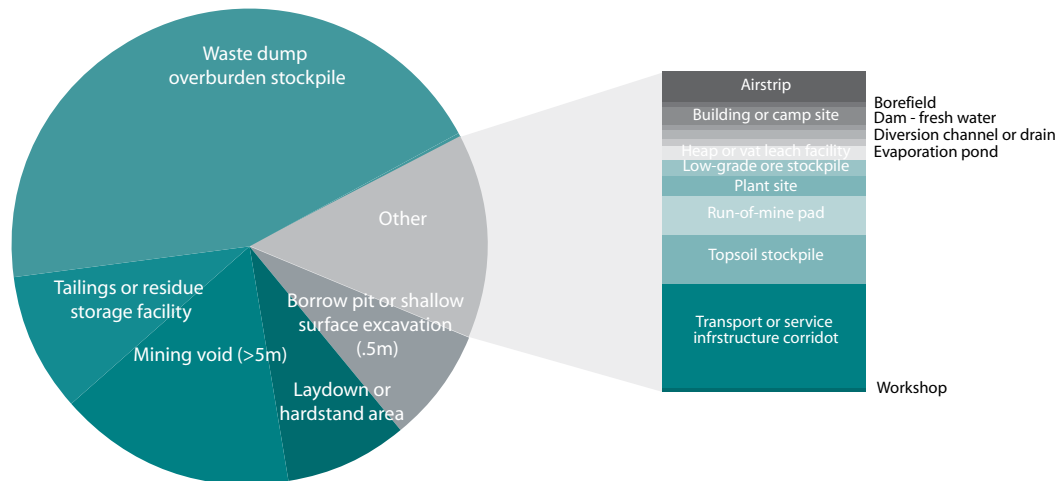
Land Under Rehabilitation



Disturbed (Unrehabilitated) Land



Disturbed (Unrehabilitated) Land



Land Under Rehabilitation

Mining Activity Type	Disturbance (ha)	Land Under Rehabilitation (ha)
Airstrip	1,643	173
Basic Raw Material Extraction - Processing equipment or stockpile associated with basic raw material extraction	635	27
Borefield	1,555	16
Borrow pit or shallow surface excavation (with a depth of less than 5 metres)	2,179	2,347
Building (other than workshop) or camp site	1,359	190
Core yard	173	3
Dam - fresh water	507	46
Dam - saline water or process liquor	550	11
Diversion channel or drain	1,025	149
Evaporation pond	1,254	84
Exploration/Prospecting Operations - Land (other than land under rehabilitation or rehabilitated land) that has been disturbed by exploration operations	20,057	0
Fuel storage facility	48	18
Heap or vat leach facility	597	177
Landfill site	198	38
Laydown or hardstand area	5,083	2,583
Low-grade ore stockpile (class 1)	1,098	90
Low-grade ore stockpile (class 2)	1,691	183
Mining void (with a depth of at least 5 metres) - above ground water level	5,675	1,735
Mining void (with a depth of at least 5 metres) - below ground water level	8,703	4,943
Other Cleared Land - Land (other than land under rehabilitation or rehabilitated land) that is cleared of vegetation and is not otherwise described in this Table	5,252	0
Plant site	1,474	250
Run-of-mine pad	3,491	435
Sewage pond	127	6
Tailings or residue storage facility (class 1)	12,487	2,863
Tailings or residue storage facility (class 2)	1,866	1,002
Topsoil stockpile	3,866	770
Transport or service infrastructure corridor	21,396	1,669
Waste dump or overburden stockpile (class 1)	12,271	13,500
Waste dump or overburden stockpile (class 2)	2,109	3,139
Workshop	369	44
Total	118,737	36,491

(based on data as at 7 August 2017)

Mining Activity Type (Simplified)	Disturbance (ha)	Land Under Rehabilitation (ha)
Airstrip	1,643	173
Basic Raw Material Extraction	635	27
Borefield	1,555	16
Borrow pit or shallow surface excavation (< 5 m)	2,179	2,348
Building or camp site	1,359	190
Core yard	173	3
Dam - fresh water	507	46
Dam - saline water or process liquor	550	11
Diversion channel or drain	1,025	149
Evaporation pond	1,254	84
Exploration/Prospecting Operations	20,057	0
Fuel storage facility	48	18
Heap or vat leach facility	597	177
Landfill site	198	38
Laydown or hardstand area	5,083	2,583
Low-grade ore stockpile	2,789	273
Mining void (> 5 m)	14,378	6,678
Other Cleared Land	5,252	0
Plant site	1,474	250
Run-of-mine pad	3,491	435
Sewage pond	127	6
Tailings or residue storage facility	14,353	3,864
Topsoil stockpile	3,866	770
Transport or service infrastructure corridor	21,396	1,669
Waste dump or overburden stockpile	14,379	16,639
Workshop	369	44
Total	118,737	36,491

(based on data as at 7 August 2017)

Note: This information is collected solely for the purposes of calculating the levy, and should be used with caution when drawing conclusions, particularly about trends in mining and rehabilitation activity. Additionally, it should be noted that:

- the Rehabilitation Liability Estimate (derived by applying the category unit rates to the reported areas of activity) is a 'normalised' base for deriving levies across activities and does not necessarily correlate in any way to 'real' rehabilitation costs at any one site.
- the reported area (in hectares) is a 'snapshot in time' that can be assessed by tenement holders at any point in the year.
- changes in disturbance and rehabilitation levels from one reporting period to the next may be comparing data that was not assessed at the same point in time (e.g. they could be assessed by the holder on 30 June in Year 1 and on 1 July in Year 2) and/or may not show the impact of increases and decreases that occur within the reporting period.
- the data does not include disturbance and rehabilitation attributable to operators under a State Agreement. It therefore reflects only a sub-set of mining activity across the State and is unlikely to be indicative of the industry as a whole.