

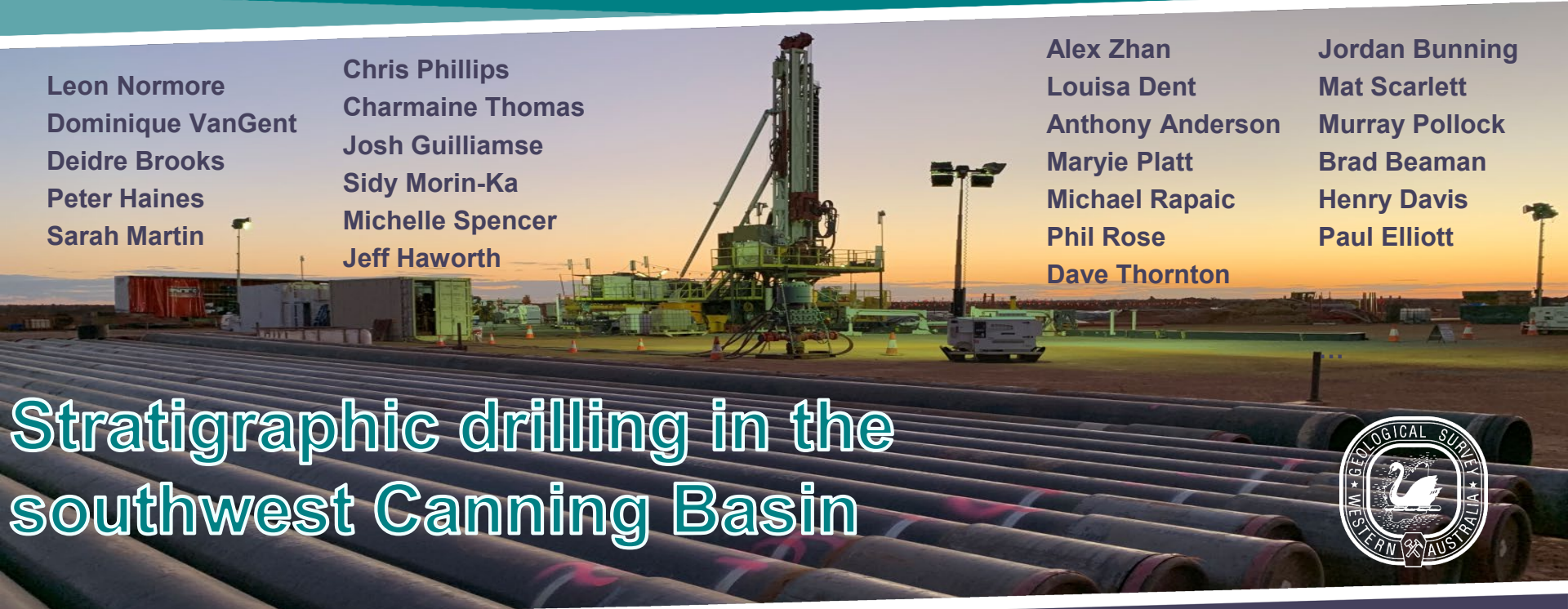
# WAUKARLYCARLY 1

Leon Normore  
Dominique VanGent  
Deidre Brooks  
Peter Haines  
Sarah Martin

Chris Phillips  
Charmaine Thomas  
Josh Guilliamse  
Sidy Morin-Ka  
Michelle Spencer  
Jeff Haworth

Alex Zhan  
Louisa Dent  
Anthony Anderson  
Maryie Platt  
Michael Rapaic  
Phil Rose  
Dave Thornton

Jordan Bunning  
Mat Scarlett  
Murray Pollock  
Brad Beaman  
Henry Davis  
Paul Elliott



Stratigraphic drilling in the  
southwest Canning Basin

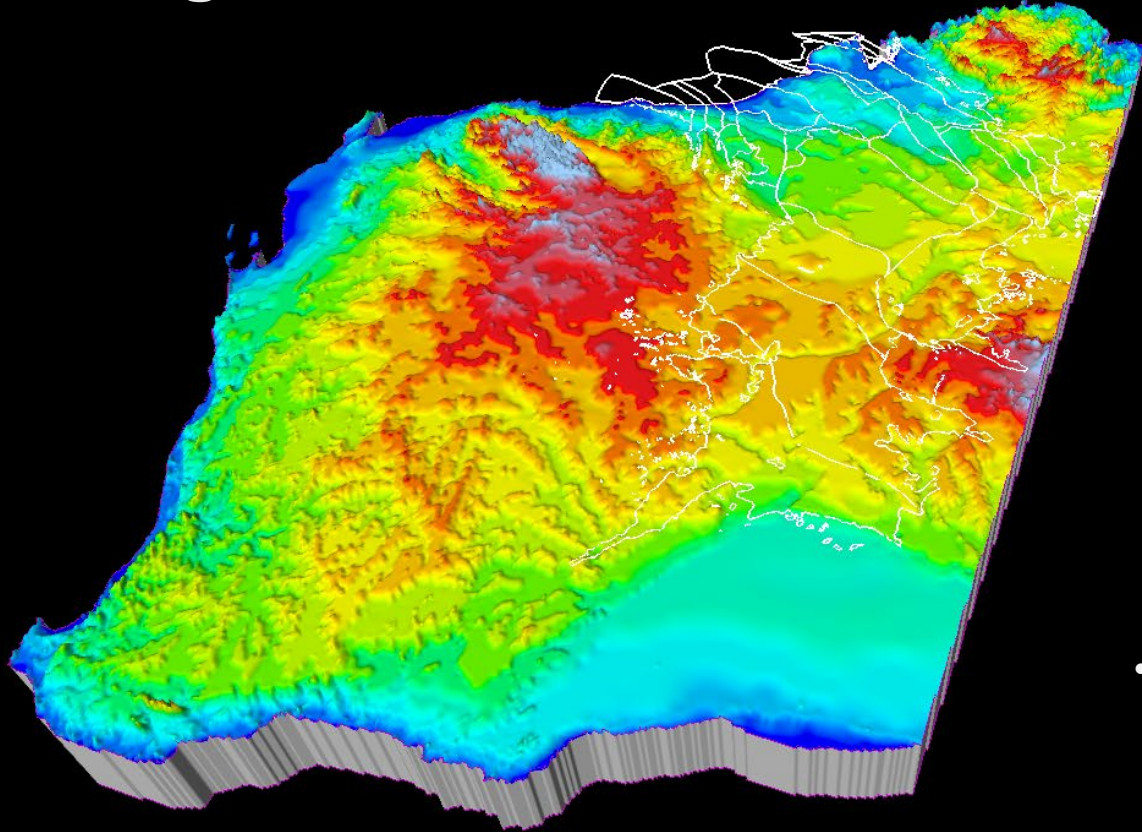


# Presentation Overview

- Canning Basin Summary
- Stage 1: Kidson Sub-basin Seismic Survey
- Stage 2: Deep Stratigraphic Drilling
  - Drillsite selection
  - Stakeholder Engagement
  - Well Design
  - Preliminary Results

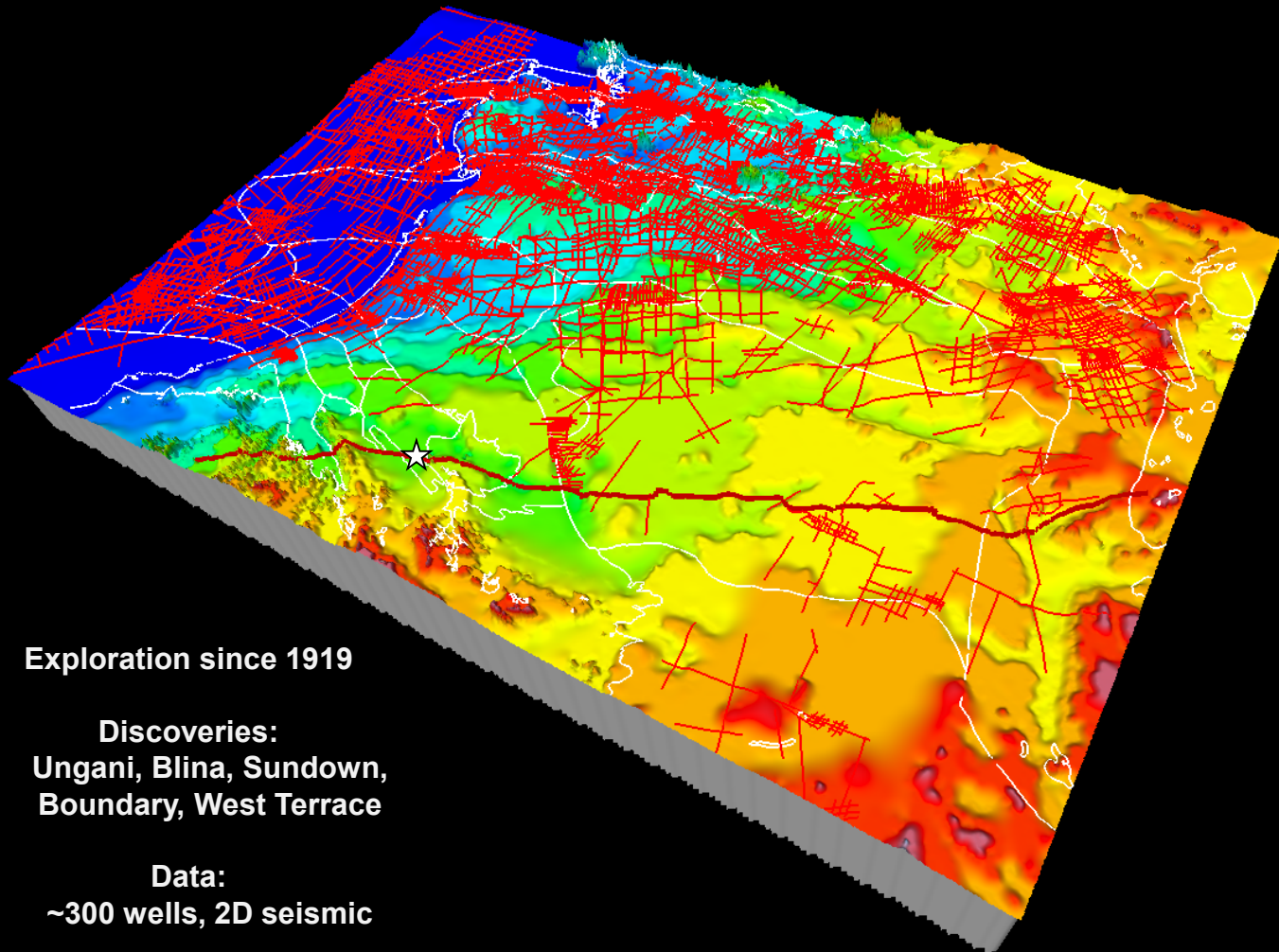


# Canning Basin overview



- Mostly onshore intracratonic basin
- Ordovician to Cretaceous





**Exploration since 1919**

**Discoveries:  
Ungani, Blina, Sundown,  
Boundary, West Terrace**

**Data:  
~300 wells, 2D seismic**



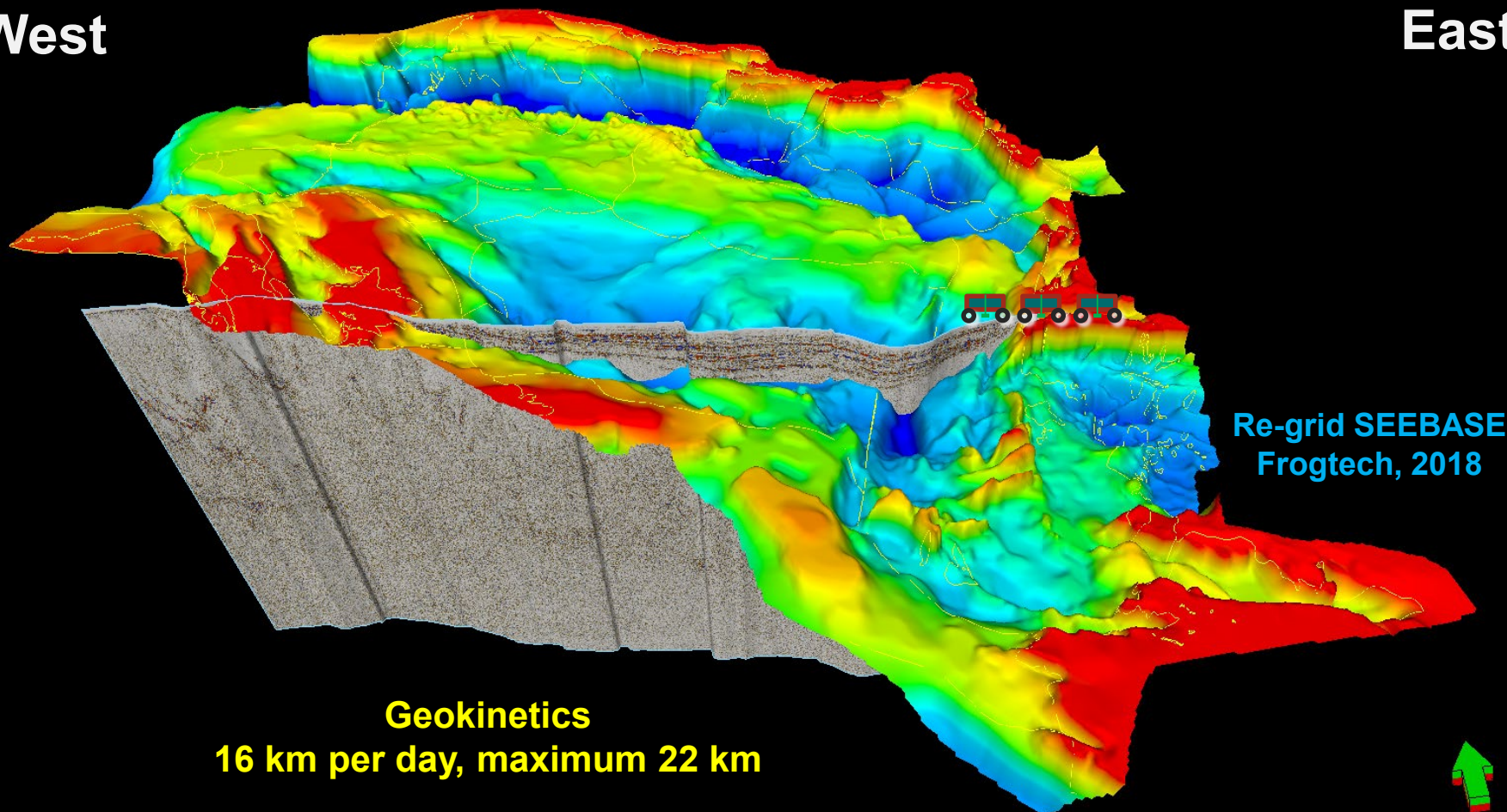
An aerial photograph showing a long line of white seismic survey vehicles, including trucks and trailers, traveling along a wide dirt road in a vast, arid desert landscape. The terrain is covered with sparse, low-lying vegetation. The sky is clear and bright. The text is overlaid on the upper left portion of the image.

Collaborative State-Federal Project  
GA, Exploring for the Future Program  
GSWA, Exploration Incentive Scheme

Stage 1:  
Kidson Sub-basin  
Seismic Survey

West

East



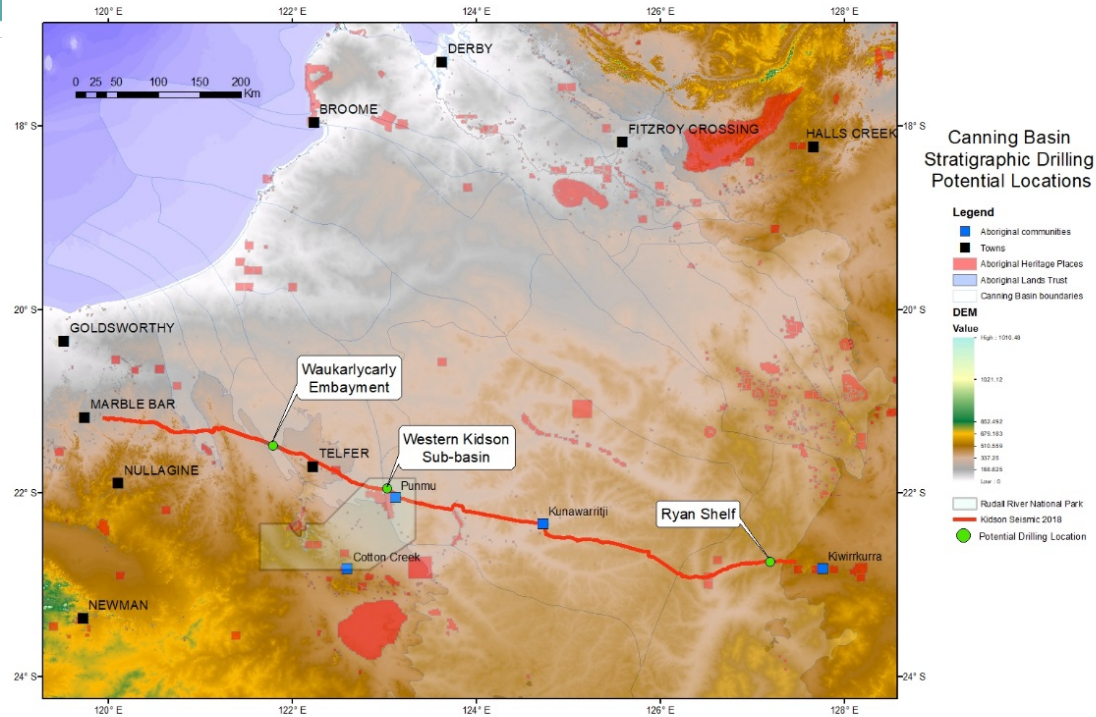
**Geokinetics**  
**16 km per day, maximum 22 km**

# Stage 2: Stratigraphic Drilling

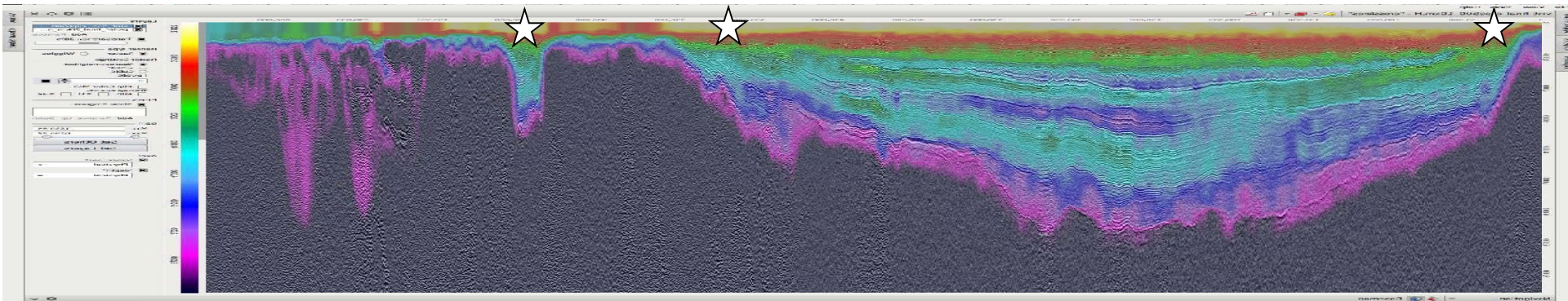
- Mineral resources,
- Energy resources,
- Groundwater resources,
- Decarbonisation,
- Basin Evolution,
- Cratonic History



# Drillsite selection







# Stakeholder Engagement

- Western Desert Lands Aboriginal Corporation
- NewCrest - Telfer
- Metals X - Nifty
- Shire of East Pilbara
- Main Roads
- Tenement holders



# Drillsite Layout



# Well Design

Conductor casing to 23.63m  
12 ¼" hole / 9 5/8" casing

Secondary casing to 218m  
8 ½" hole / 7" casing

Third casing string to 727.10m  
6 1/8" hole / 5 ½" casing  
\*SQ core (85mm) @ 580m and ream

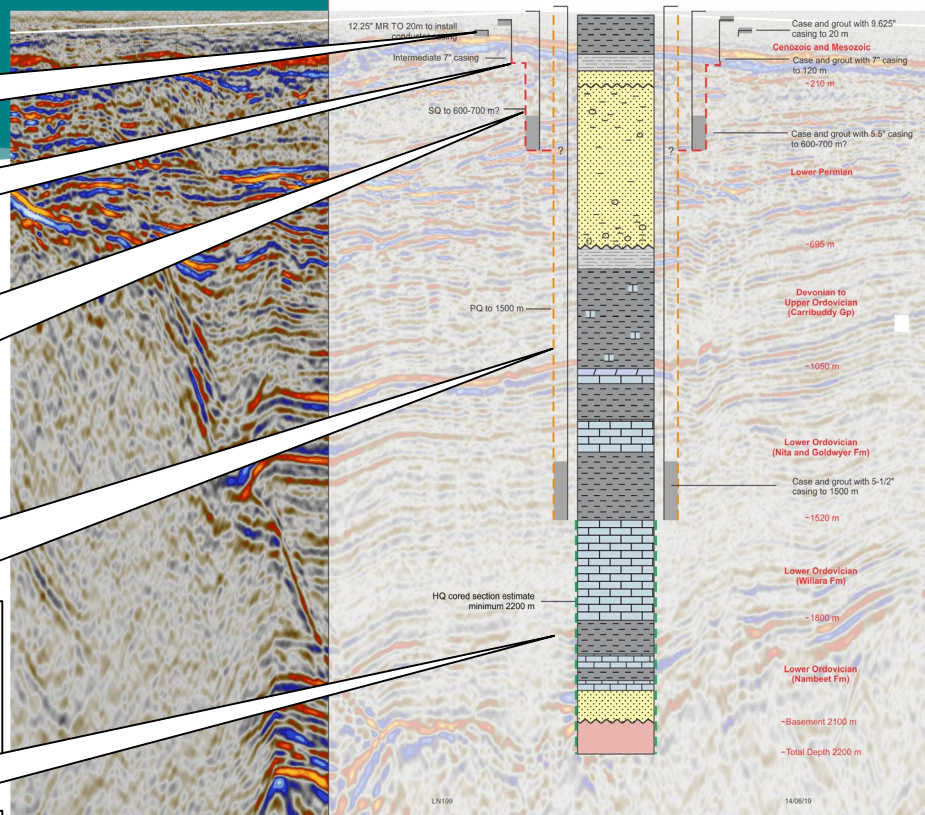
Fourth casing string to 1602m  
PQ core (85mm) hole / 4 ½" casing

HQ core (63.5 mm diameter)  
open hole to Total Depth

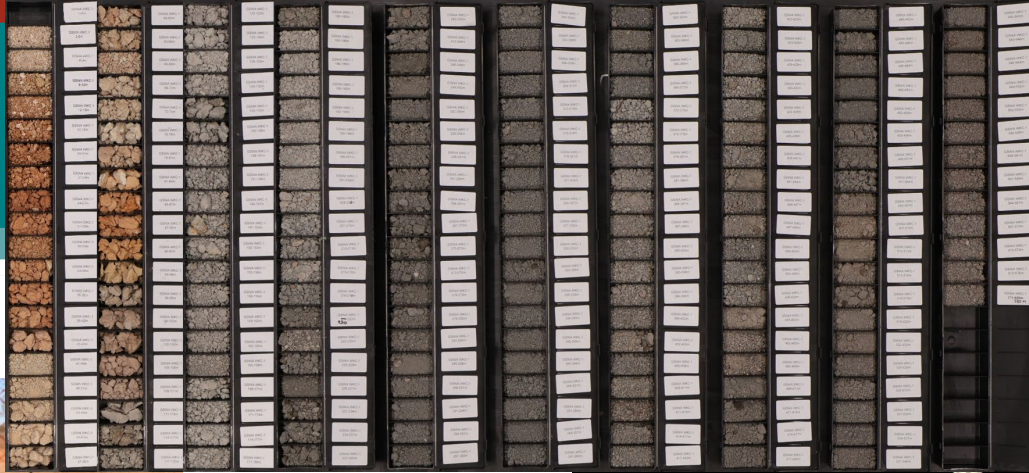
## GSWA Waukarlyarly 1 (predicted)

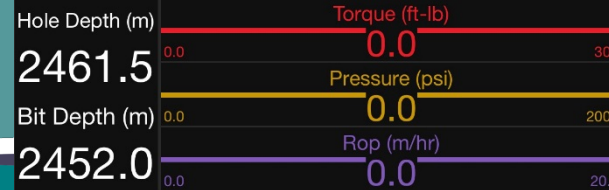
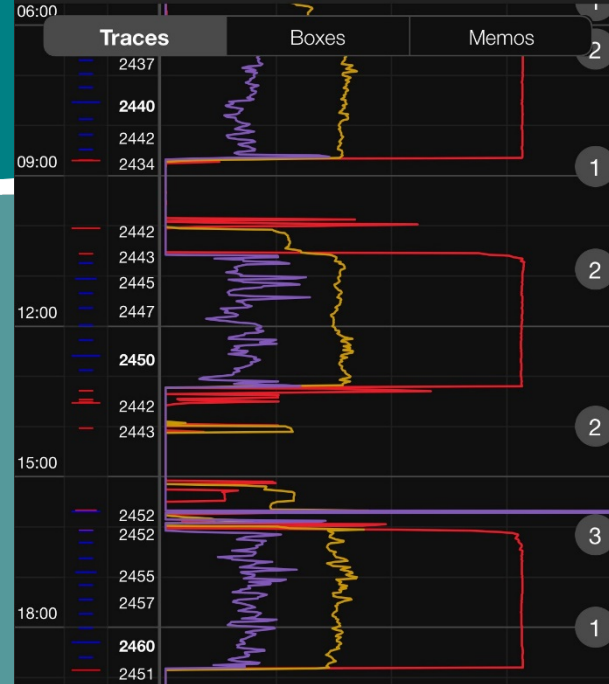
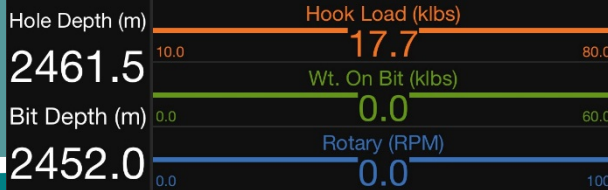
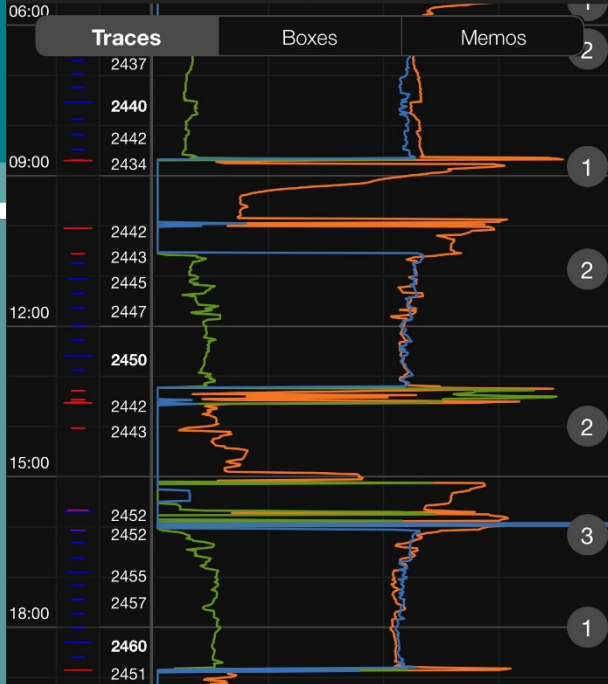
Hole Description

Casing Description



# Rotary vs DD

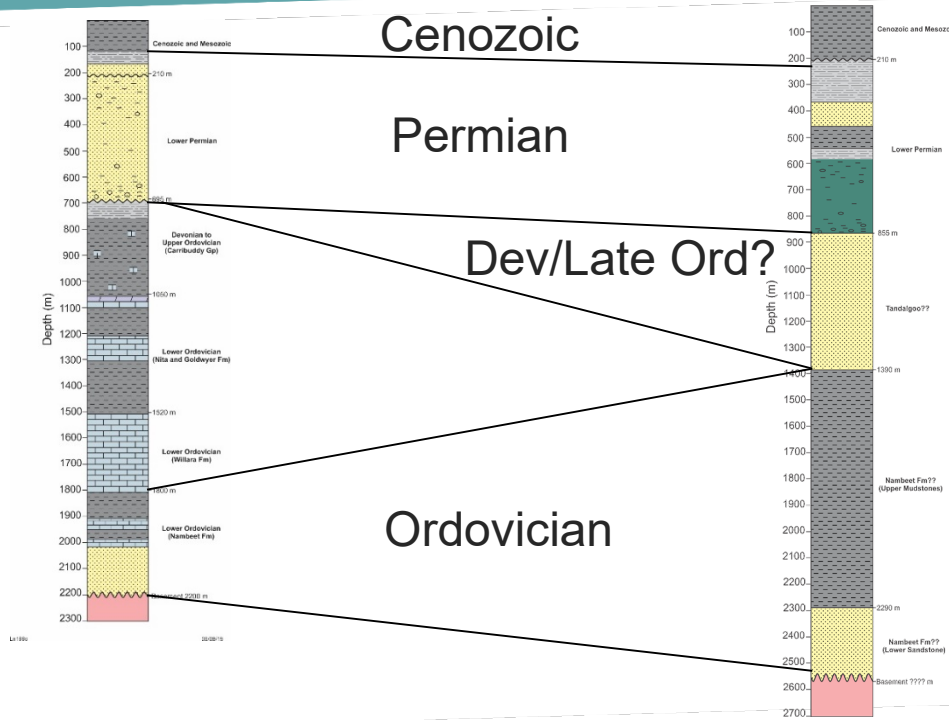




# Geology of Waukarlycarly Embayment

- Prognosis vs Actual
- CO<sup>2</sup> sequestration potential
- Source Rock Potential
- Biostratigraphy
- Geochronology
- Post well analysis

# Well Prognosis vs Actual





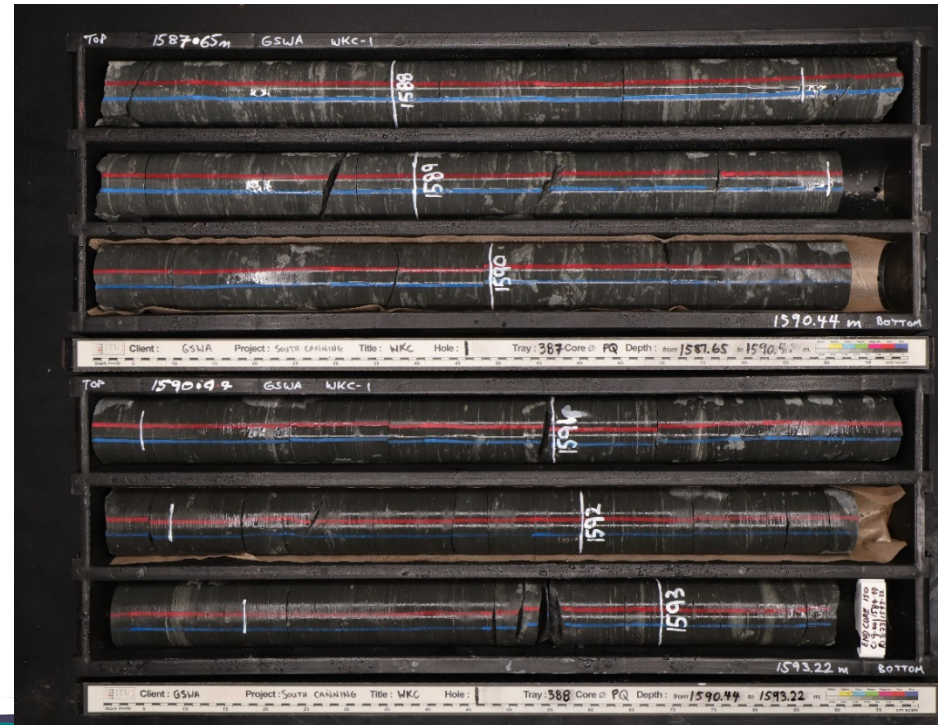
# Reservoir Potential

- Over 500m thick permeable and porous sandstone below 800 m
- Diamictite seal above
- Aerial extent of Waukarlycarly 5000 km<sup>2</sup>

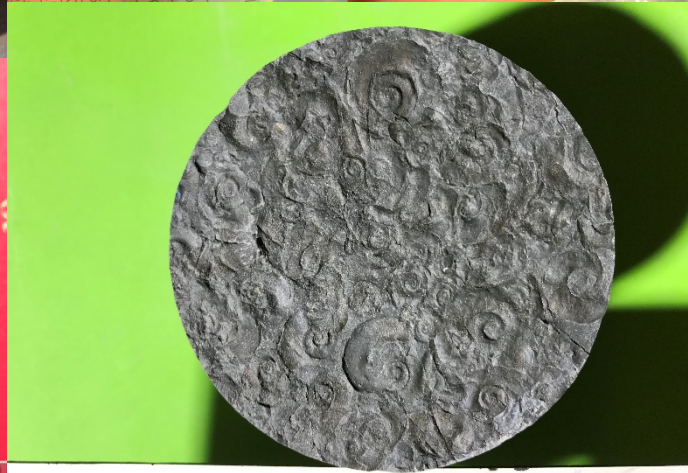


# Source Rock Potential

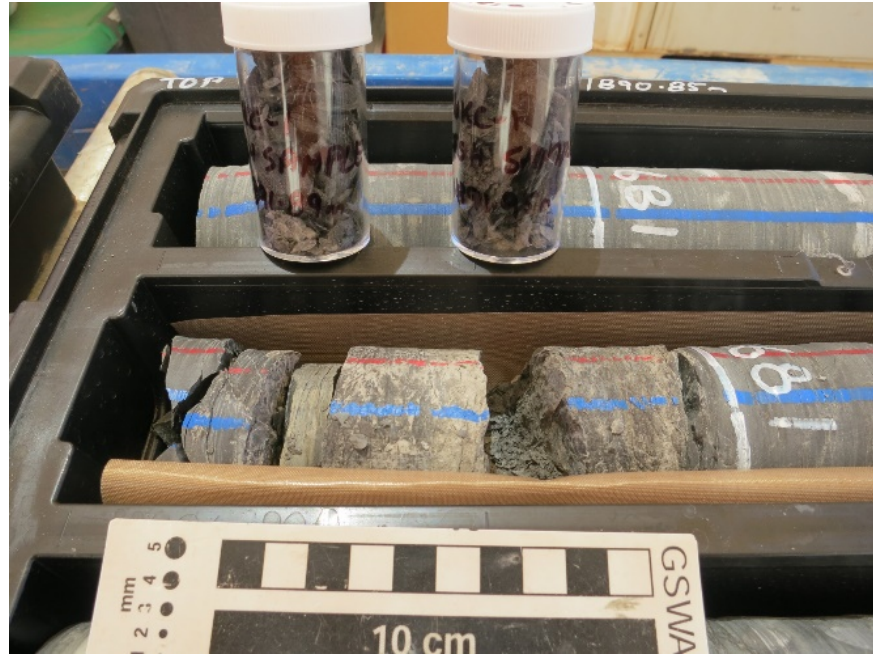
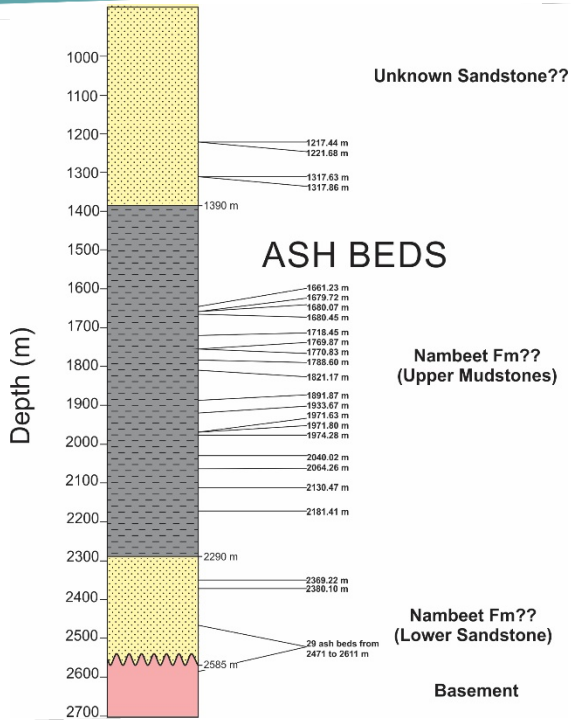
- 900m thick dark grey to black mudstone
- TOC and Rock Eval analysis required
- Previous analysis from Nambuet Fm mudstones in Olympic 1 had TOC up to 3.28% (Normore and Dent, 2017)



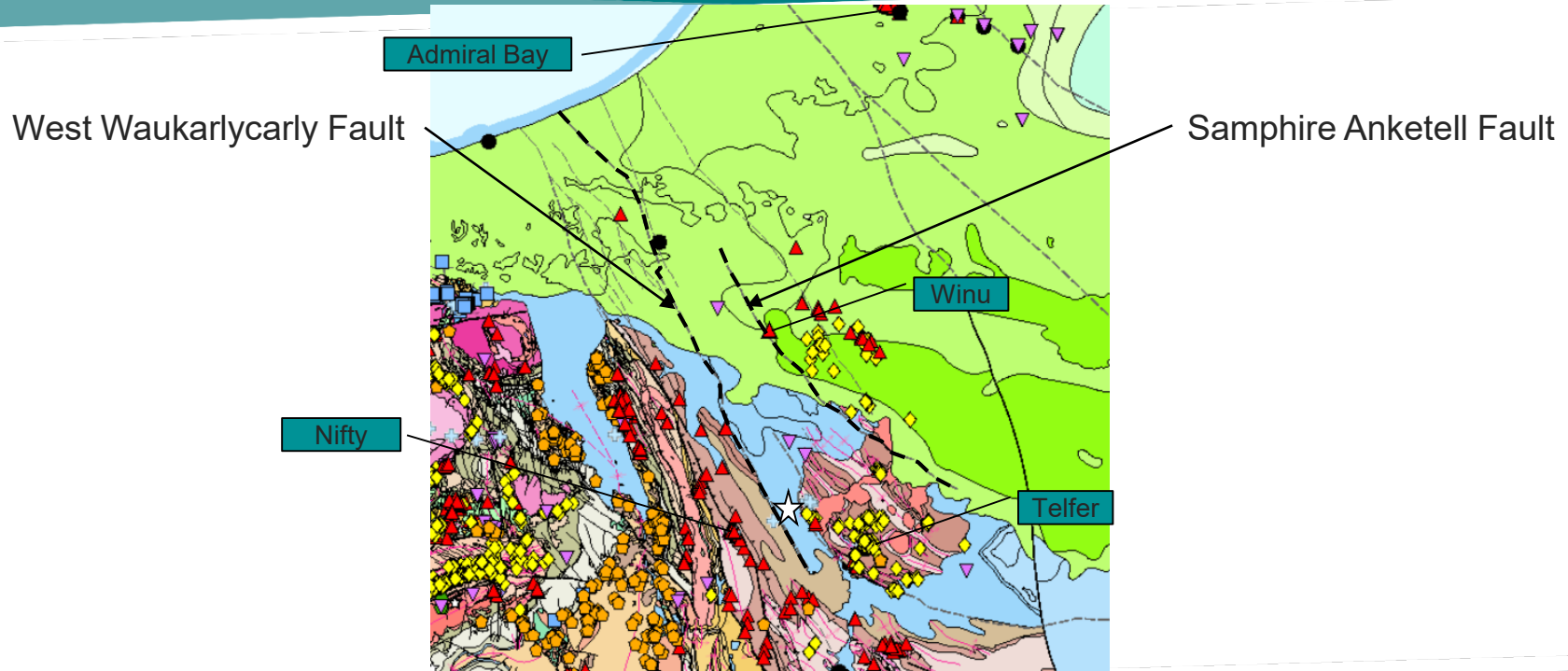
# Fossils



# Geochronology



# Structure and Mineralization



# Goals Accomplished

- 580 m cuttings, 2100 m continuous core
- 95 m of Pre-Canning Basement
- Complete set of wireline logs
- Vertical Seismic Profile
- Post well analysis

