



Government of Western Australia
Department of Mines and Petroleum

A magnetotelluric (MT) survey across the Albany Fraser Orogen, Western Australia

J Spratt¹, MC Dentith², S Evans³,

1 - Consultant, Wakefield, Quebec, Canada

2 - Centre for Exploration Targeting, The University of Western Australia

3 - Moombarriga Geoscience



THE UNIVERSITY OF
WESTERN AUSTRALIA



ROYALTIES
FOR REGIONS

EXPLORATION INCENTIVE SCHEME

Centre for **EXPLORATION
TARGETING**



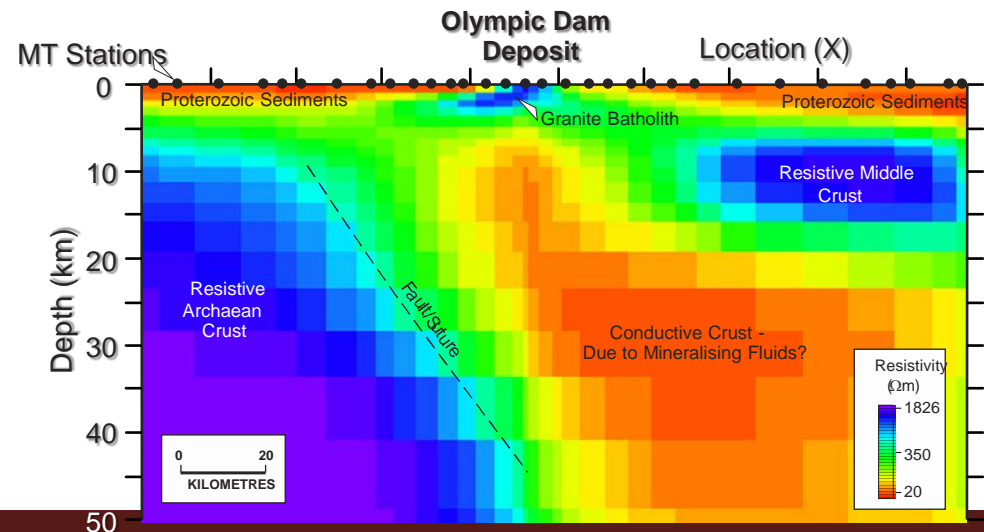
Geological Survey of
Western Australia



Magnetotellurics



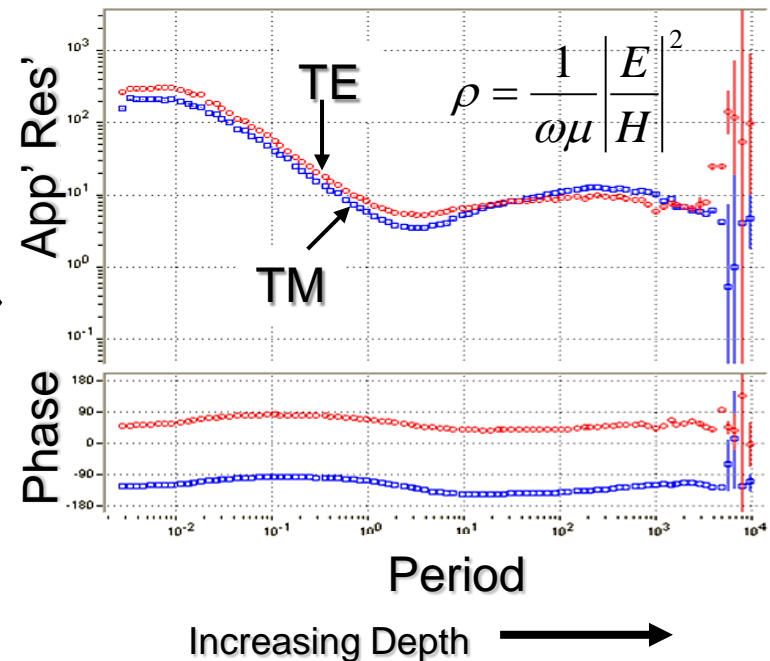
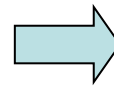
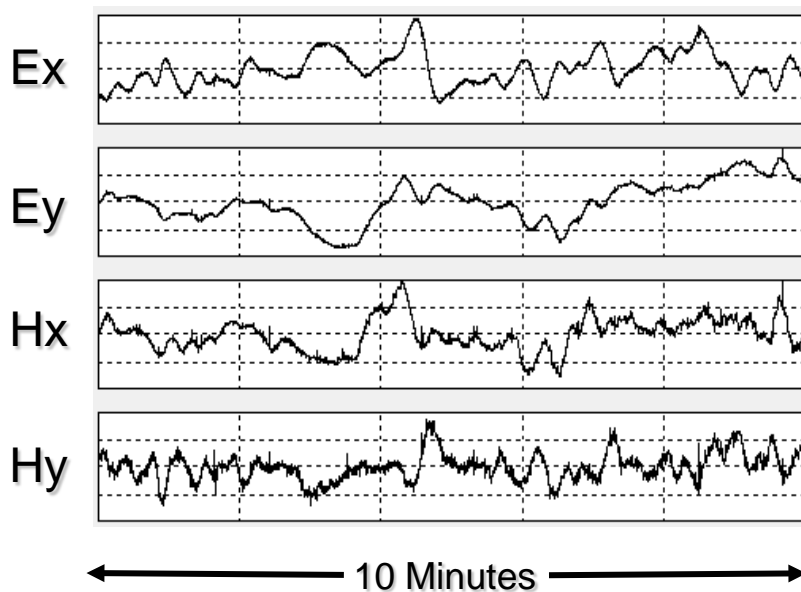
- **Passive, frequency domain, electromagnetic method.**
 - Maps electrical conductivity (conductance).
- **Deep penetrating.**
 - Depth penetration depends on recording time.
 - Routinely used to map entire lithosphere.
- **Established 'academic' tool, emerging exploration applications**
 - 😊 Cheap.
 - 😊 Can see deep.
 - 😞 Limited resolution.
 - 😞 Controls on deep cond' poorly understood.



Magnetotellurics

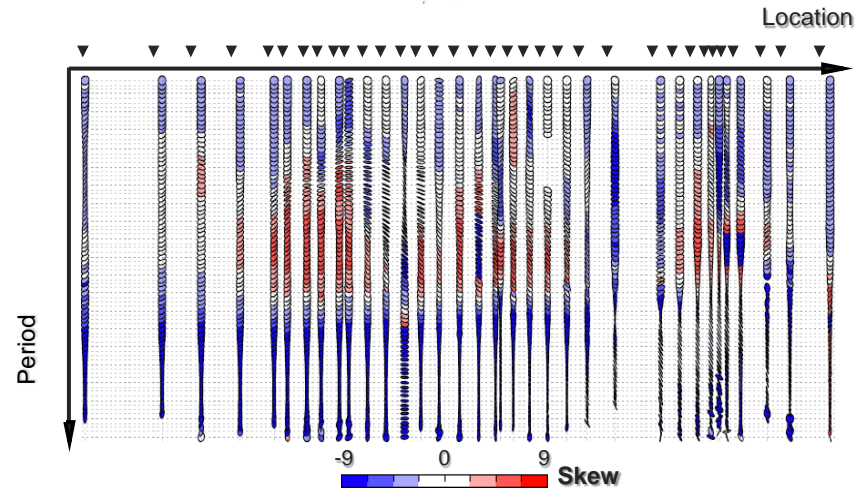
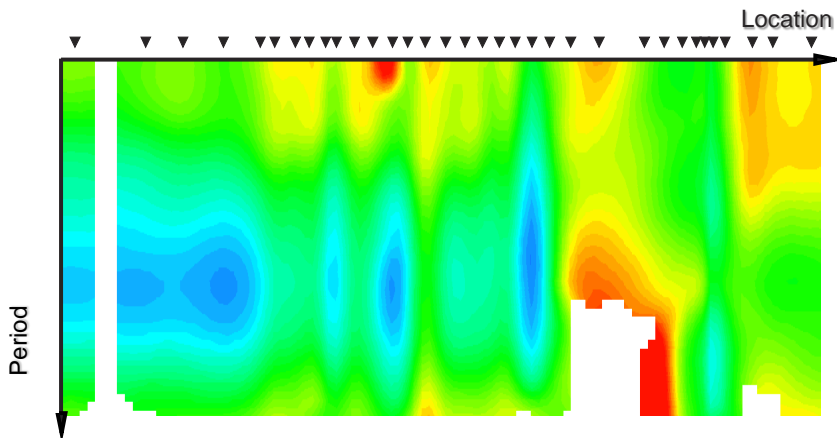
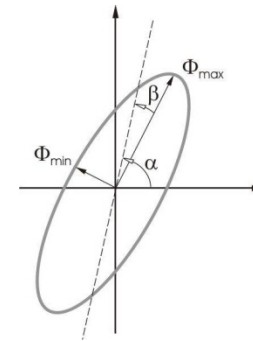
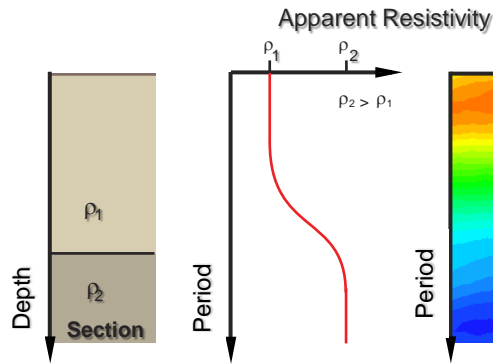


- Record a time series – electric (E) and magnetic (H) fields.
- Convert to frequency dependent apparent resistivity and phase (Ex and Hy; Ey and Hx).
- Combine data from multiple stations.



Magnetotellurics

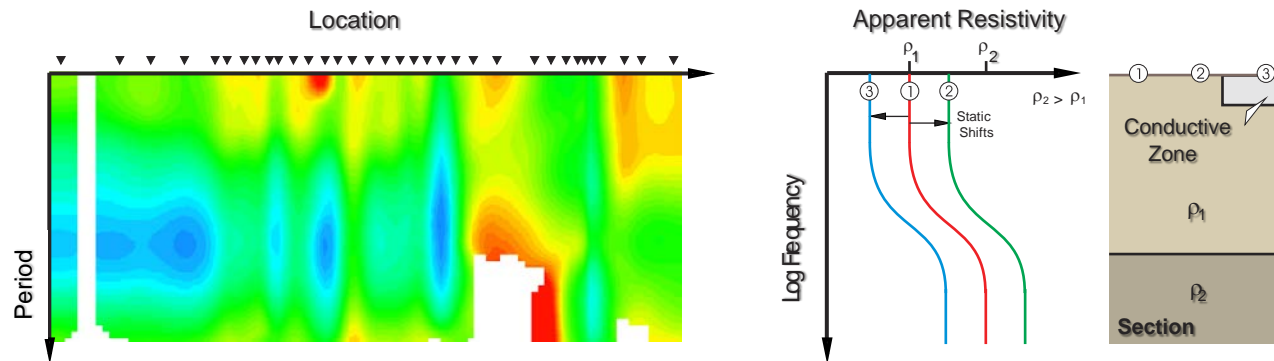
- Stn data used to create pseudo, para and cross sections.
- Dimensionality, strike direction crucial for 2D modelling.



Magnetotellurics



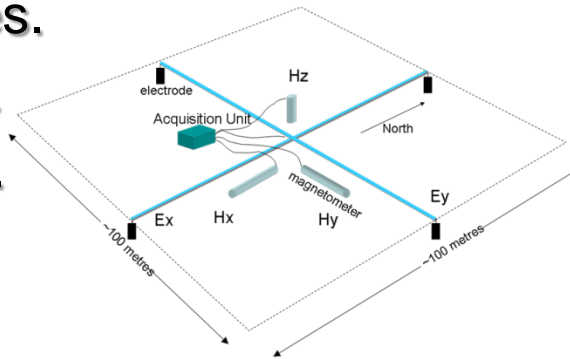
- Station data are used to create pseudo, para and cross sections.
- Static effects.
 - Conductivity variations in the near surface.
- Modelling \Rightarrow sub-surface electrical conductivity distribution.
 - Forward modelling (Model \Rightarrow data) – manual.
 - Inverse modelling (Data \Rightarrow model) – semi-automated.
 - 2D routine, 3D now generally available.



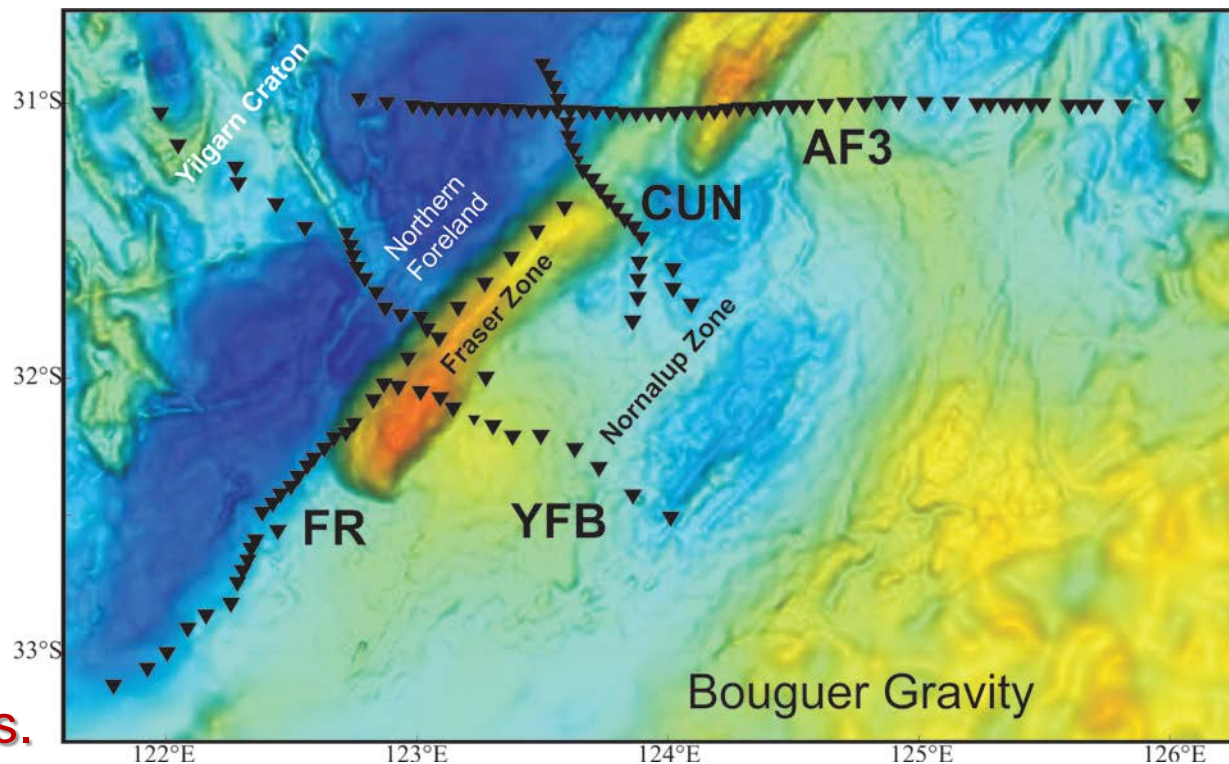
MT Deployment



- **Broadband MT.**
 - 100 m electric dipoles.
 - Hx-y-z B field (coils).
 - 5-20 km stn spacing.
 - ~40 hrs recording.
- **(Long period MT.)**
 - 50 m electric dipoles.
 - Hx-y-z B field (magnetometers).
 - 20-50 km stn spacing.
- **Time-domain EM.**
 - Soundings to measure static shift.

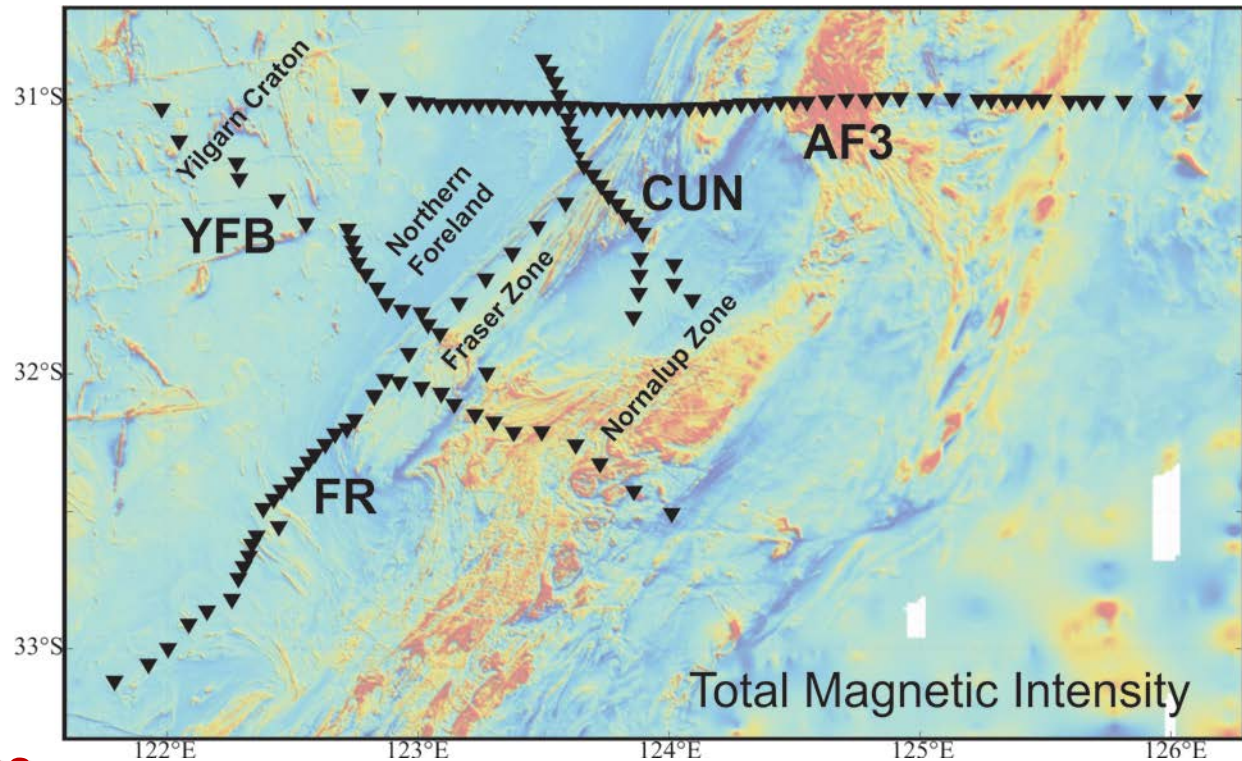


Fraser MT Deployment



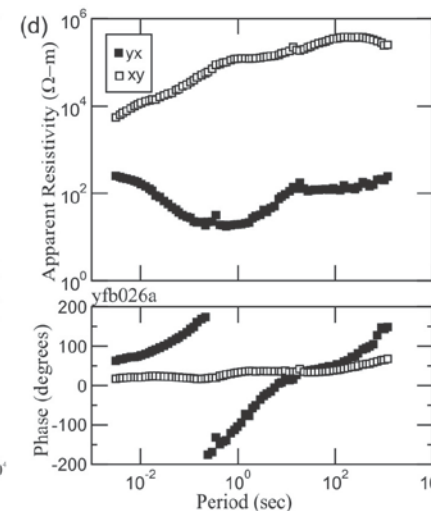
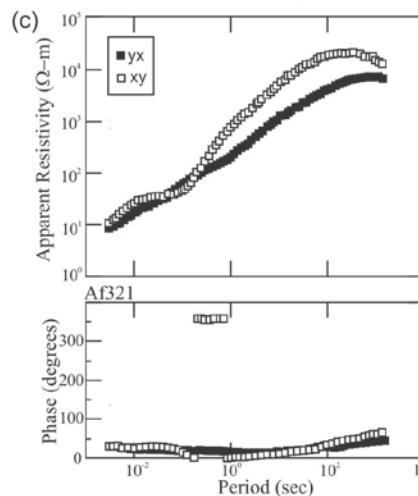
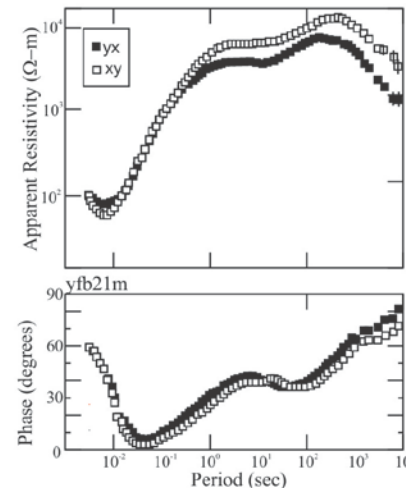
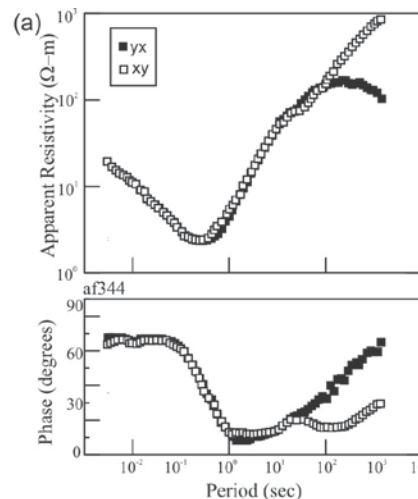
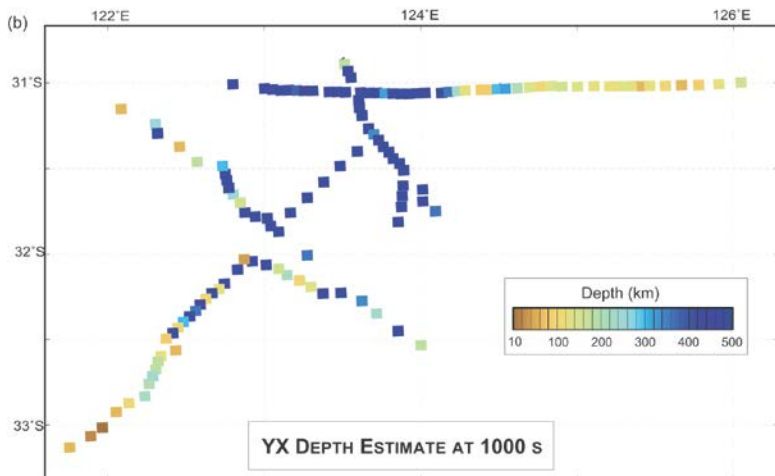
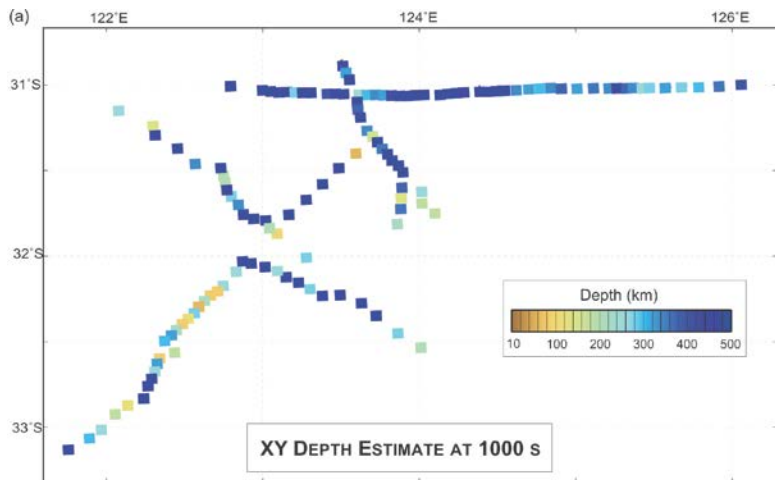
- **4 regional profiles.**
 - AF3 – coincident with the seismic line.
 - YFB – based on earlier transect.
 - FR – strike-profile, crosses SW edge of the Fraser Complex.
 - CUN – completes network.

Fraser MT Deployment



- 4 regional profiles.
 - Three strike profiles.
 - Along with FR profile allow along-strike variations in structure to be detected.
- T1 - Tropicana

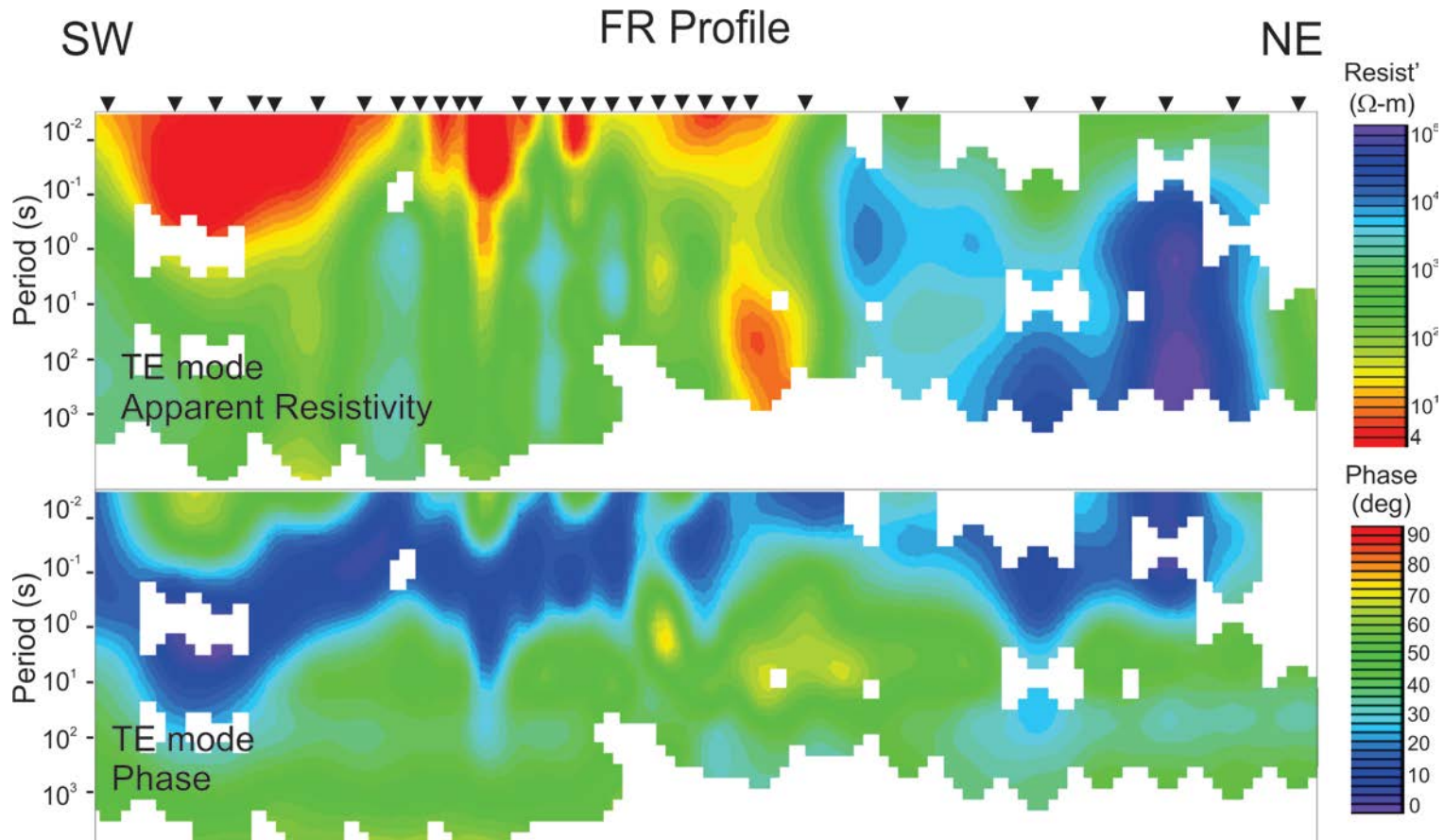
Depth Penetration (estimates)



Processing and Modelling



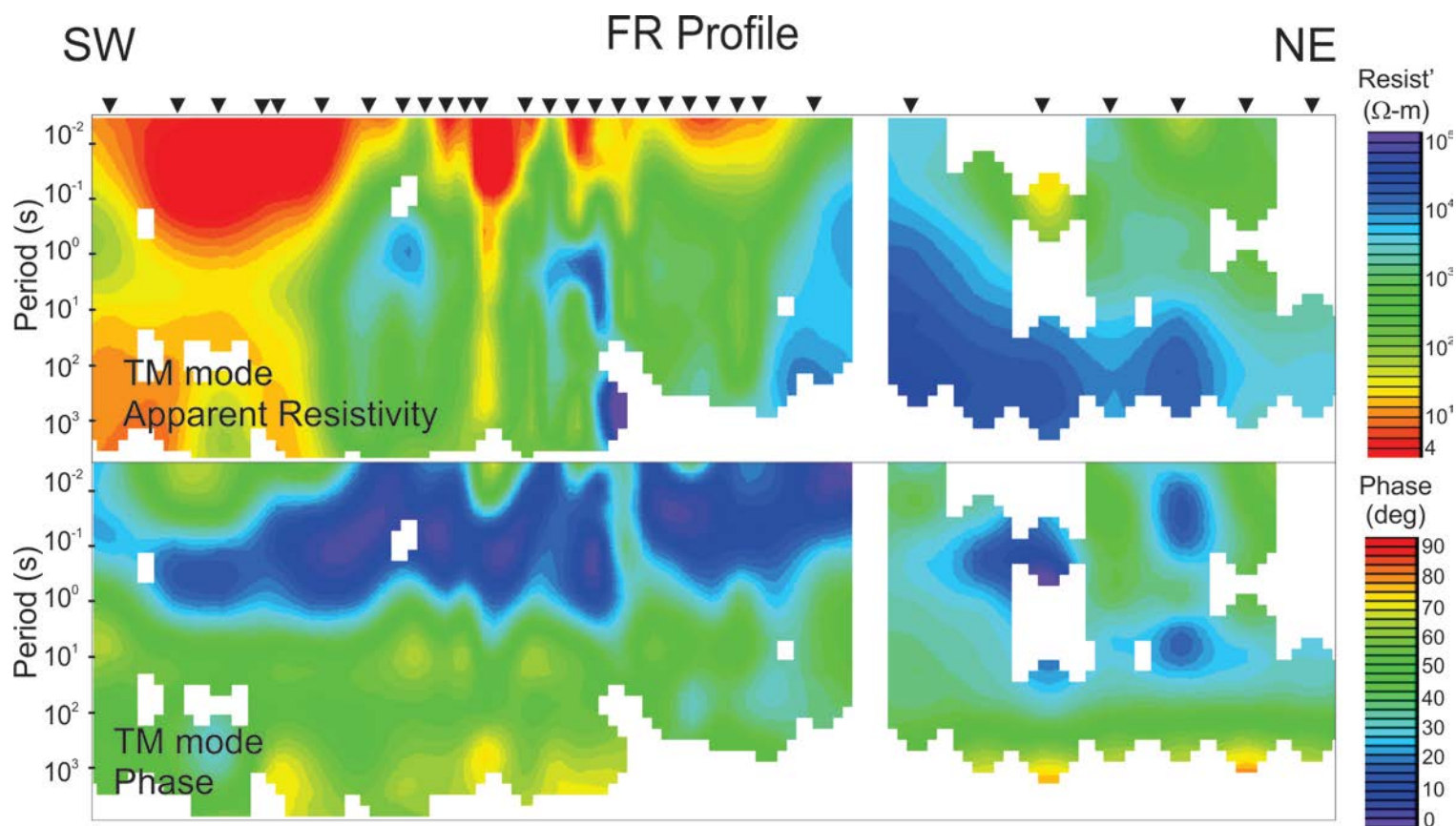
- Fraser profile as an example – pseudosections.



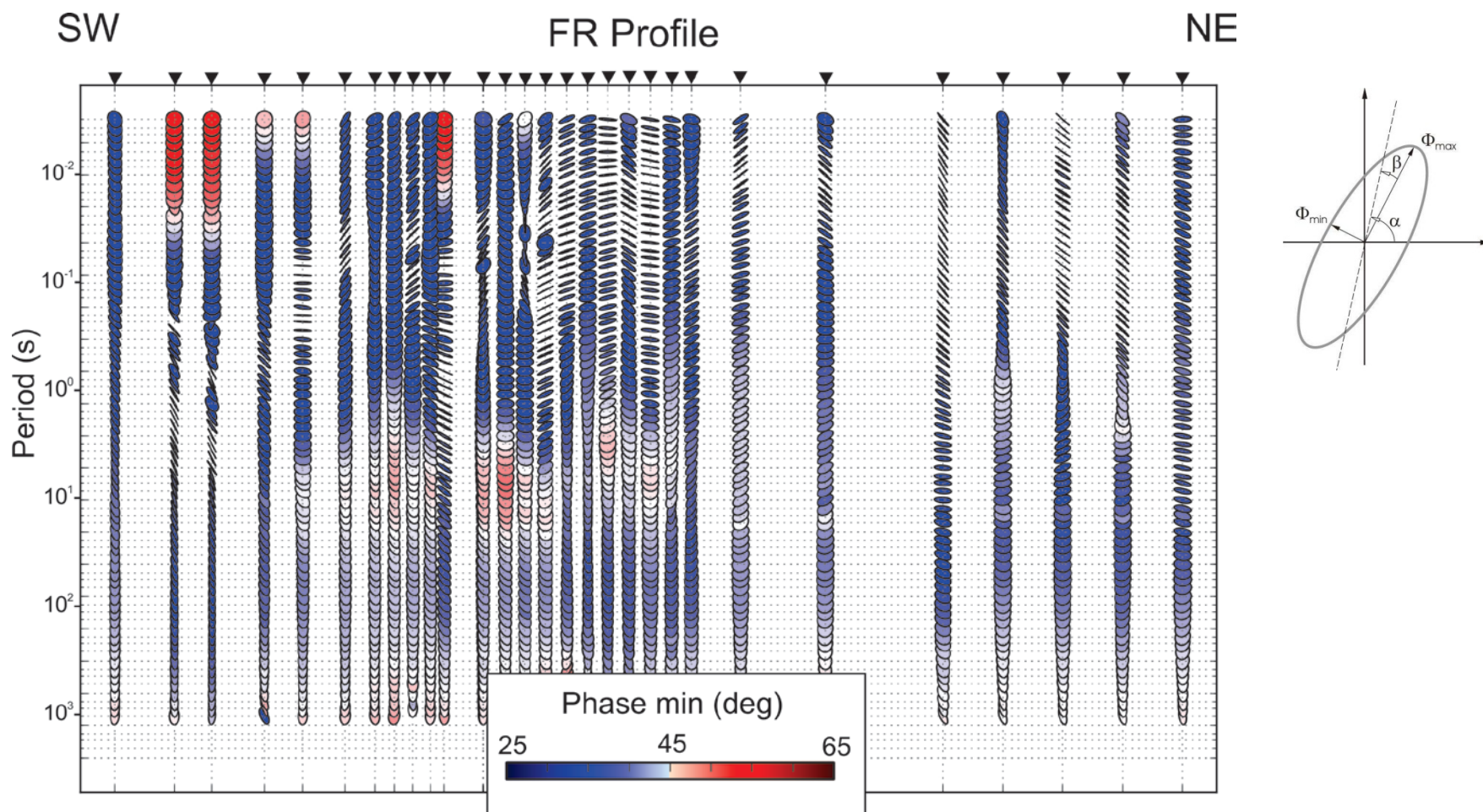
Processing and Modelling



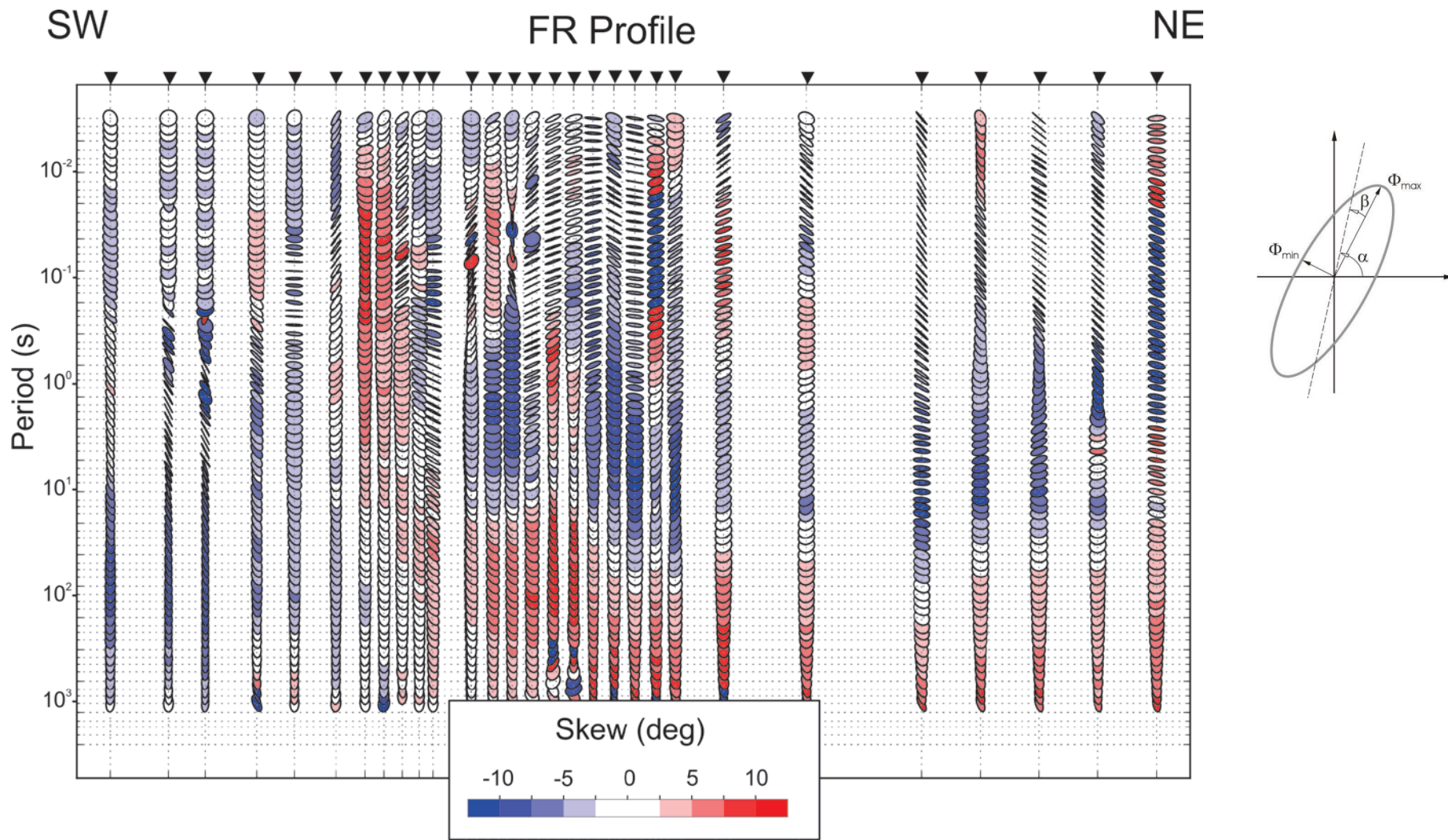
- Fraser profile as an example – pseudosections.



Electrical Strike and Dimensionality



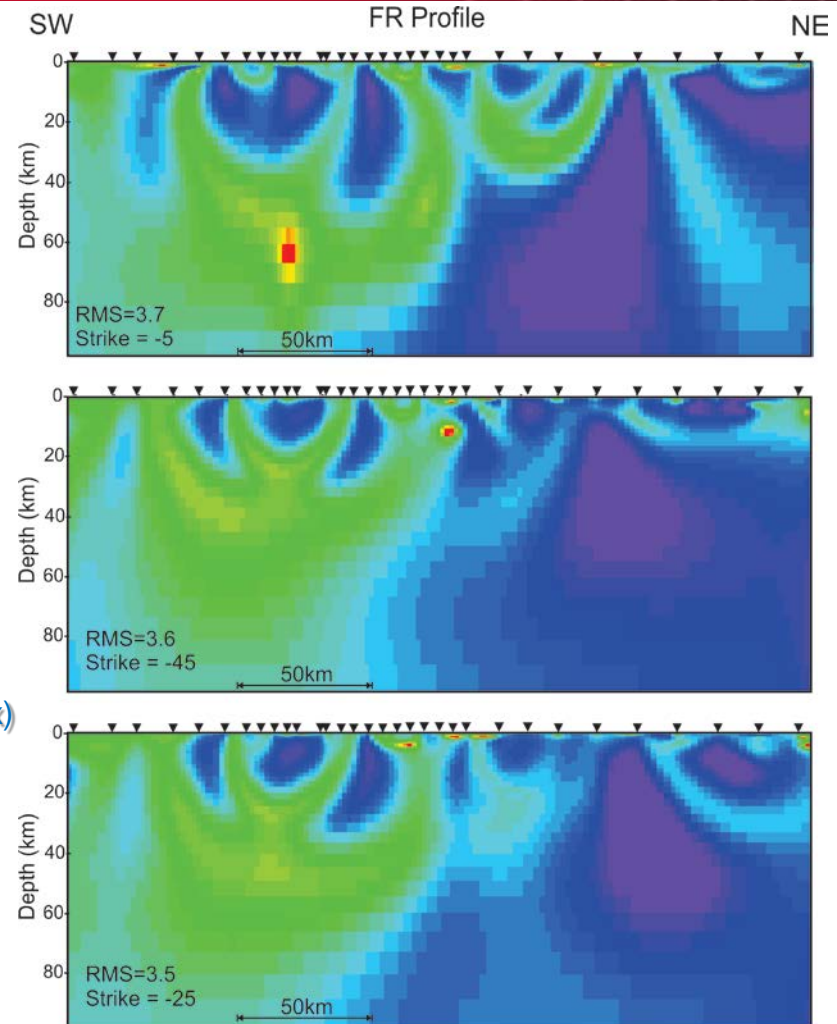
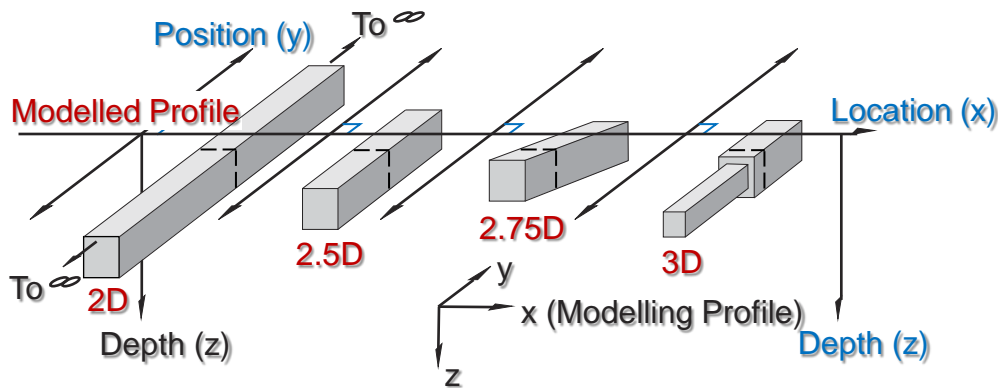
Electrical Strike and Dimensionality



Strike Variation



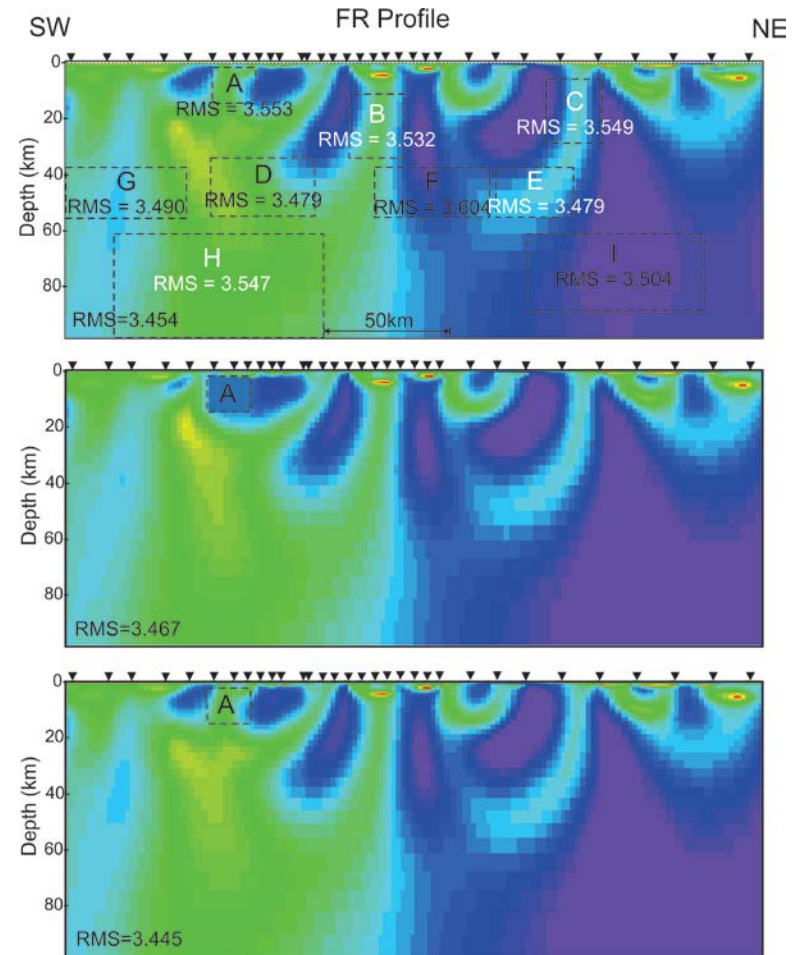
- Inverse modelling: Winglink package.
 - Have to discard ‘3D’ responses.
 - Strike direction is a critical variable.
 - Geoelectric strike is period and spatially variable.



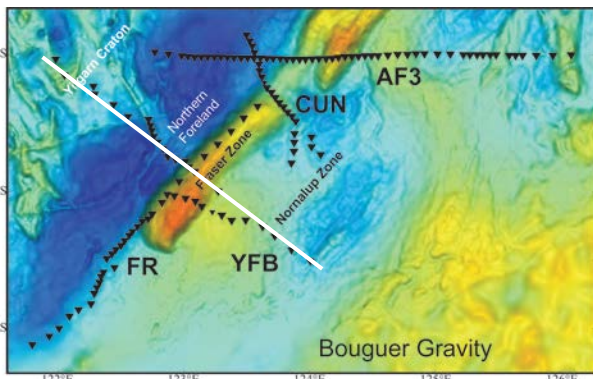
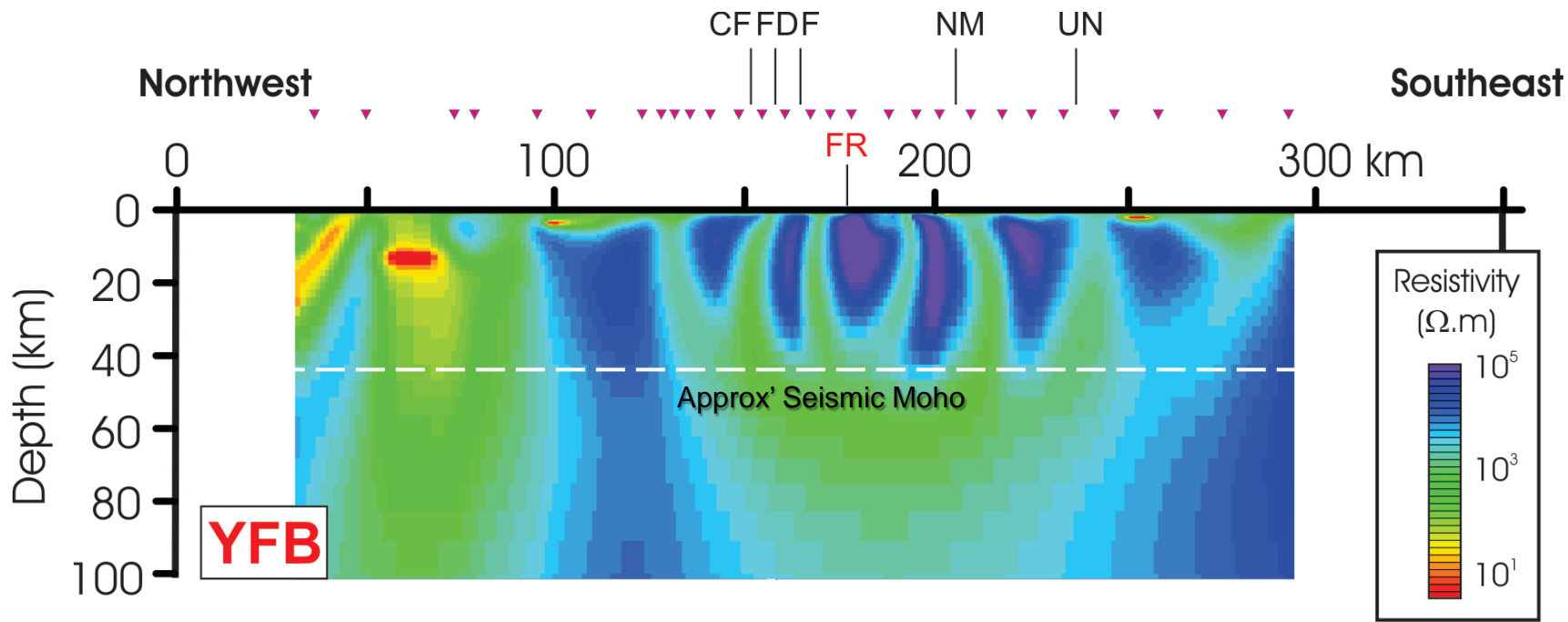
Feature Testing



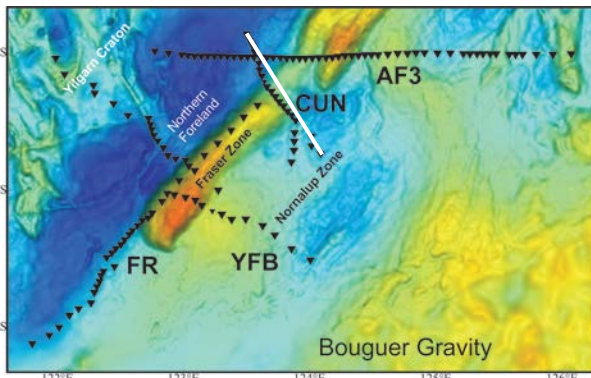
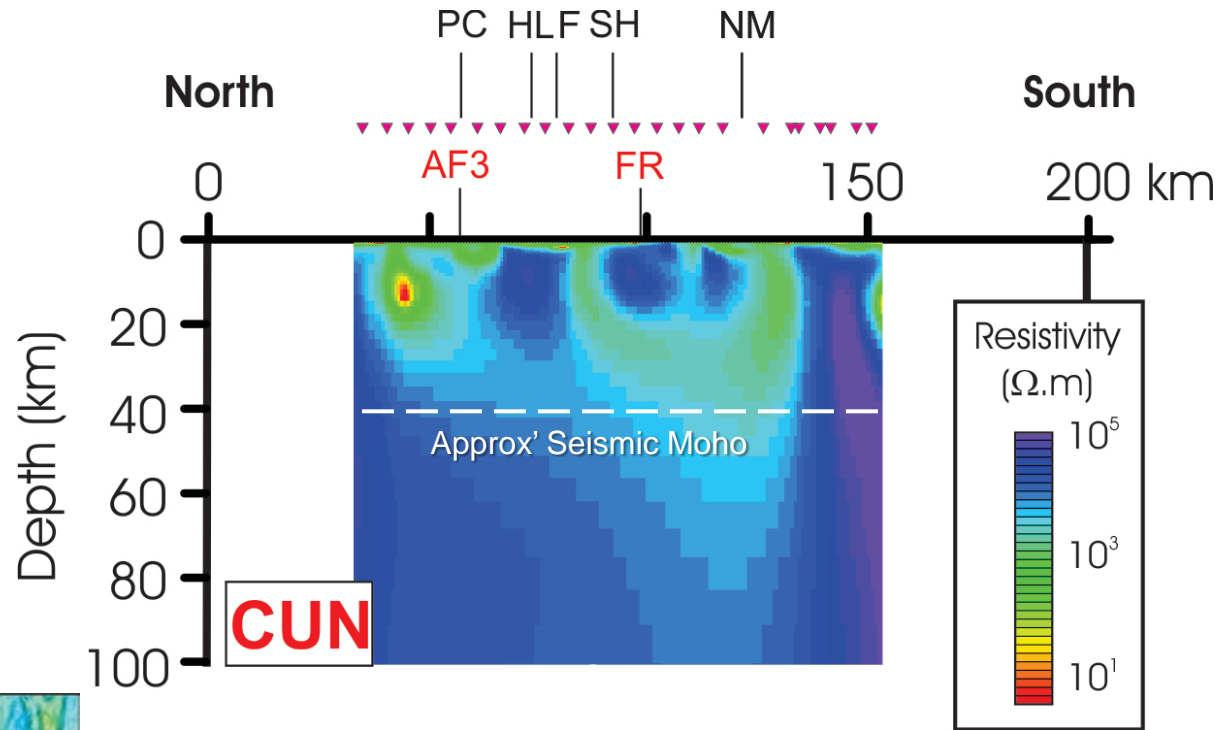
- Systematically test to see whether some feature in the model is 'needed'.
 - Freeze the feature.
 - Remove the feature.
 - Compare the RMS fit to the data.



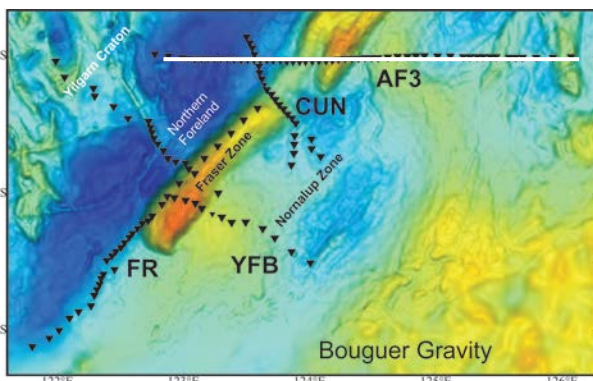
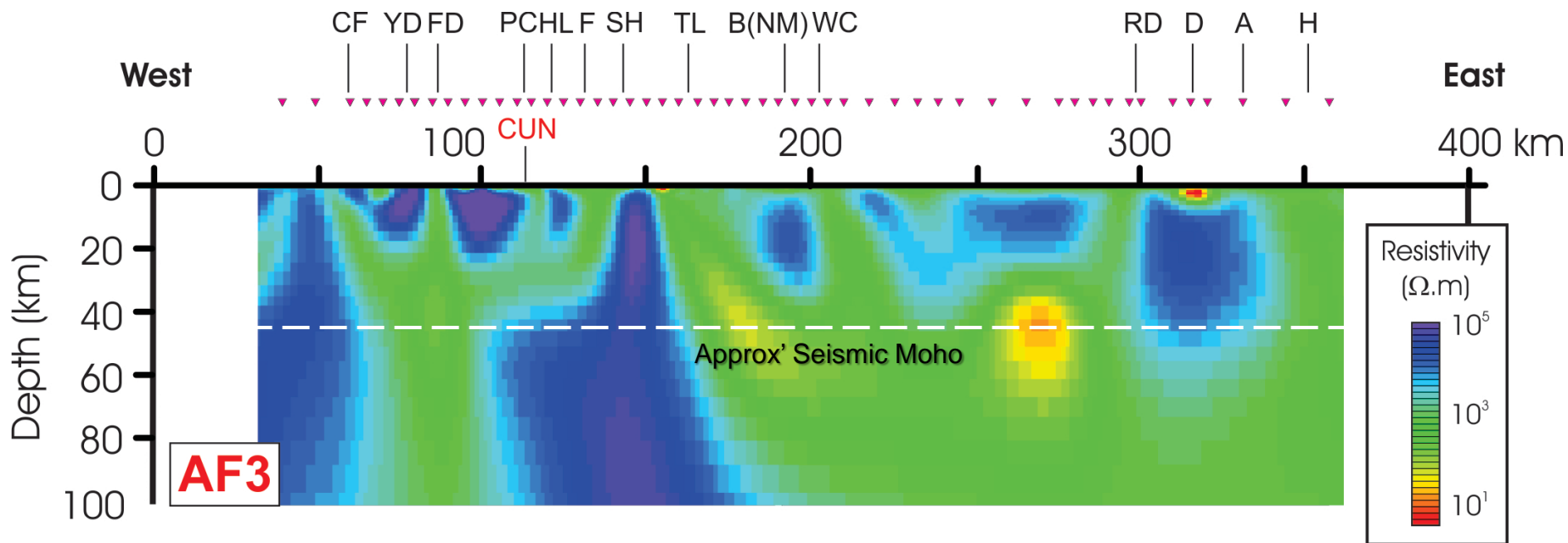
2D Results - YFB



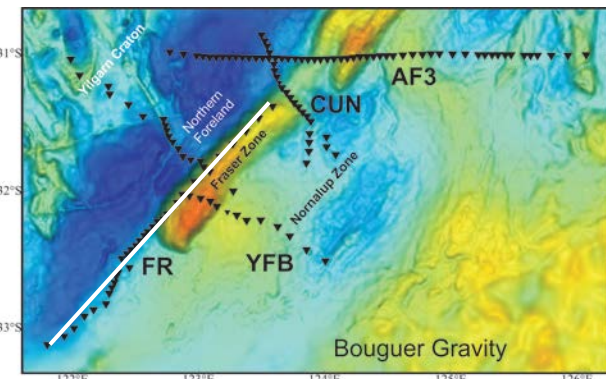
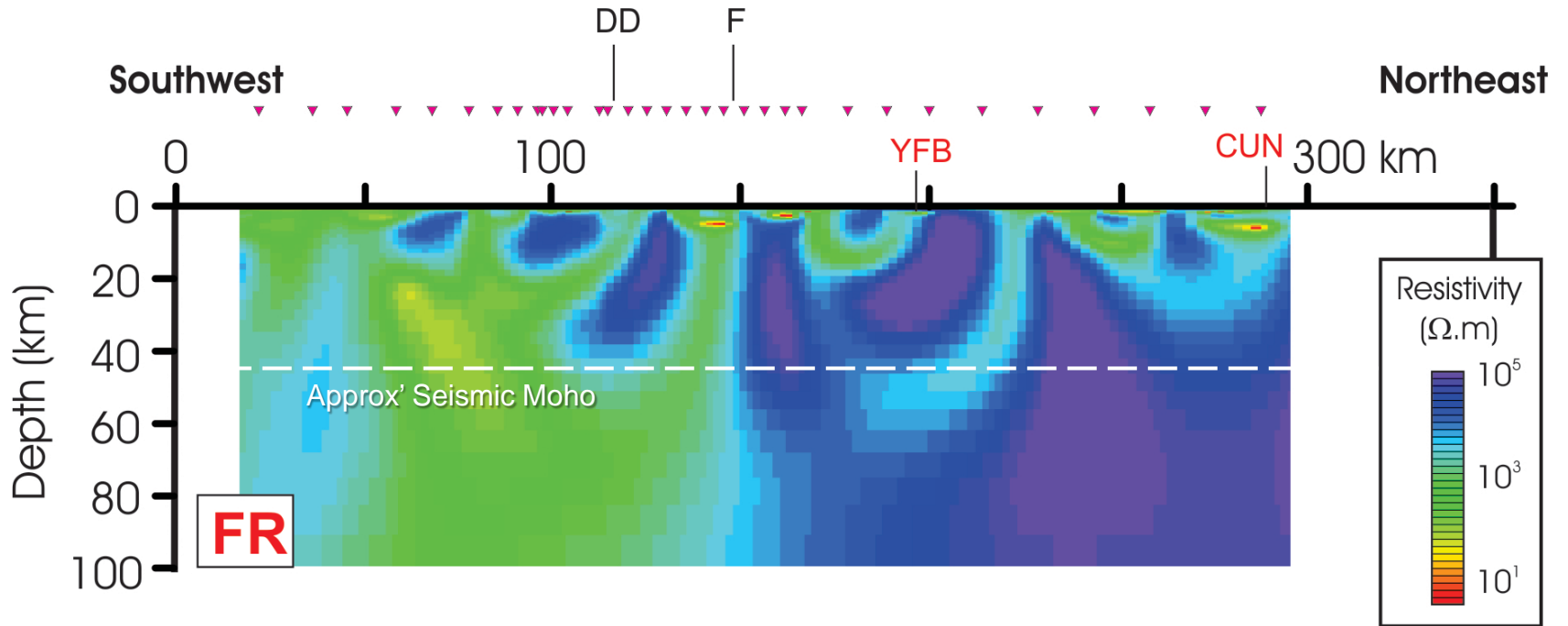
2D Results - CUN

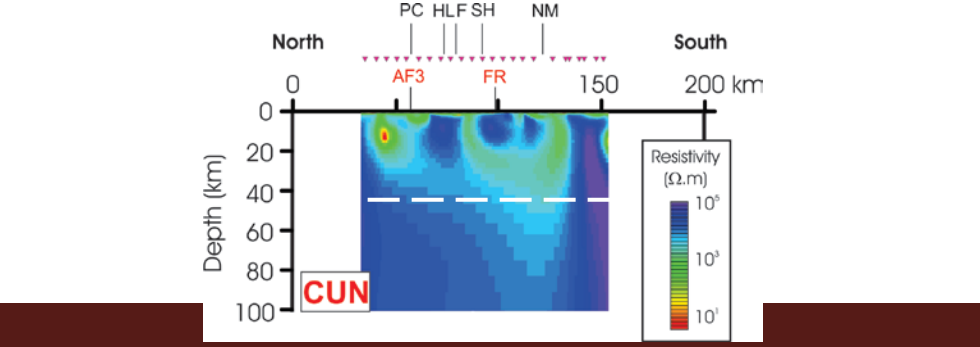
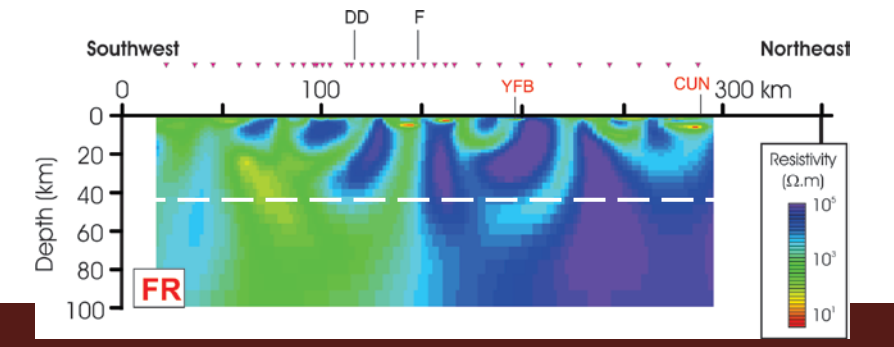
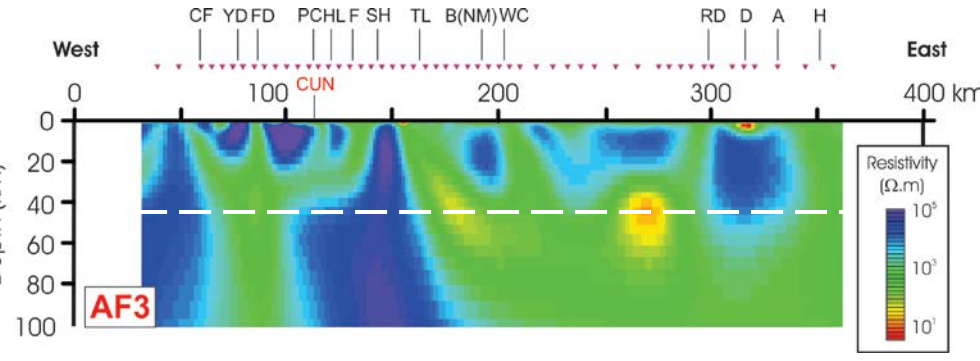
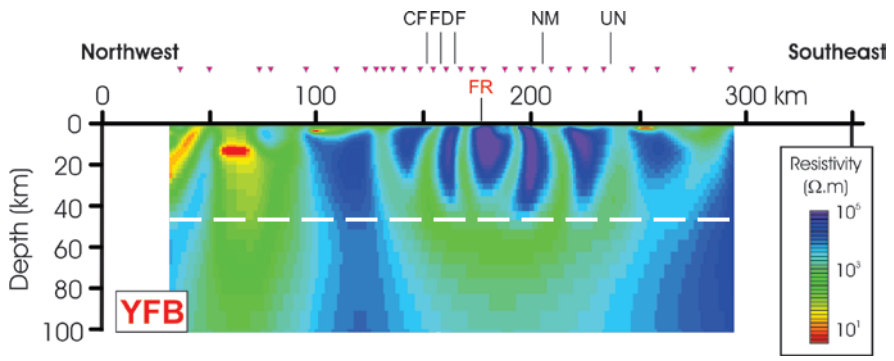
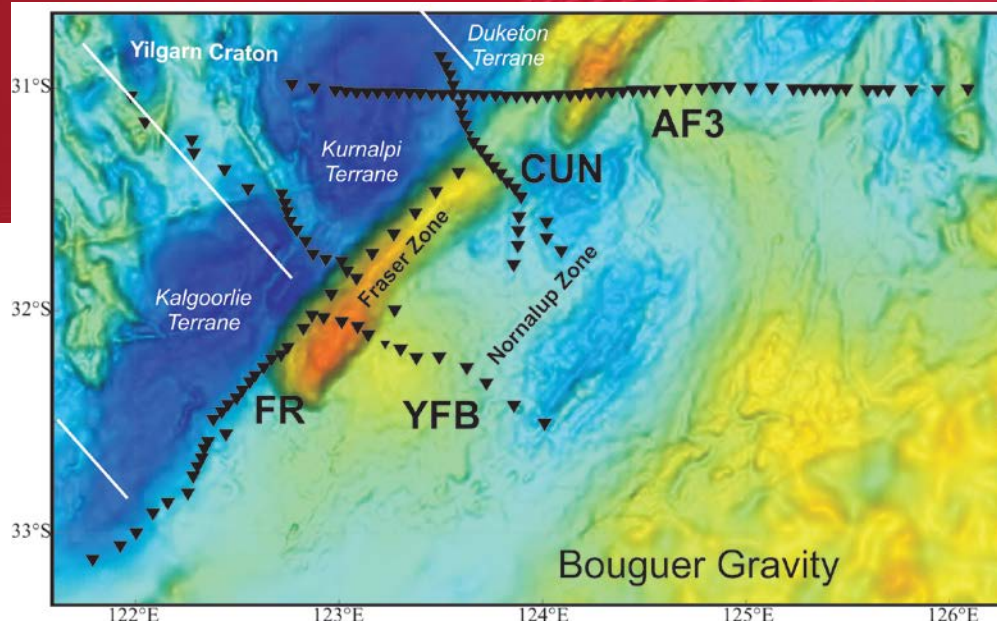


2D Results – AF3



2D Results - FR

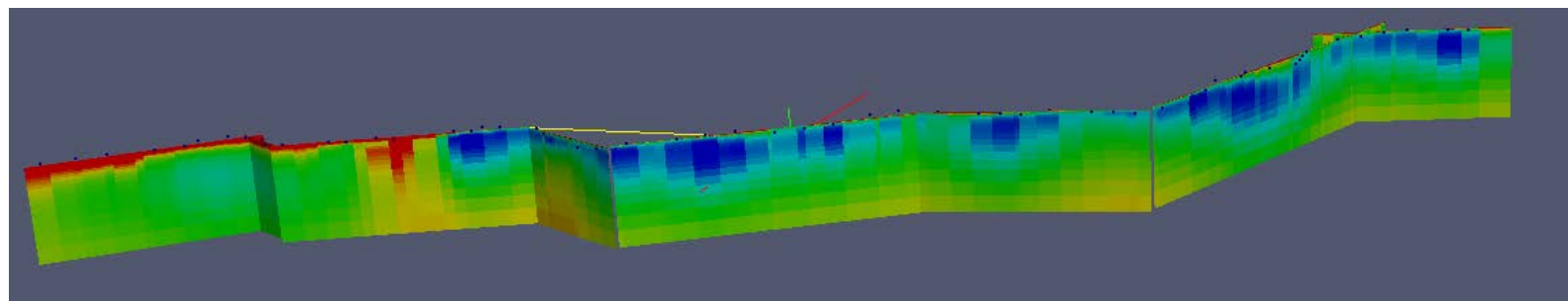
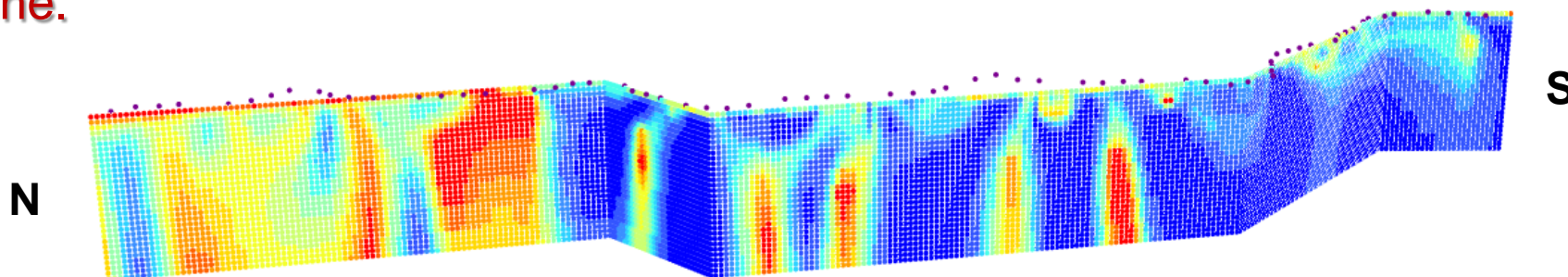




Results so far



- Even by Western Australian standards the Fraser survey is highly '3D'.
- Experience, for example in the Capricorn Orogen has shown significant improvements when modelling in 3D.
 - Time consuming, and requires the iVec super computer.
- A similar story seems to apply to data from the Fraser area – Tropicana line.



Results so far

- Map many ‘conductive’ features in resistive background – faults?
- Conductivity of the lower crust is variably conductive, as is the upper mantle.
- Are we seeing Archean features that continue under the Fraser Orogen?
- 3D modelling to come ...

