

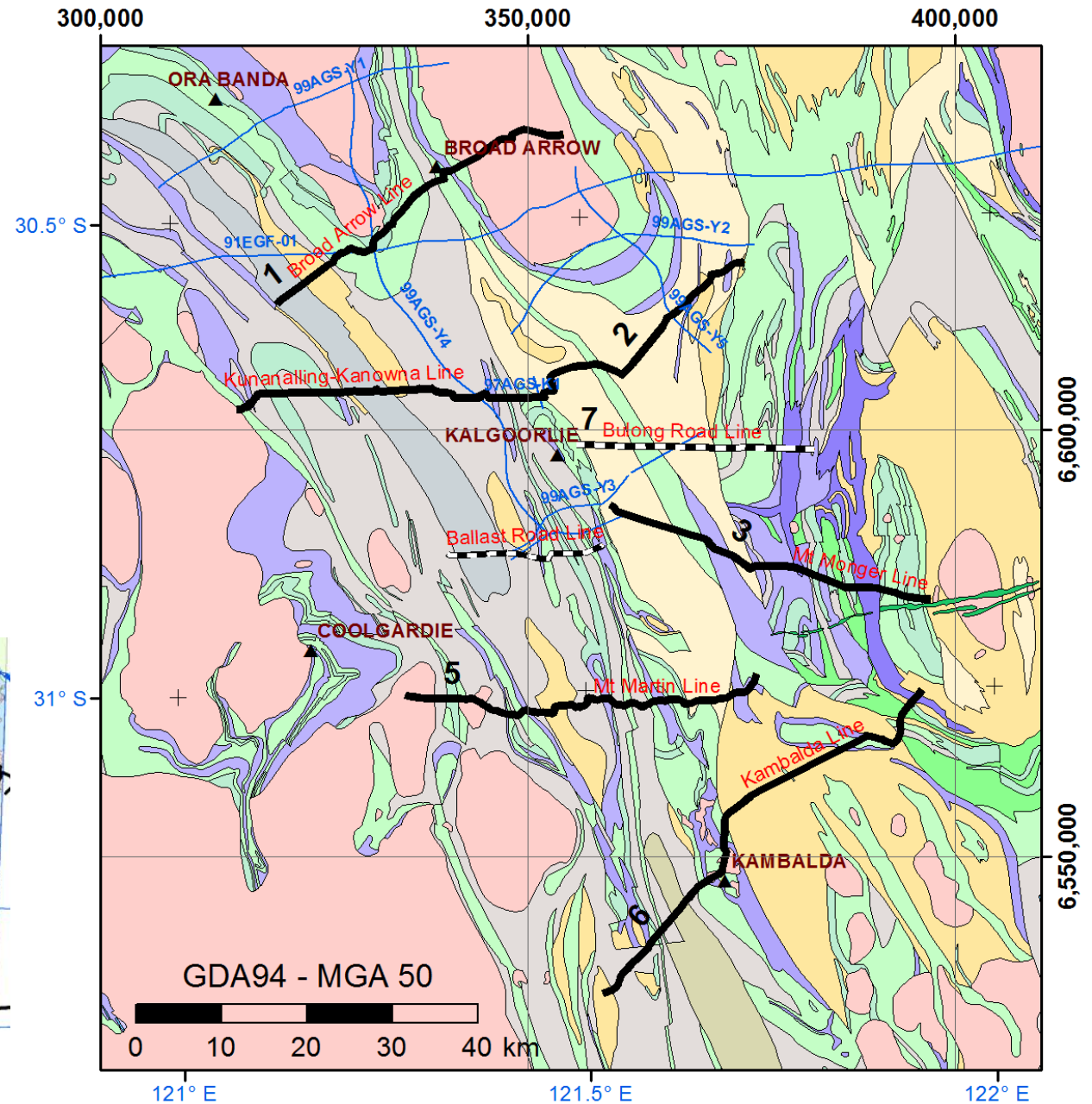


Eastern Goldfields 2019 High-Resolution 2D Reflection Seismic Survey



David Howard

- Five to seven traverses
- 250 to 300 line-km
- Mobilisation: 20–28 Feb
- Acquisition: Mar–Apr
- Processing: May–Jun
- Interp: Jul–Aug
- Release: Q3/19

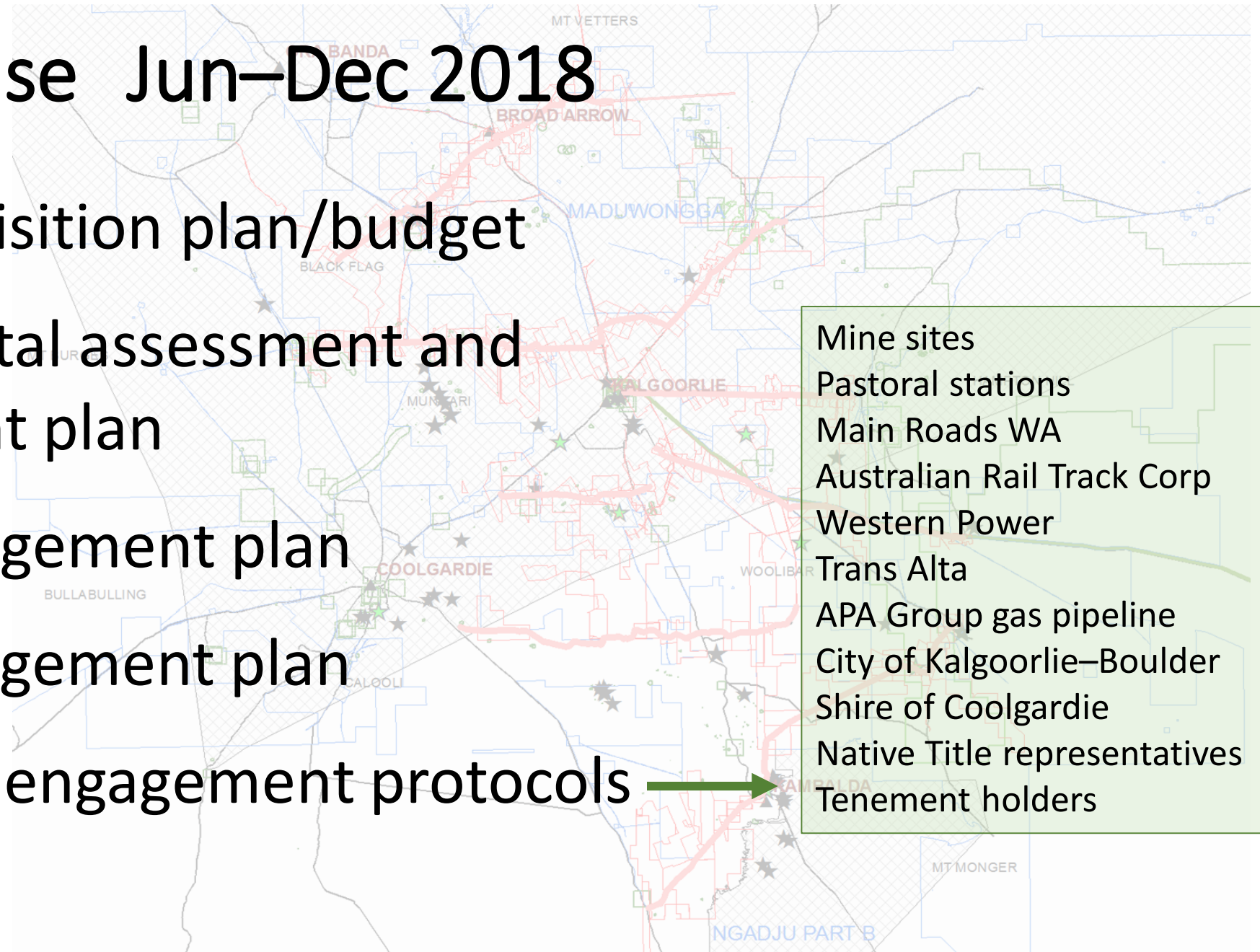


Planning and preparation

- Sep 2017 Concept adopted (after HiSeis)
- Dec '17 – Feb '18 Public tender
- May 2018 Preferred respondent selected
- Jun–Dec 2018 Phase 1 survey planning and access
- Dec 2018 Contract issued (Velseis)

Planning phase Jun–Dec 2018

- Survey acquisition plan/budget
- Environmental assessment and management plan
- Safety management plan
- Traffic management plan
- Stakeholder engagement protocols

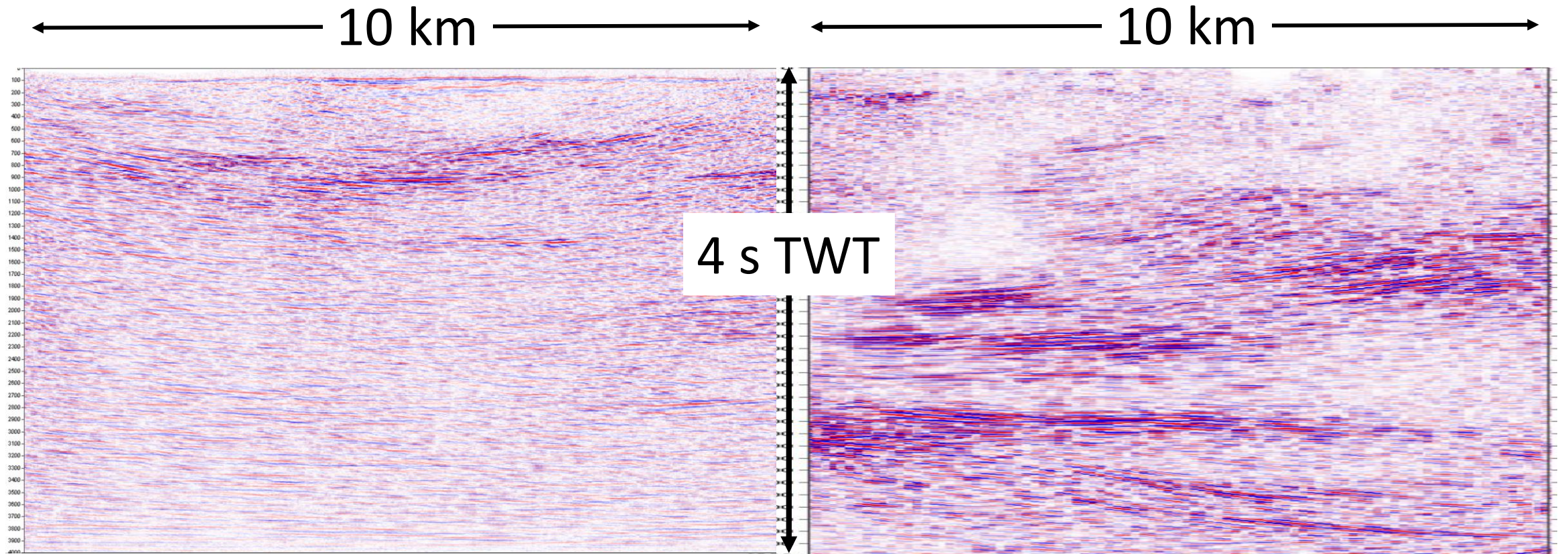


- Mine sites
- Pastoral stations
- Main Roads WA
- Australian Rail Track Corp
- Western Power
- Trans Alta
- APA Group gas pipeline
- City of Kalgoorlie–Boulder
- Shire of Coolgardie
- Native Title representatives
- Tenement holders

Survey parameters

| | |
|-------------------------|---|
| Energy source | 1 or 2 x AHV-IV 380 Renegade 80,000 lb peak force |
| VP interval | 20 m |
| No. of sweeps | One |
| Sweep length | 14–6 s + 4 s listen (to be confirmed by testing) |
| | |
| Geophones | Sensor RTC 10 Hz, 3 phones in-line, 2 m spacing |
| Group interval | 10 m |
| Spread | 12,000 m (6,000 m each side of VP) |
| | |
| Recording system | Sercel Unite Cable-less |
| Channels | 1,200 live (3,000 working) |
| Nominal full fold | 300 |

Expected resolution



20 m VP x 10 m receiver

2019 EG configuration

80 m VP x 40 m receiver

GA 1999 Line 99AGSY3

Survey objective

Structural information in a depth range from about 300 m to 5000 m to complement information from other sources, and to delineate areas that might be suitable for 3D seismic surveys for mineral exploration and targeting.

Field liaison: Melissa Drummond

Data quality control: Sara Jakica

Geology/interpretation: Ivan Zibra Sara Jakica
Hugh Smithies Klaus Gessner

Project administration: David Howard