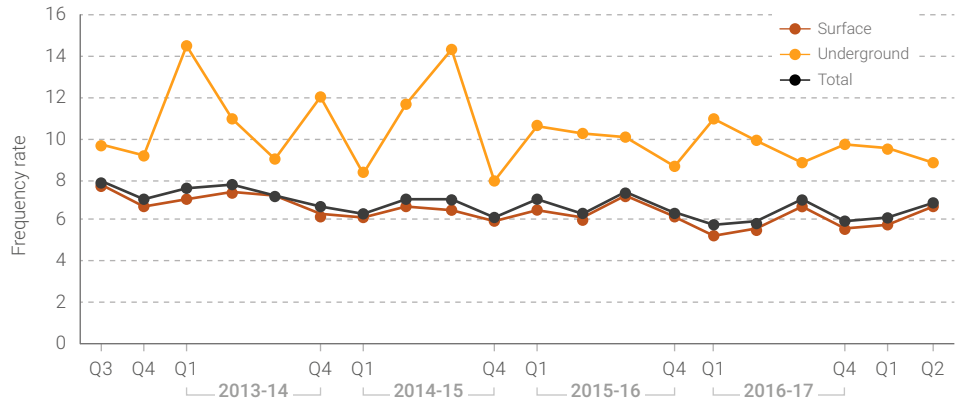




### Injury frequency rate (number of injuries per million hours worked)

Last quarter, the overall total injuries increased by 13%.

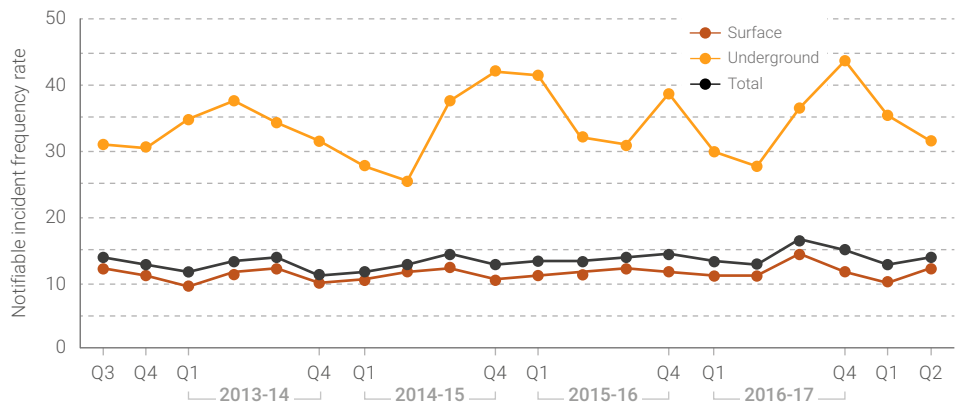
Make sure you can recognise the hazards associated with your workplace and the work you do, understand the risks, and know how to implement the control measures.



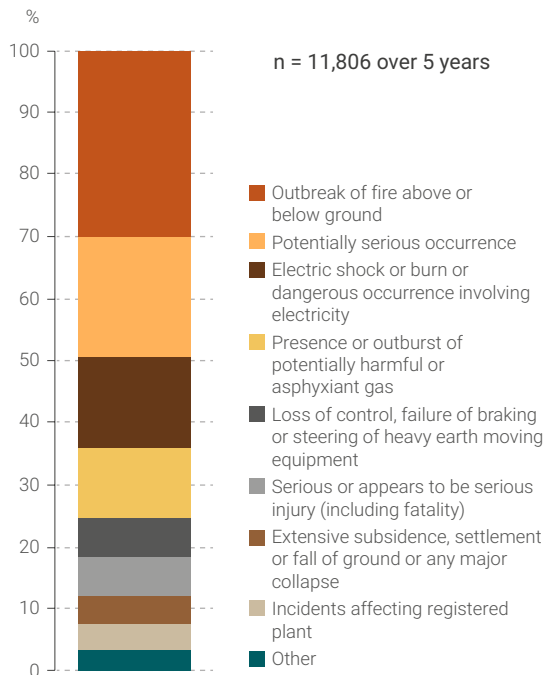
### Notifiable incidents frequency rate (number of incidents per million hours worked)

Specific types of incidents, including near misses, are required to be reported to the Department. This reporting is important to identify trends and clusters of incidents that need to be addressed to help prevent injuries.

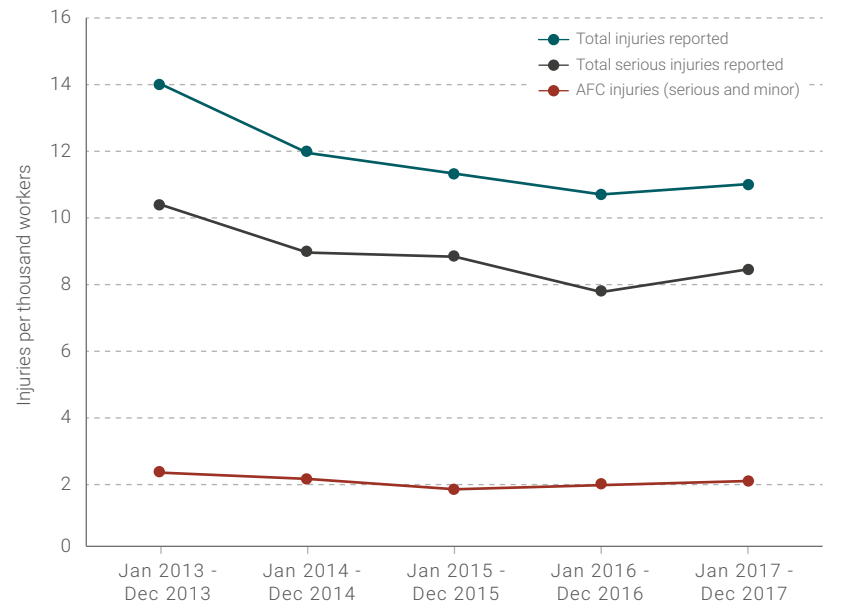
What is the reporting culture like at your site?



### Notifiable incidents by reporting category



### High-consequence serious injuries (amputations, fractures and crushing)



For further information, see *Analysis of serious injury data in the Western Australian mining industry July-December 2013*