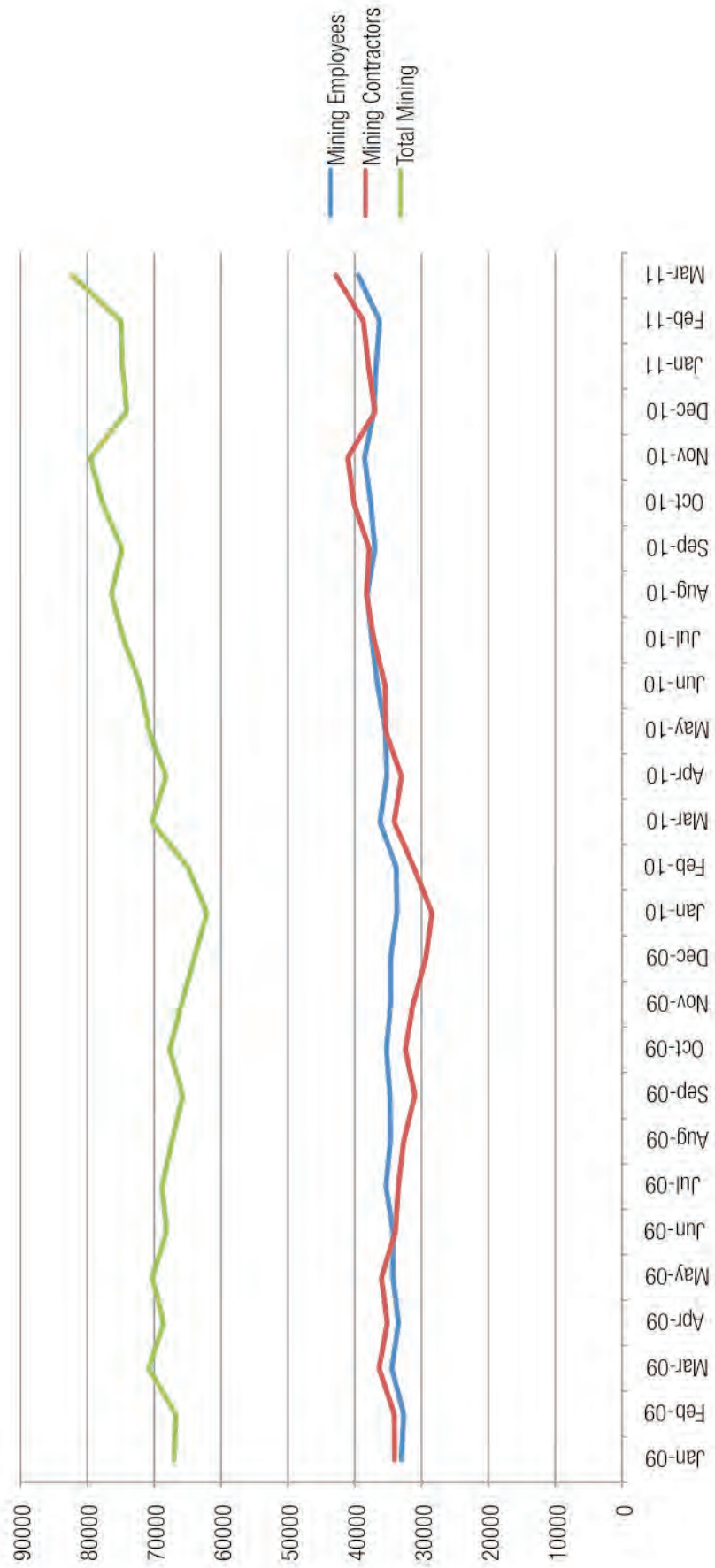


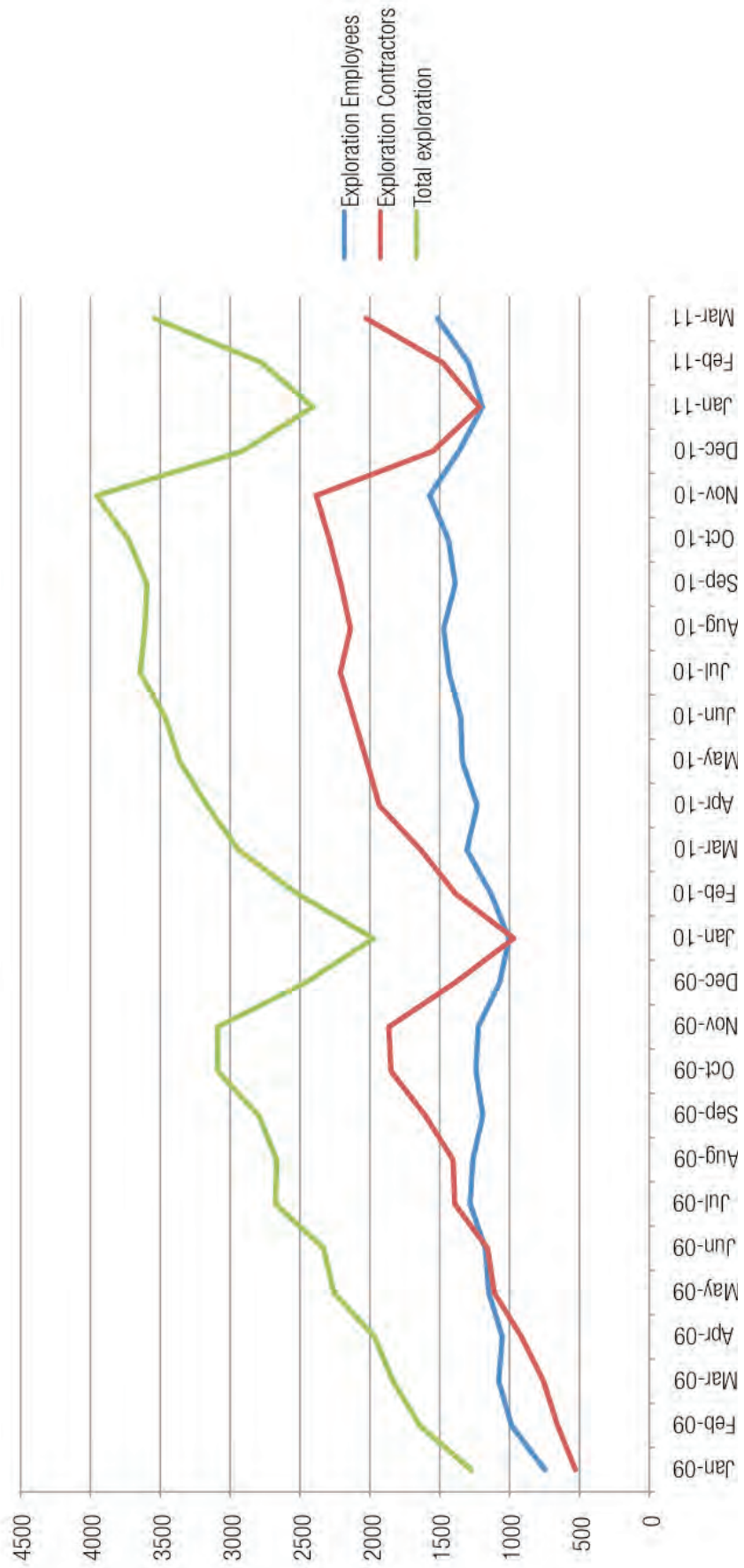
NOTE: From 1 July 2009, monthly mining workforce figures are plotted as full-time equivalent (FTE), where 1 FTE = 2,000 hours worked per year

MONTHLY MINING WORKFORCE



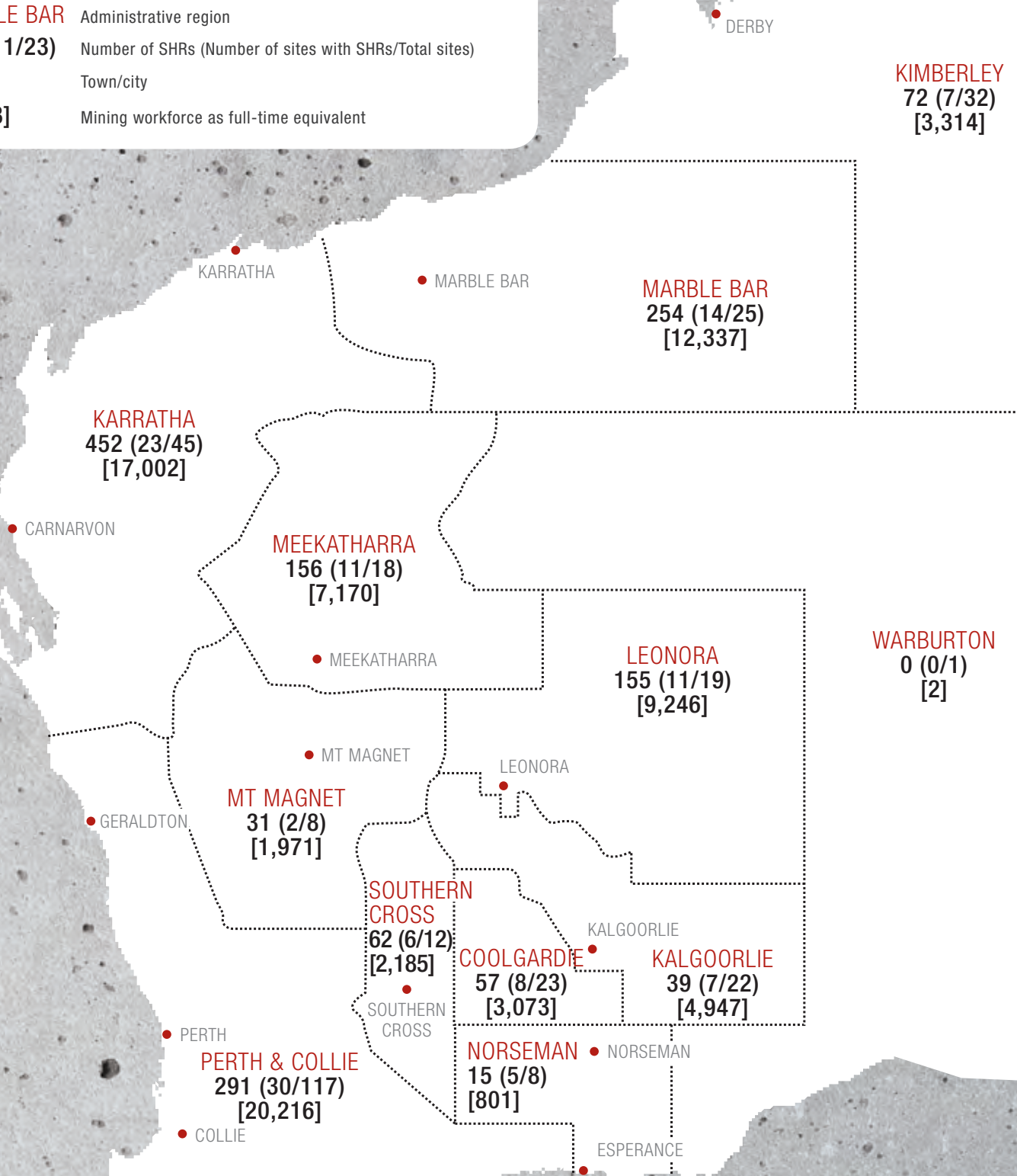
NOTE: From 1 July 2009, monthly mining workforce figures are plotted as full-time equivalent (FTE), where 1 FTE = 2,000 hours worked per year

MONTHLY EXPLORATION WORKFORCE



DISTRIBUTION OF SAFETY AND HEALTH REPRESENTATIVES AS AT 30 MARCH 2011

- Mining registrars administrative boundary
- MARBLE BAR** Administrative region
- 153 (11/23)** Number of SHRs (Number of sites with SHRs/Total sites)
- Town/city
- [9,578]** Mining workforce as full-time equivalent



Total active (incl. C&M) mine sites = 330
 Mine sites with SHRs = 124
 Total SHRs = 1,770
 SHRs attached to mine sites = 1,584
 Others (e.g. exploration) = 186