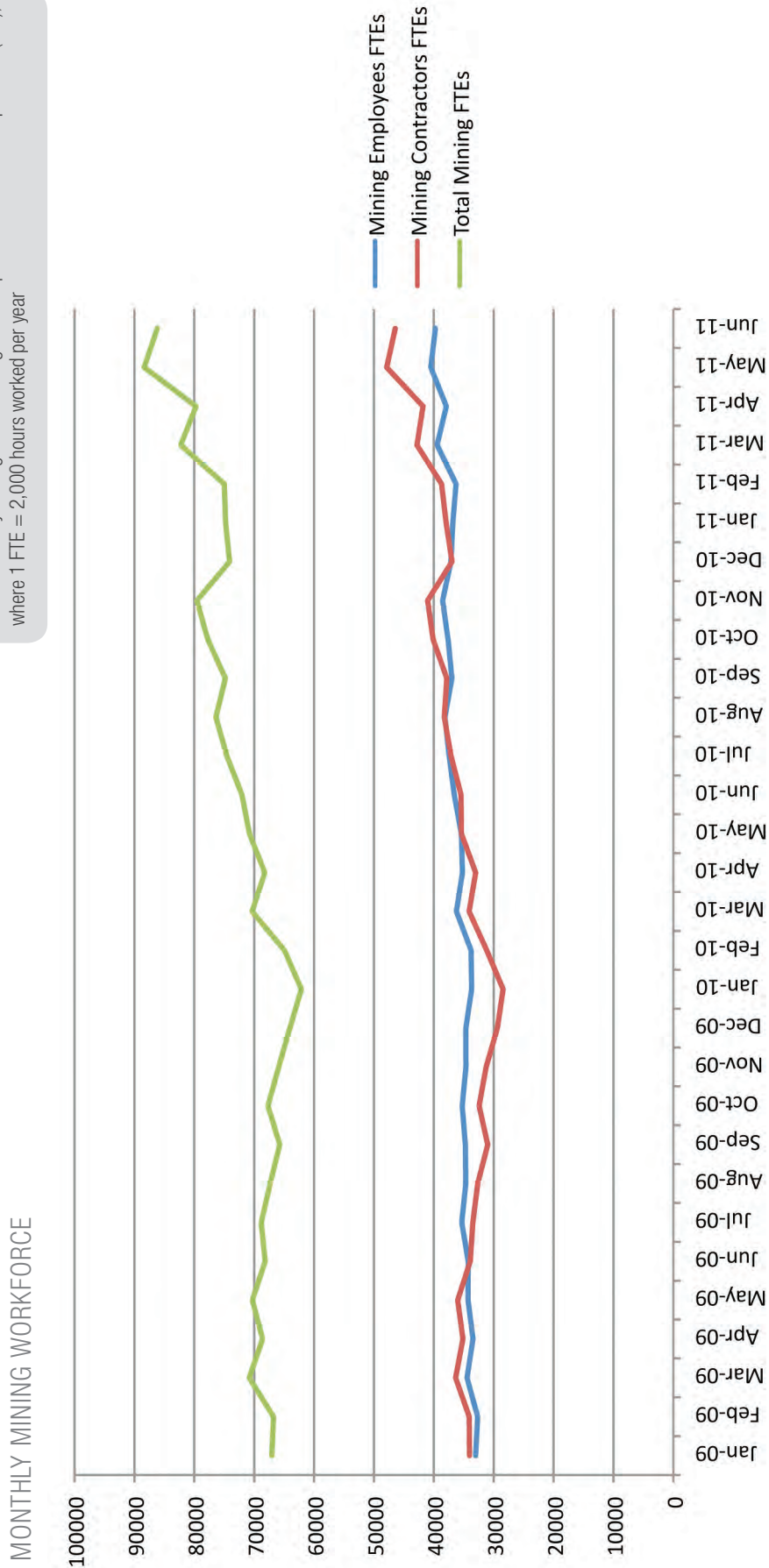
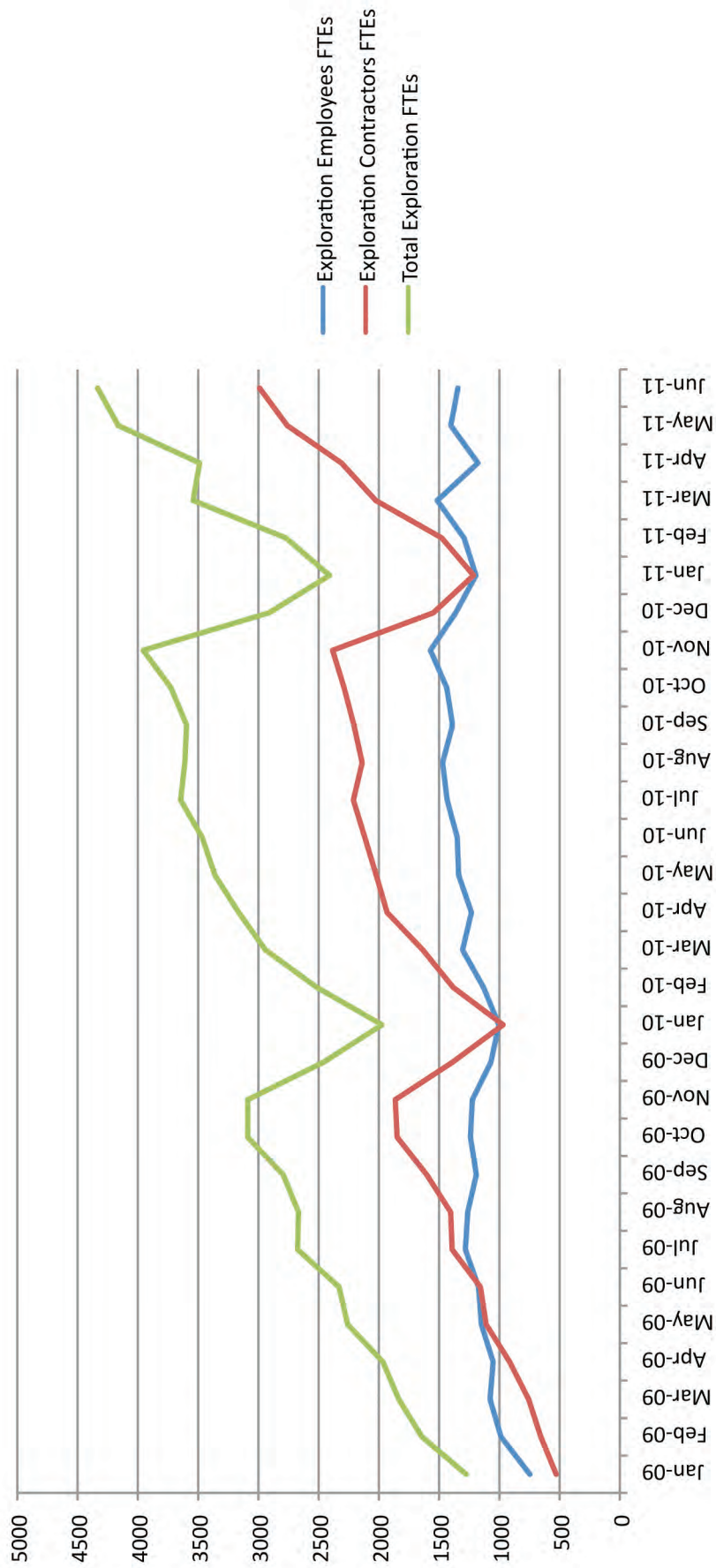


NOTE: Monthly mining workforce figures are plotted as full-time equivalent (FTE), where 1 FTE = 2,000 hours worked per year



NOTE: Monthly exploration workforce figures are plotted as full-time equivalent (FTE), where 1 FTE = 2,000 hours worked per year

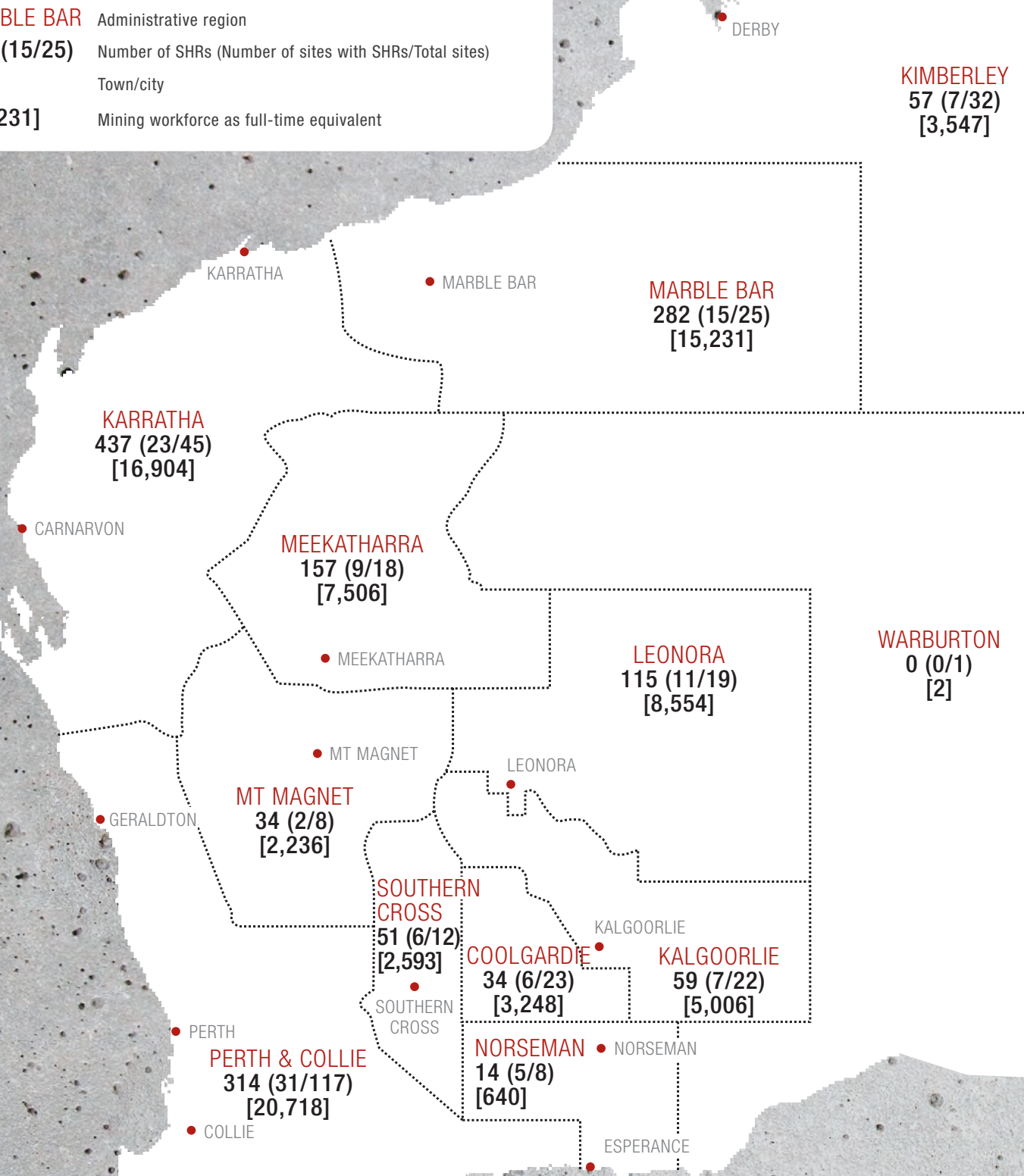
MONTHLY EXPLORATION WORKFORCE



CRUNCHING THE NUMBERS

DISTRIBUTION OF SAFETY AND HEALTH REPRESENTATIVES AS AT 30 JUNE 2011

- Mining registrars administrative boundary
- MARBLE BAR** Administrative region
- 282 (15/25)** Number of SHRs (Number of sites with SHRs/Total sites)
- Town/city
- [15,231]** Mining workforce as full-time equivalent



Total active (incl. C&M) mine sites = 330
 Mine sites with SHRs = 122
 Total SHRs = 1,760
 SHRs attached to mine sites = 1,554
 Others (e.g. exploration) = 206