

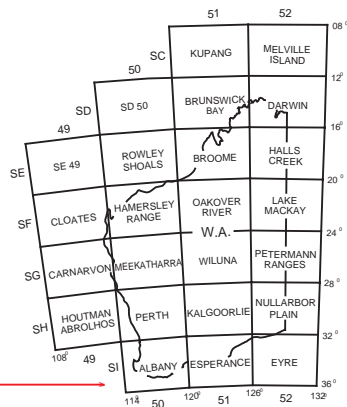
1:1 000 000 GRATICULAR SECTION INDEX MAP SHOWING GRATICULAR SECTIONS AND INDEX PLAN COVERAGE

Petroleum Title Graticular Sections are based on AGD66

Example :- Albany (1:1 Million Graticular Section Index Map - Offshore Series) 2556

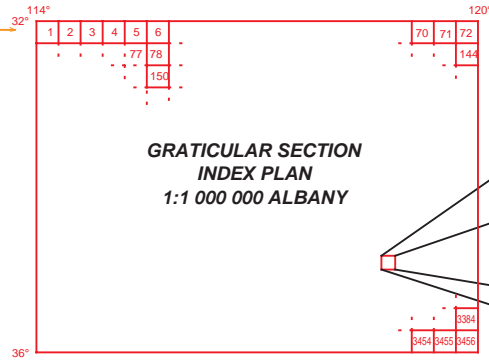
(1) This refers to the
1:1 000 000 INDEX MAP

INDEX TO OFFSHORE 1: 1 MILLION MAP SERIES



(2) This refers to the Primary
Numbers (shown in red)
* **THE PRIMARY NUMBERS ARE
READ LEFT TO RIGHT**
Only every sixth number
is shown, the rest can be
interpreted.

EXAMPLE OF 1: 1 000 000 GRATICULAR SECTION INDEX MAP - OFFSHORE SERIES



2556

* PLEASE NOTE: There are three
separate Map Series:
Offshore Series -
Commonwealth (Submerged Lands) Act 1967
State Onshore Series -
Petroleum Act 1967
and State Territorial Sea Series -
Petroleum (Submerged Lands) Act 1982

The Offshore Series sections are numbered as per the sketch above i.e 1 through to 3456
The State Onshore and Territorial Series sections are numbered from 5001 through to 8456
The Territorial Series sections are suffixed with a T to denote the difference.



Department of
Industry and Resources