

# Southwest Yilgarn earthquakes 1940–2020

by

RE Murdie

## Abstract

A new digital layer has been created containing the location and magnitude of earthquakes of the southwest Yilgarn from 1940 to December 2020 (Fig. 1). The data are a subset of the [Geoscience Australia catalogue](#), which is a nationwide dataset. Earthquake location markers are coloured by depth and scaled by preferred magnitude (usually  $M_L$ , local magnitude).

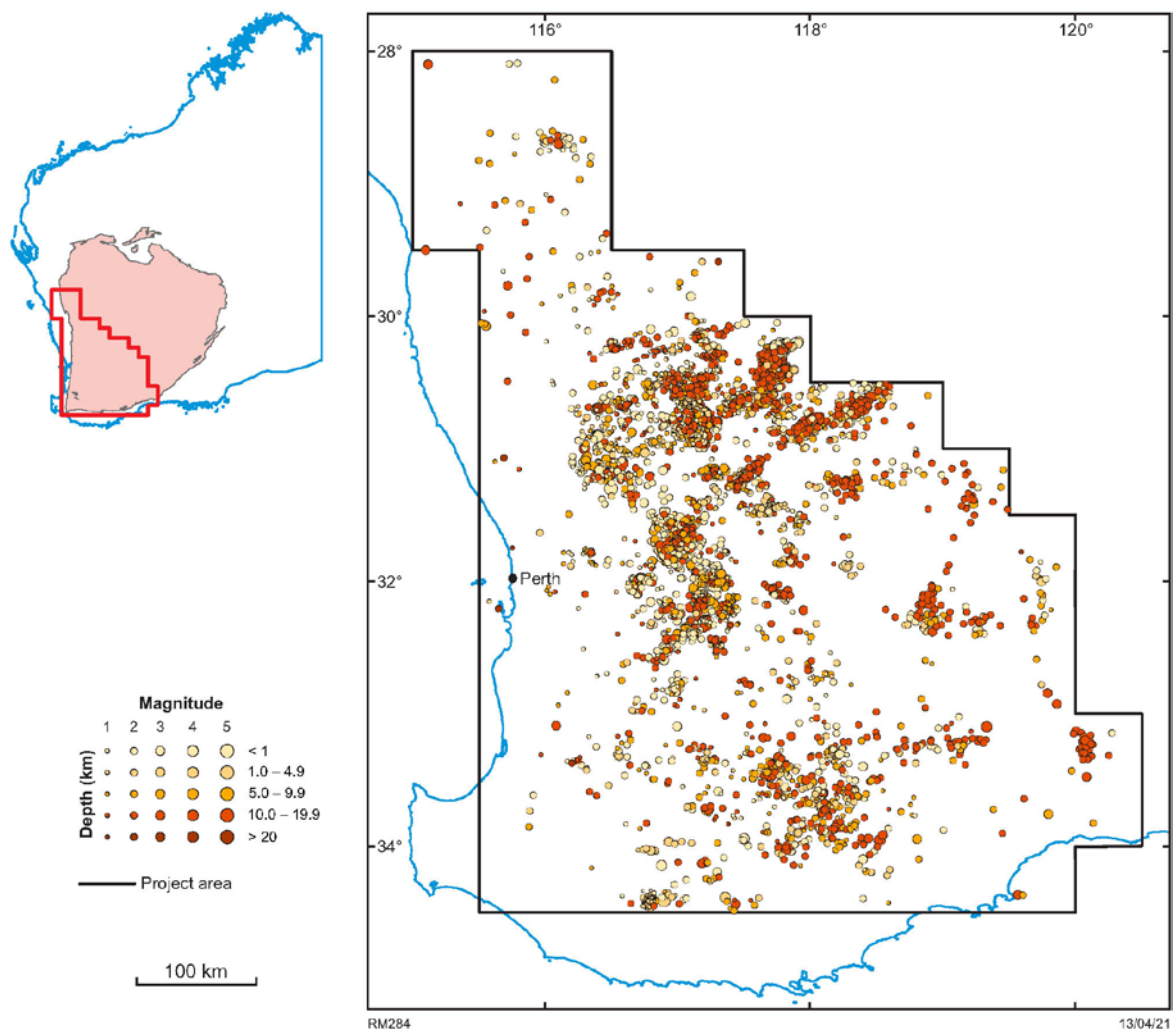


Figure 1. The Southwest Yilgarn earthquakes 1940–2020 layer

## How to access

The data layer is best accessed using [GeoVIEW.WA](http://www.dmirswa.gov.au/geoview). This online interactive mapping system allows data to be viewed and searched together with other datasets, including Geological Survey of Western Australia and Geoscience Australia geochronology data, geological maps and mineral exploration datasets. The **Southwest Yilgarn earthquakes 1940–2020** digital data are also available as a free download from the [Data and Software Centre](#) via Datasets – Statewide spatial datasets – **Geology – Southwest Yilgarn earthquakes 1940–2020**, as ESRI shapefiles and MapInfo TAB files.

## Recommended reference

Murdie, RE 2021, Southwest Yilgarn earthquakes 1940–2020: Geological Survey of Western Australia; digital data layer, <[www.dmirswa.gov.au/geoview](http://www.dmirswa.gov.au/geoview)>.



## Disclaimer

This product uses information from various sources. The Department of Mines, Industry Regulation and Safety (DMIRS) and the State cannot guarantee the accuracy, currency or completeness of the information. Neither the department nor the State of Western Australia nor any employee or agent of the department shall be responsible or liable for any loss, damage or injury arising from the use of or reliance on any information, data or advice (including incomplete, out of date, incorrect, inaccurate or misleading information, data or advice) expressed or implied in, or coming from, this publication or incorporated into it by reference, by any person whosoever.



© State of Western Australia (Department of Mines, Industry Regulation and Safety) 2021

With the exception of the Western Australian Coat of Arms and other logos, and where otherwise noted, these data are provided under a Creative Commons Attribution 4.0 International Licence. (<http://creativecommons.org/licenses/by/4.0/legalcode>)