



OPEN DAY
2022



Government of Western Australia
Department of Mines, Industry Regulation and Safety

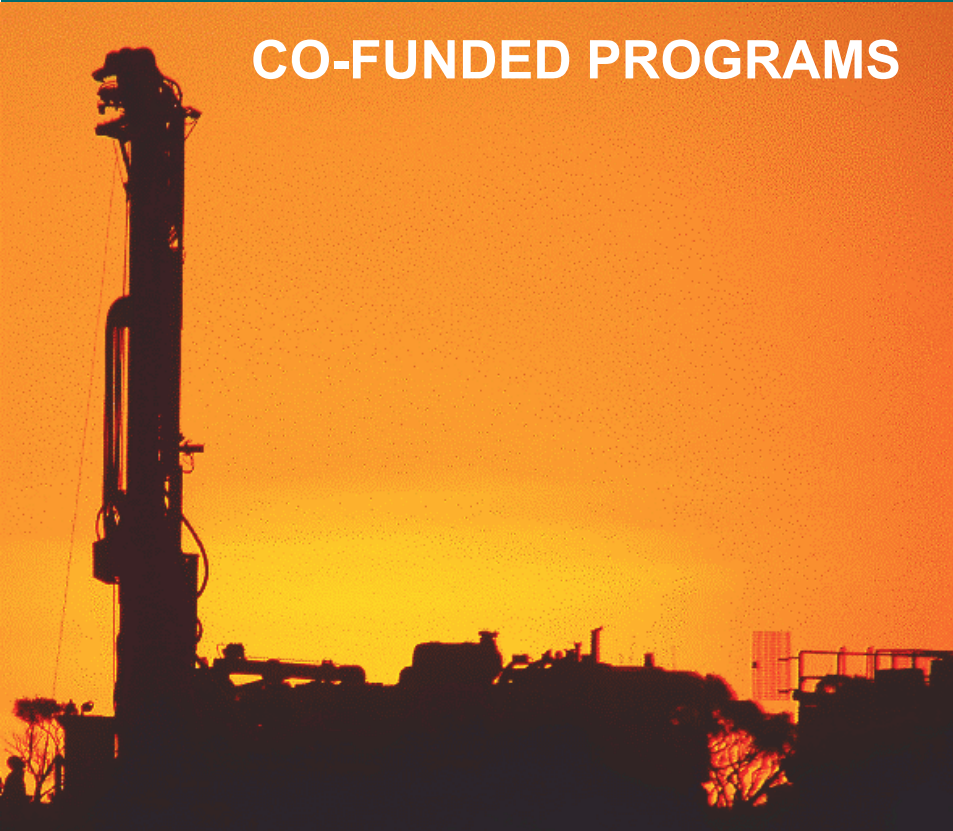


Exploration Incentive Scheme

2022 UPDATE

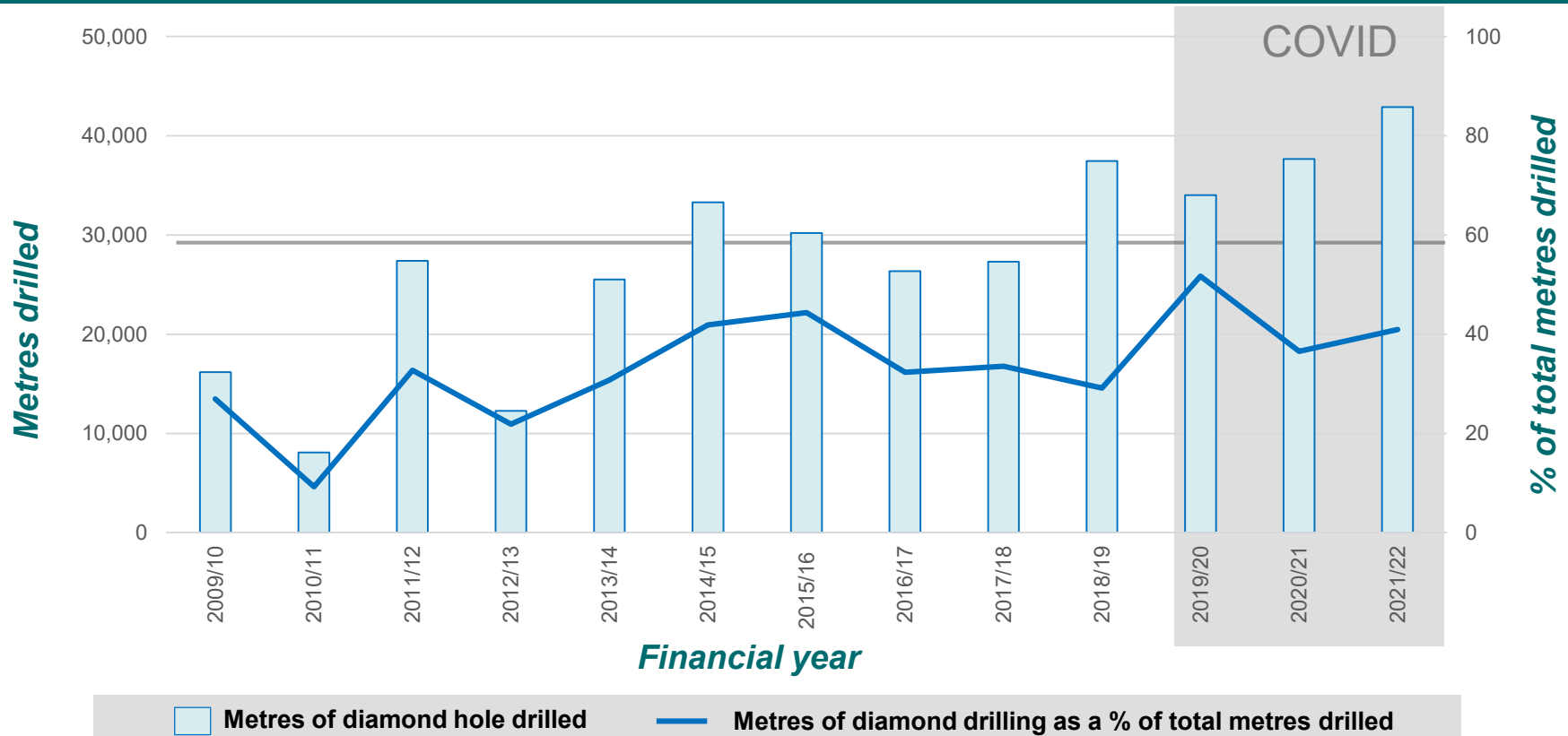
EIS - ACTIVITIES

CO-FUNDED PROGRAMS



PRE-COMPETITIVE DATA

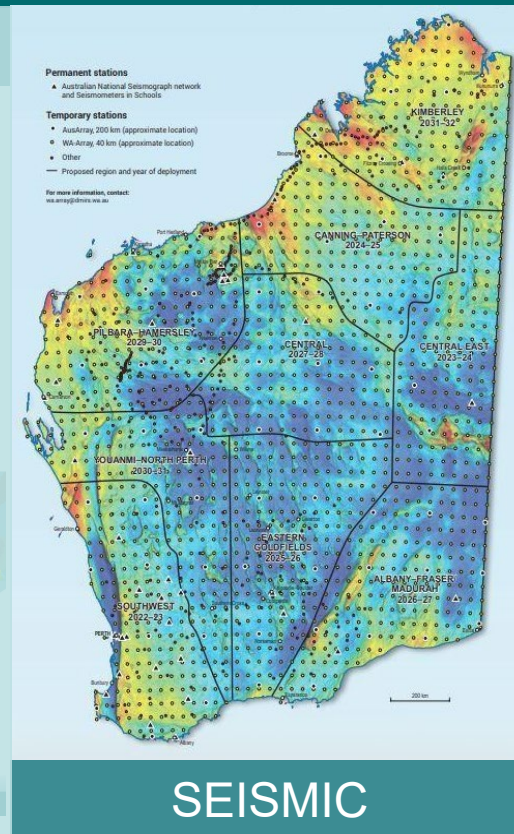
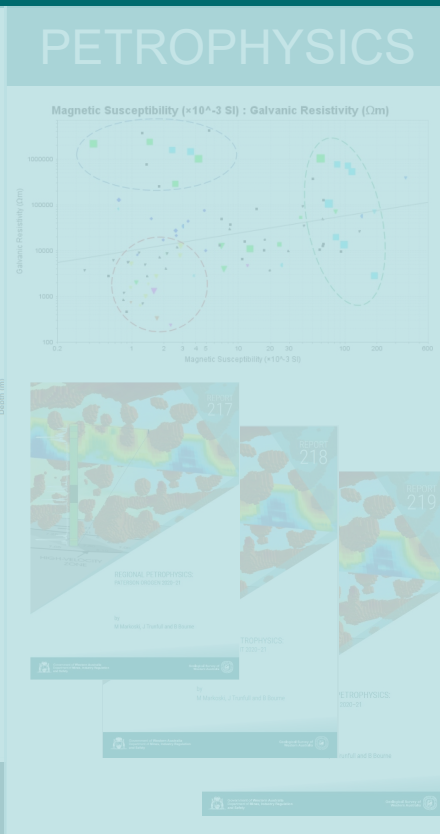
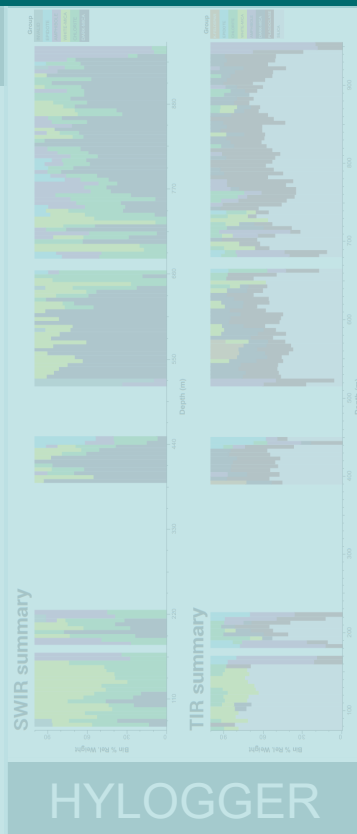
CO-FUNDED PROGRAMS - *DRILLING*



CO-FUNDED PROGRAMS - *DRILLING*



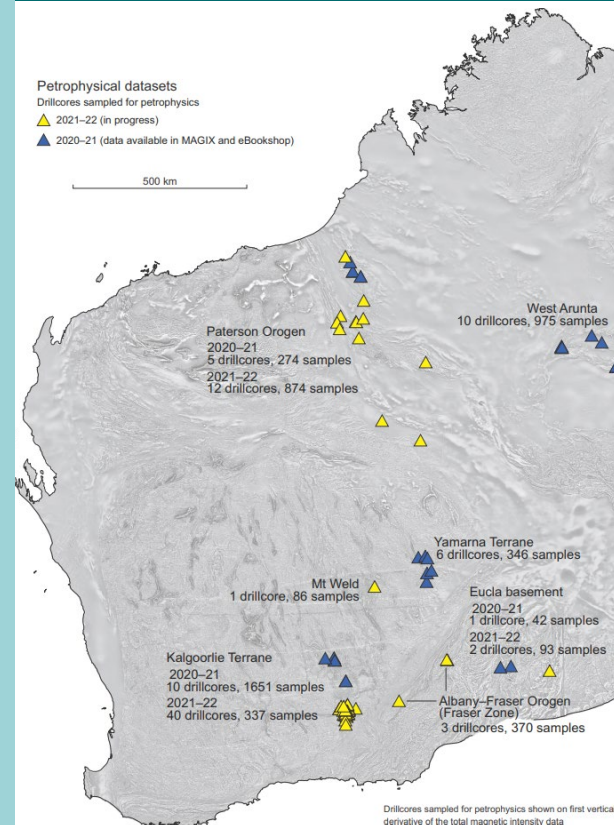
CORE



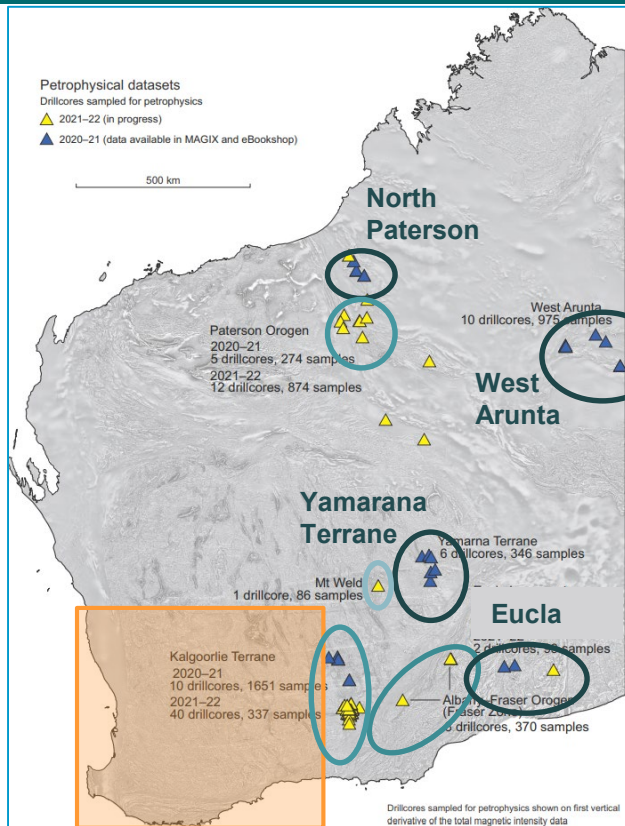
REGIONAL DATA - *PETROPHYSICS*

Collect high-quality petrophysical measurements, from significant drill core, to assist with the interpretation of geophysical data.

- *magnetic susceptibility*
- *bulk density*
- *apparent porosity*
- *remnant magnetization*
- *P-wave velocity*
- *inductive conductivity*
- *galvanic resistivity*
- *induced polarization*



REGIONAL DATA - *PETROPHYSICS*



Interpret geophysical survey data & improve targeting.

Undercover – underexplored – highly prospective

Develop a petrophysical stratigraphy

Refining existing mineral systems and prospects

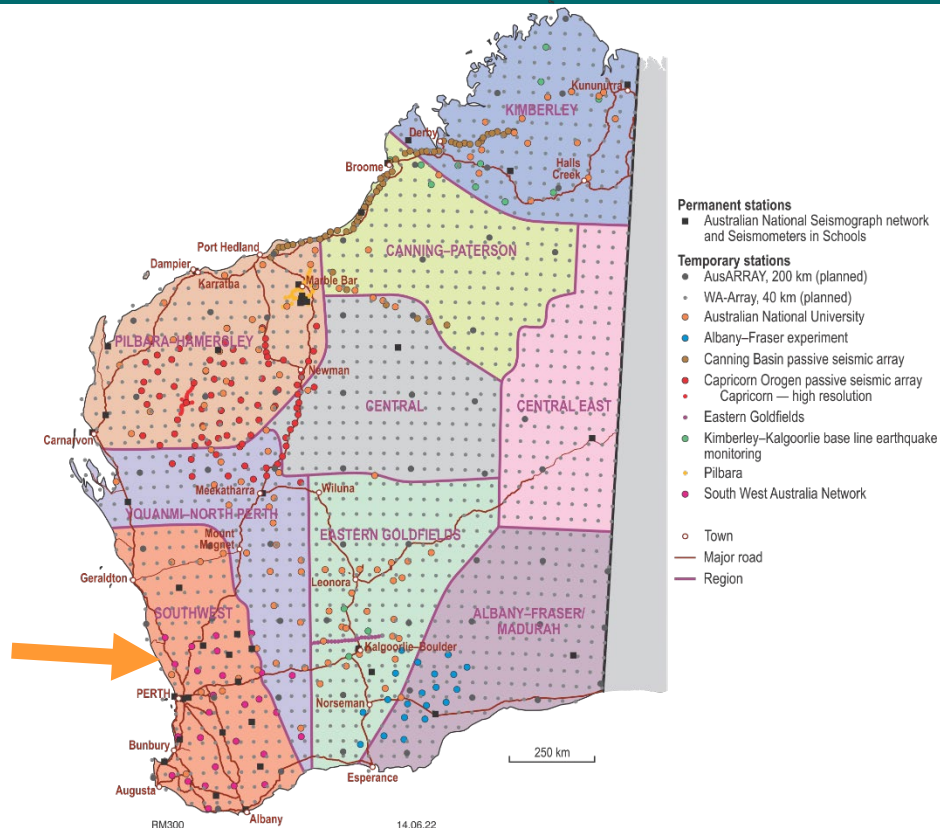
Characterise physical properties of carbonatite system

Round 22 EIS Co-funded drilling - discovery

Data available through MAGIX

South West – up next

REGIONAL DATA - *SEISMIC*



PASSIVE SEISMIC

WA-Array

- State-wide, 10 year project
- Lithospheric and deep crustal imaging
- Better quantified seismic hazards
- EIS contribution - seismometers
- First survey across the south west

REGIONAL DATA - *SEISMIC*

2D ACTIVE SEISMIC

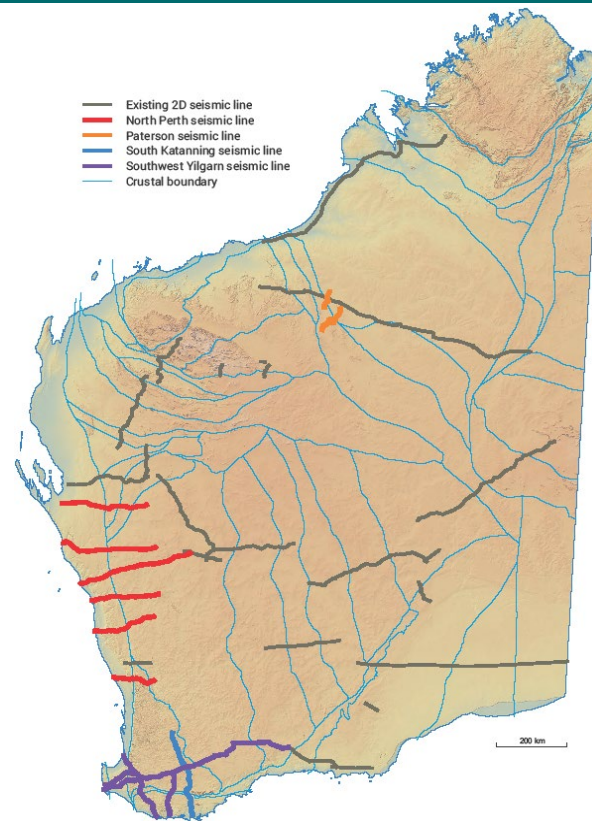
Paterson

- Improved 3D subsurface definition

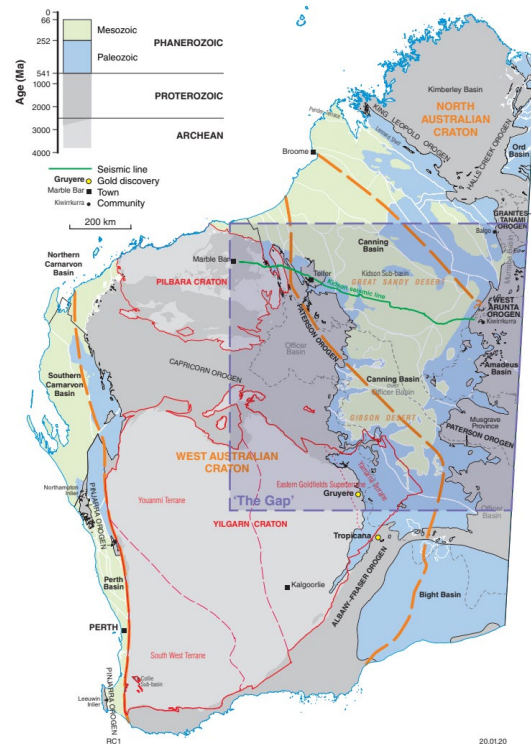
South west

- Assess crustal architecture
- Refine interpretation of major crustal boundaries

Acquisition 2023-2024



TARGETED RESEARCH – *Coil Tube Drilling*



Testing future regional application

DATA ACCESS

- **GeoVIEW** – core holes, HyLogged holes
- **WAMEX** – report and assay data
- **MAGIX** – petrophysical data and reports
- **EIS Webpage** – what's coming up

THE VALUE OF EIS – *LYNAS*

EIS Co-funded Drilling Program R22 – Lynas Rare Earths

- 1020 m deep core drilled into fresh carbonatite below the current REE open pit mine - to expand ore body knowledge of Mt Weld.
- REE mineralisation was observed – confirmed along 1010 m of the hole

‘The results reveal a large area of new exploration target in the fresh carbonatite below the zone of surficial weathering profile.’

Mining and exploration
characterisation program

Collaboration with WA
universities, MRIWA,
CSIRO, and international
investment

Support ore body
knowledge for rare earth
minerals and Heavy and
Light rare earth elements.

A large industrial drilling rig is silhouetted against a bright orange sunset sky. The rig is positioned on the left side of the frame, with its tall mast and various mechanical components visible. The sky is a vibrant orange, and the horizon line is visible in the distance. The overall scene is a high-contrast silhouette of industrial equipment against a natural background.

THANK YOU