



OPEN DAY
2022



Tenure for emerging industries

Samantha Carter – General Manager
Land Use Planning

Diversification of the State's economy

The rapidly growing renewable energy sector requires large areas of land for activities such as wind farms, solar energy and renewable hydrogen production.



Diversification Leases

- Proposed new tenure for non-exclusive land use similar to a pastoral lease where access is maintained for Aboriginal persons/native title holders and the resources industry.
- Areas of 'exclusivity' – for substantial structures such as solar panel arrays, wind turbines etc.
- Intensive facilities – processing plants – will likely require exclusive LAA Lease or Freehold tenure



Diversification leases vs the Mining Act

- Diversification leases will be 'Crown land' under the Mining Act
- Same exploration, mining and access limits as on pastoral leases
 - i.e. cannot be within 100m of house or substantial structure, 400m from water infrastructure
- Minister for Mines must provide approval for the lease grant and any variations of purpose/exclusive use areas.



Two Stage Process

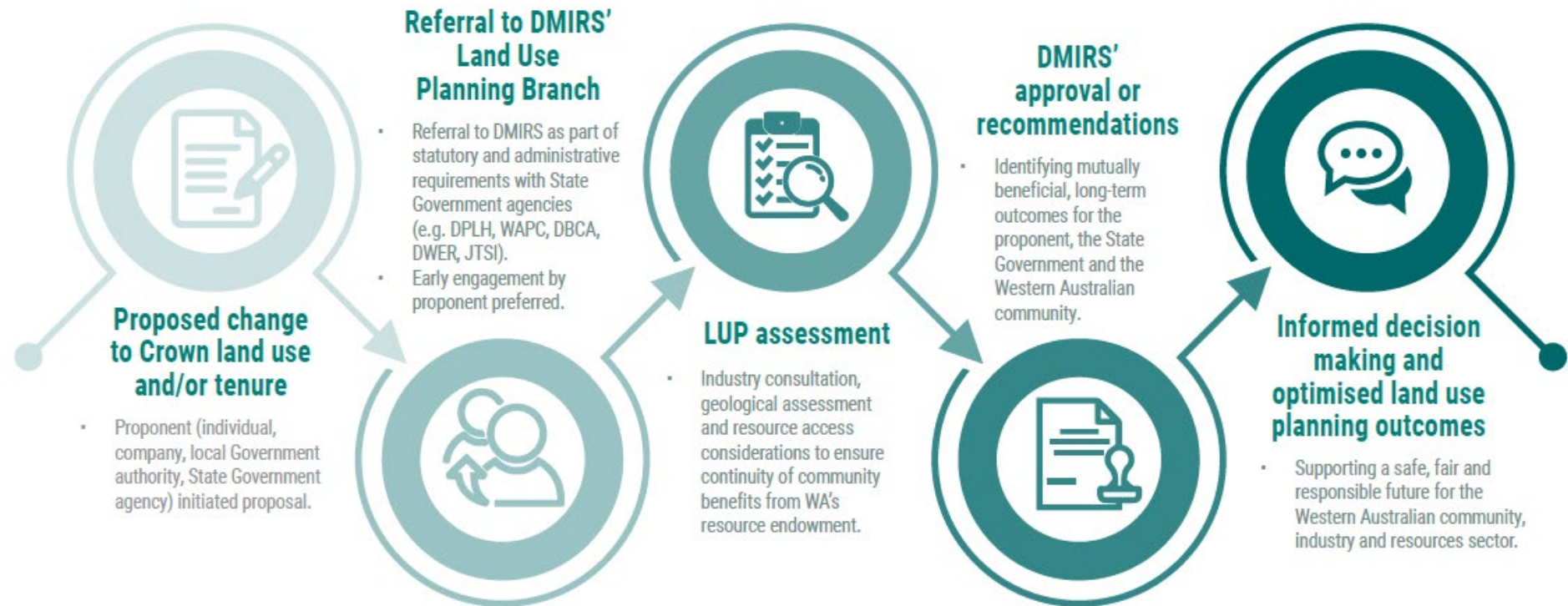
- Stage 1: Investigation and feasibility studies will be facilitated by section 91 LAA licences.
- Stage 2: Implementation (including construction and operation) will be facilitated by section 79 LAA Leases, LAA diversification leases and section 144 LAA easements.

DMIRS' role

DMIRS' Land Use Planning Branch plays a key role in providing geological information, advice and approvals to assist in government decision making related to the most appropriate use of land.

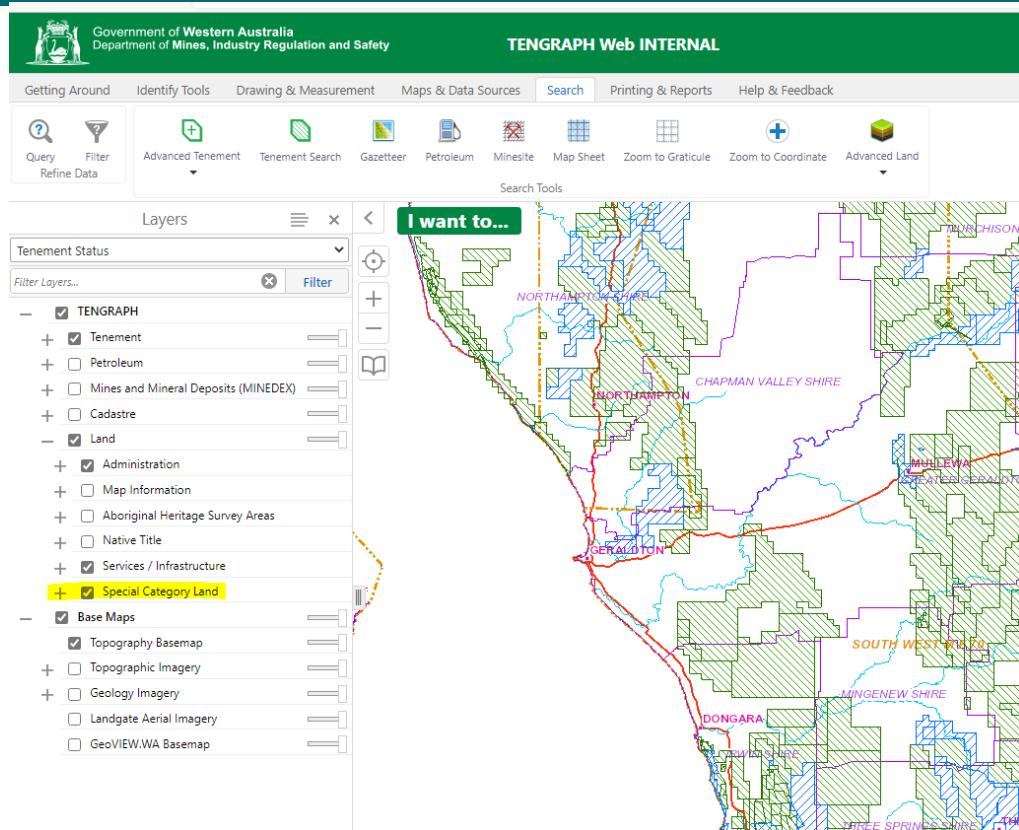


Assessment process



File Notation Areas (FNA)

- Land tenure proposals are spatially mapped as FNAs and show competing interests in the same area.
- Displayed in Tengraph Web and GeoVIEW – Select 'File Notations Areas' under Layers - 'Special Category Land'.



Coexistence of Projects

- To date, DMIRS has facilitated approvals for over 6.3 million hectares of land for renewable hydrogen investigatory licences under the LAA
- Diversification leases will have a strong emphasis on co-existence and shared infrastructure.
- Early engagement between all interest holders is strongly encouraged.



For more information contact us

landuseplanning@dmirs.wa.gov.au

Visit our website

