



Approvals Performance Report

The approvals data table shows that the Department has continued to achieve a high level of performance across all key regulatory areas for the second quarter 2010. Highlights include:

- even though increasing numbers of environmental applications were received, a high level of compliance with the Department's timeline target was maintained;
- the number of pending mining tenure applications decreased by more than 300 to 8078; and
- a very high level of compliance with timeline targets for petroleum tenure applications was coupled with a marked decrease in the number of pending applications.

Whole-of-process approval timelines

DMP, as the lead agency for the resources sector, is responsible for monitoring not only its own performance against internal timeline targets, but also other components of the approvals process. This enables the Department to implement actions to address any issues affecting overall timelines, resulting in measures such as the development of improved inter-agency administrative agreements.

Figure 1 provides an analysis of the total length of time required to obtain environmental approval to conduct exploration activity in the mining sector over the past six quarters.

This data demonstrates that over seventy per cent of all Programmes of Work are processed within a total of thirty days, including the time taken for events outside of the Department's direct control such as the time taken to receive approvals from other agencies or where additional information from proponents is required.

Over this period, DMP processed over ninety per cent of applications within its internal target timeline of thirty days.

This was achieved despite significantly increased minerals exploration activity. Figure 2 shows that, between Q1 2009 and Q2 2010, the number of applications received almost doubled.

Compliance with approval timeframes was maintained through improved administrative arrangements for the processing of applications, including the introduction of online lodgement facilities for environmental applications.

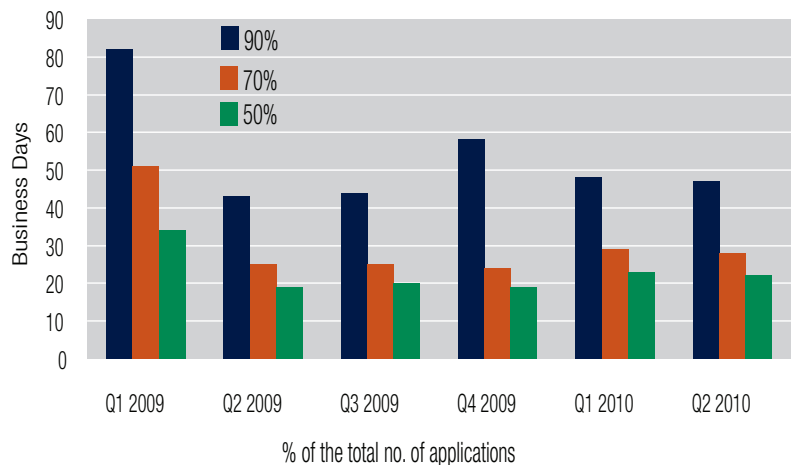


Figure 1 | Programmes of Work
Whole-of-process approval timelines

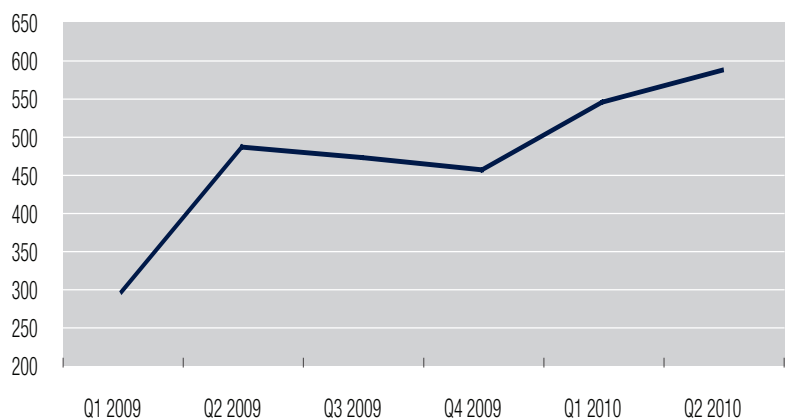


Figure 2 | Programmes of Work
Number of applications received

To assist with the continual improvement of information provided, feedback from stakeholders or the public on the usefulness of this report is welcomed.

APPROVALS DATA TABLE – SECOND QUARTER 2010

The following table represents the number of applications received and processed by DMP for its key approval processes. For applications that completed the approvals process, an assessment of DMP's performance against timeline targets is also provided. The timeline target applies only to parts of the process completed by DMP and does not include, for example, the time taken for assessment by other government agencies or where the assessment process is put on hold while additional information is being sought from applicants.

It is acknowledged that the processes involved in completing approvals can vary widely in their complexity and scope. Nevertheless, for the sake of simplicity, all applications are compared with timelines within which it has been agreed that, with existing levels of assessing officers, the majority of applications can be completed.

Minerals Sector								
Timeline target (business days)	No. carried over from previous quarter	No. received in Q2 2010	No. approved in Q2 2010	No. otherwise dealt with (i.e. refused, lapsed, rejected or withdrawn)	No. approved within timeline target	% approved within timeline target	No. carried over to next quarter	
Tenure Applications								
Data used to assess performance against the timeline target only applies to applications received since 1 January 2009 (when the tracking of applications commenced). The total number of applications in the system have been separated into two categories – those received since 1/1/2009 and those received prior. The percentage approved within the timeline target calculation for mining tenure applications are calculated on all determined tenements (i.e. all approved and otherwise dealt with applications).								
Prospecting Licence	65	1215	340	304	50	286	81%	1201
- pre 1/1/09		740		111	19			610
Exploration Licence	65	2883	674	343	236	526	91%	2978
- pre 1/1/09		1507		92	93			1322
Mining Lease	65	124	38	14	6	18	90%	142
- pre 1/1/09		1414		45	40			1329
Others (i.e. Miscellaneous Licence, General Purpose Lease, Retention Licence)	65	180	60	29	13	39	93%	198
- pre 1/1/09		321		12	11			298
Environmental Approvals								
DMP processes Native Vegetation Clearing Permits for the resources sector via a delegation from the Department of Environment. Performance measures are published on DEC's website.								
Programme of Work (exploration)	30	233	583	549	21	502	91%	246
Mining Proposal	30	100	81	61	9	49	80%	110
Petroleum and Geothermal Sector								
Timeline target (business days)	No. carried over from previous quarter	No. received in Q2 2010	No. approved in Q2 2010	No. otherwise dealt with (i.e. refused, lapsed, rejected or withdrawn)	No. approved within timeline target	% approved within timeline target	No. carried over to next quarter	
Tenure Applications								
Includes grant or renewal of Exploration Permits, Production Licences and Retention Leases; grant, renewal or variation of Pipeline Licences; "Surveys" also incorporate Special Prospecting/Access Authorities and Scientific Investigations.								
Exploration Permit	120	58	11	19	9	19	100%	41
Production Licence Retention Lease	90	15	1	2	0	1	50%	14
Pipeline Licence	90	12	3	5	0	5	100%	10
Well	40	20	22	25	5	25	100%	12
Survey	40	32	10	21	0	21	100%	21
Environmental Approvals								
Incorporates environmental plans and oil spill contingency plans for petroleum operations in both Commonwealth and State areas.								
Environmental Plans	30	24	65	40	28	39	98%	21