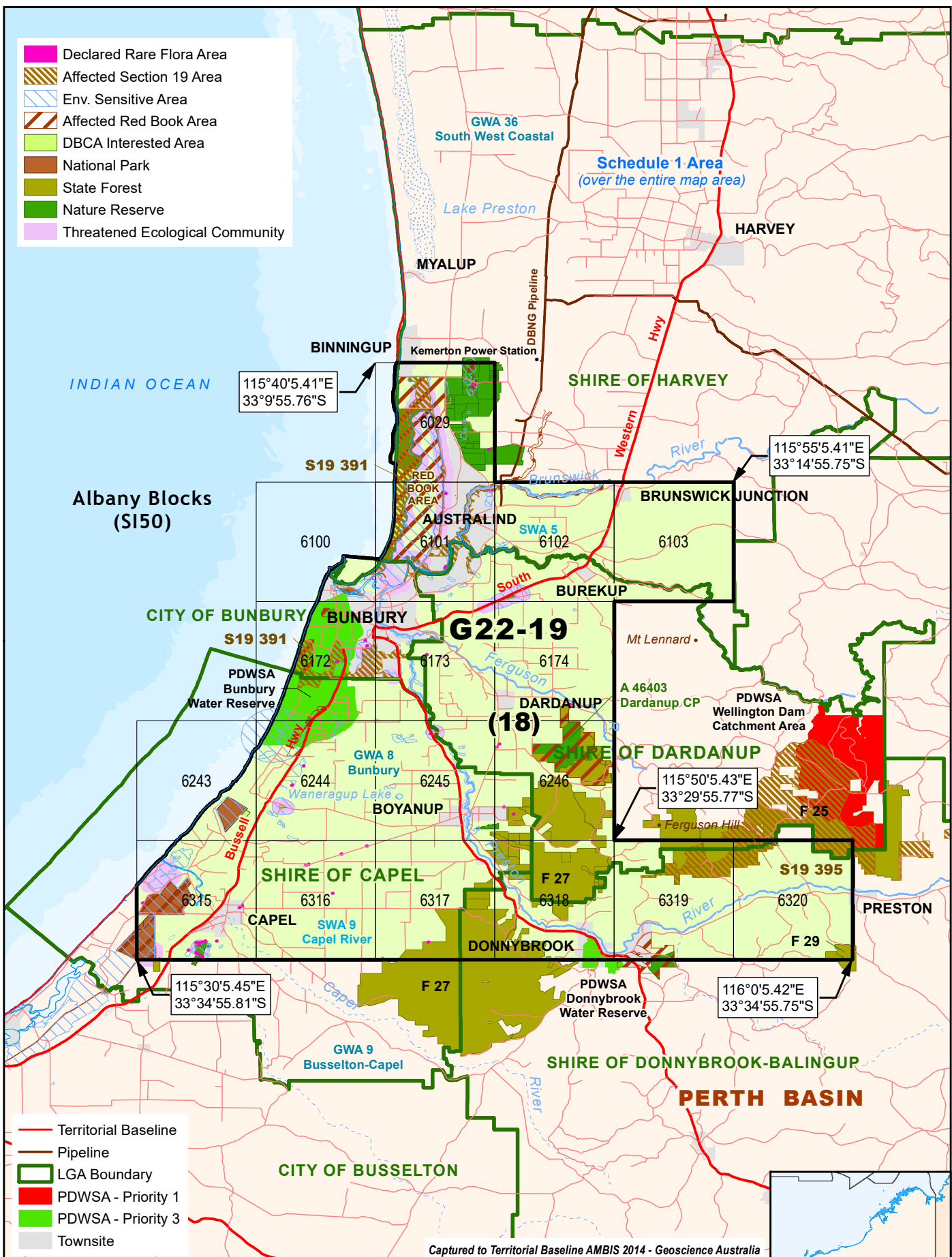


- Declared Rare Flora Area
- Affected Section 19 Area
- Env. Sensitive Area
- Affected Red Book Area
- DBCA Interested Area
- National Park
- State Forest
- Nature Reserve
- Threatened Ecological Community



- Territorial Baseline
- Pipeline
- LGA Boundary
- PDWSA - Priority 1
- PDWSA - Priority 3
- Townsite

Captured to Territorial Baseline AMBIS 2014 - Geoscience Australia

Government of Western Australia
Department of Mines, Industry Regulation and Safety

GDA

Geothermal Release Area G22-19 Environment



Coordinates are in accordance with Section 8 of the Petroleum and Geothermal Energy Resources Act 1967 (WA) (PGERA67). The displayed grid defining the 5' x 5' blocks is AGD66 and coordinates shown are GDA94.

