



Data for three-month period 1 April – 30 June 2017

Issued October 2017

The quarterly performance snapshots show injury and incident data provided to the Department by the minerals sector for a three-month period. The snapshots can be used by employers and workers to assist in the development and promotion of safe work practices on mining operations.

For more information about injuries and incidents in the minerals sector, visit our website [www.dmirs.wa.gov.au](http://www.dmirs.wa.gov.au)

@DMIRS\_WA

Department of Mines, Industry Regulation and Safety

## Injuries by age

Age range with the **greatest percentage** of injuries was **30-39 years (29%)**

**30-39 years**



Age range 40-49 was 2nd highest (25%)

## Injuries by number



**191**  
serious injuries



**66**  
minor injuries

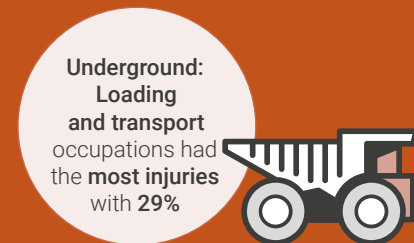


**1**  
non-disabling injury

## Injuries by occupation

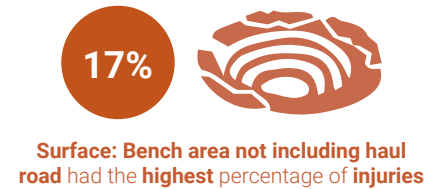


Mechanical fitters were 2nd highest with 19%

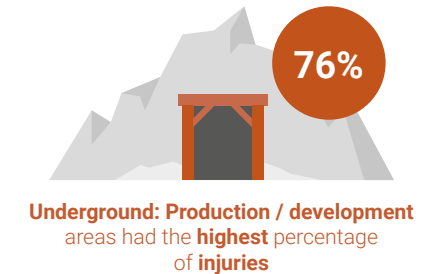


Service occupations were 2nd highest with 27%

## Injuries by location

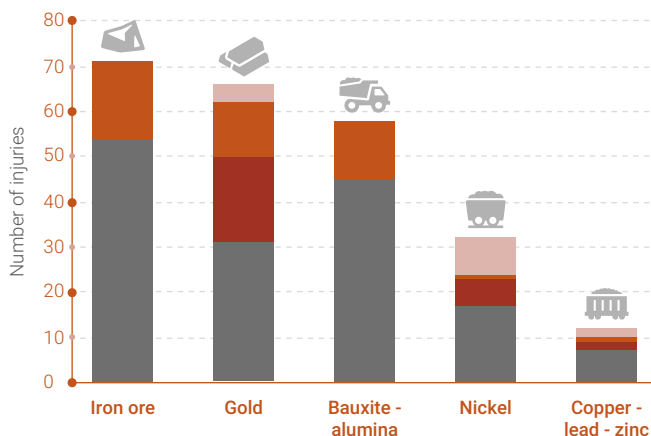


Crushing, screening or conveyor had the 2nd highest with 14%

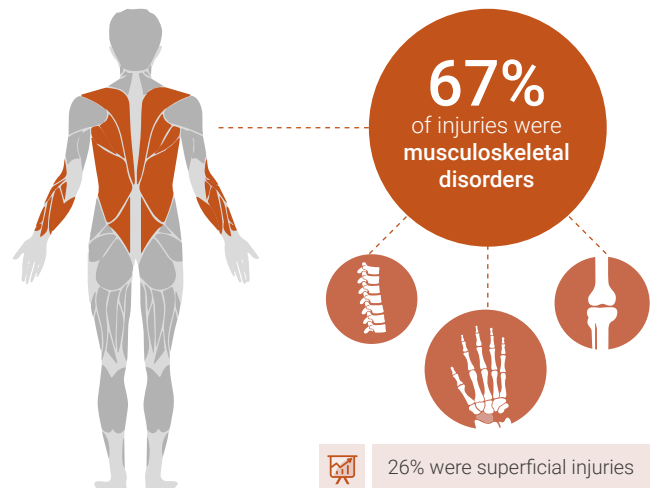


Underground access and haulage had the 2nd highest with 15%

## Injuries by commodity (top 5)



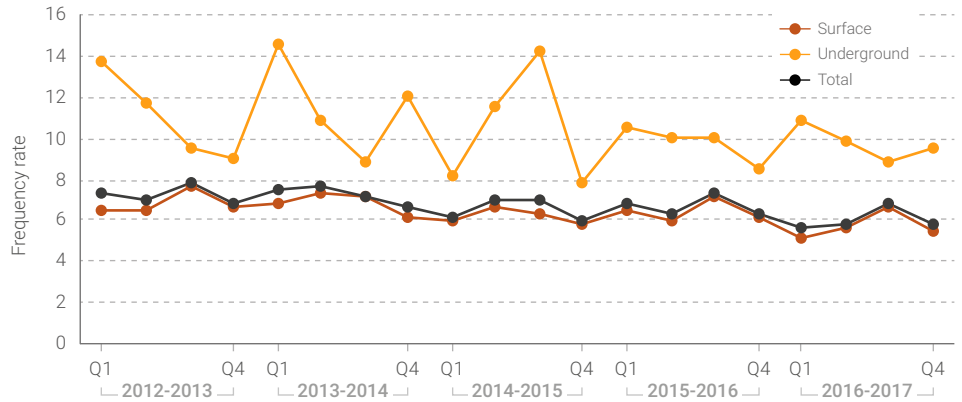
## Injuries by nature



### Injury frequency rate (number of injuries per million hours worked)

Last quarter, surface injuries were decreasing, with underground injuries taking a slight upturn. Overall total injuries have shown a small decrease.

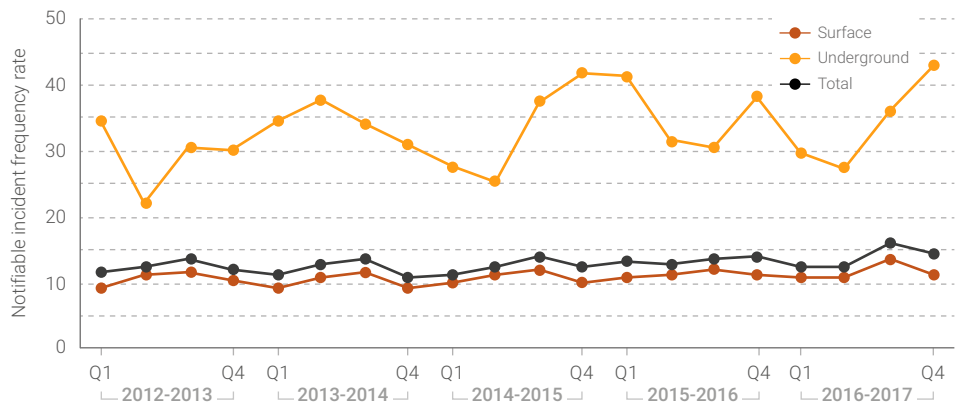
Make sure you can recognise the hazards associated with your workplace and the work you do, understand the risks, and know how to implement the control measures.



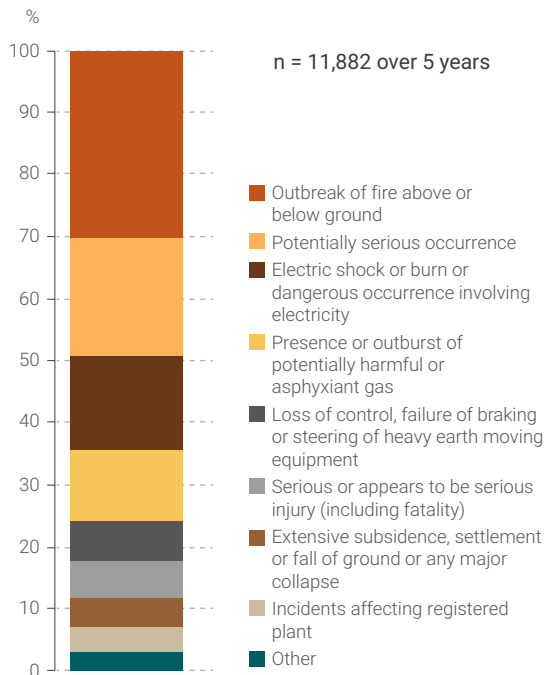
### Notifiable incidents frequency rate (number of incidents per million hours worked)

Specific types of incidents, including near misses, are required to be reported to the Department. This reporting is important to identify trends and clusters of incidents that need to be addressed to help prevent injuries.

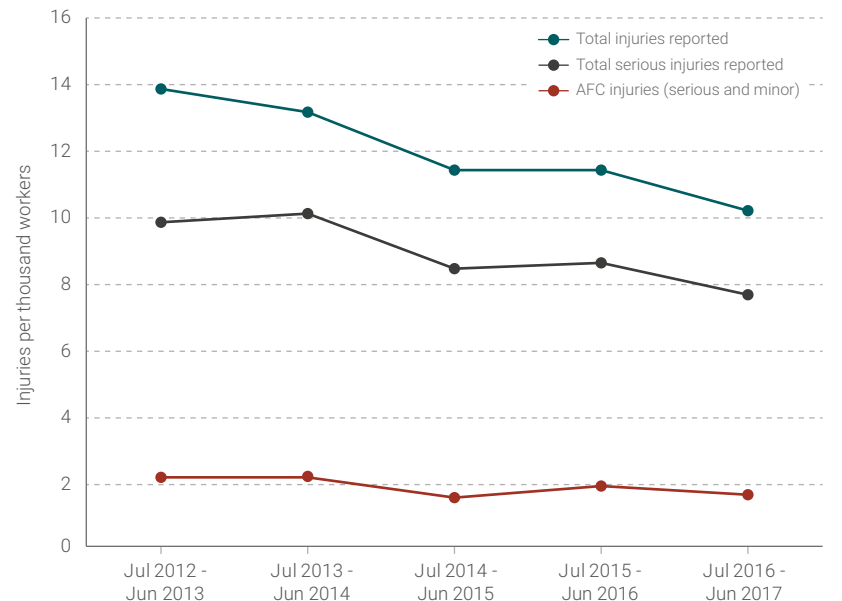
What is the reporting culture like at your site?



### Notifiable incidents by reporting category



### High-consequence serious injuries (amputations, fractures and crushing)



For further information, see *Analysis of serious injury data in the Western Australian mining industry July-December 2013*