



Quarterly Performance Snapshot

for the Western Australian minerals sector

Data for three-month period 1 October - 31 December 2019

Issued August 2020

The quarterly performance snapshots show lost time and restricted work injury and incident data provided to the Department by the minerals sector for a three-month period. The snapshots can be used by employers and workers to assist in the development and promotion of safe work practices on mining operations.

For more information about injuries and incidents in the minerals sector, visit our website www.dmirs.wa.gov.au

@DMIRS_WA

Department of Mines,
Industry Regulation and Safety

Injuries by age

Age range with the **greatest percentage** of injuries were **30-39 years** and **40-49 years (25%)**



Age range 20-29 were 3rd highest (22%)

Injuries by severity



264
serious injuries

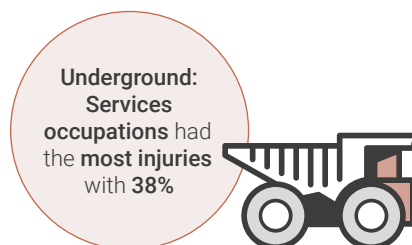


63
minor injuries

Injuries by occupation

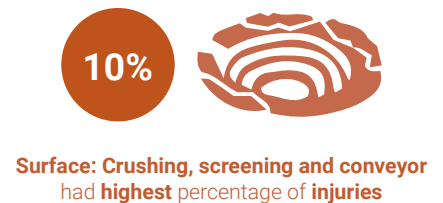


Mechanical fitters were 2nd highest with 18%

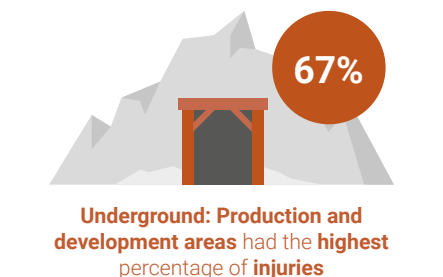


Long hole drill and blast and production or development occupations were 2nd highest with 15% each

Injuries by location



Workshop heavy equipment had the 2nd highest with 9%

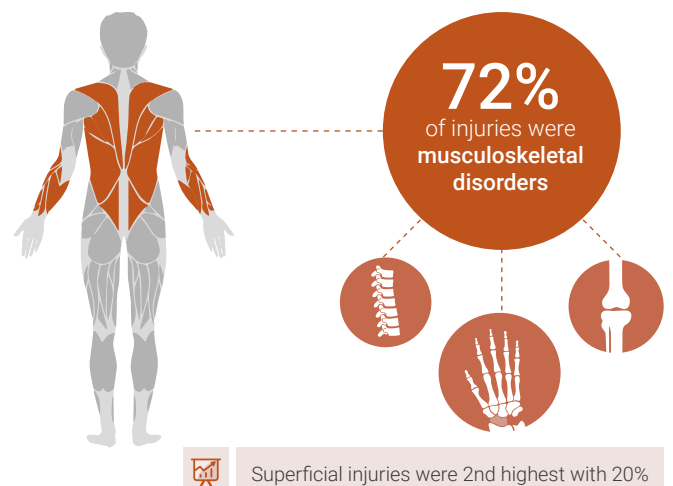


Underground access or haulage ways had the 2nd highest with 26%

Injury frequency rate for top 5 commodities (number of injuries per million hours worked)



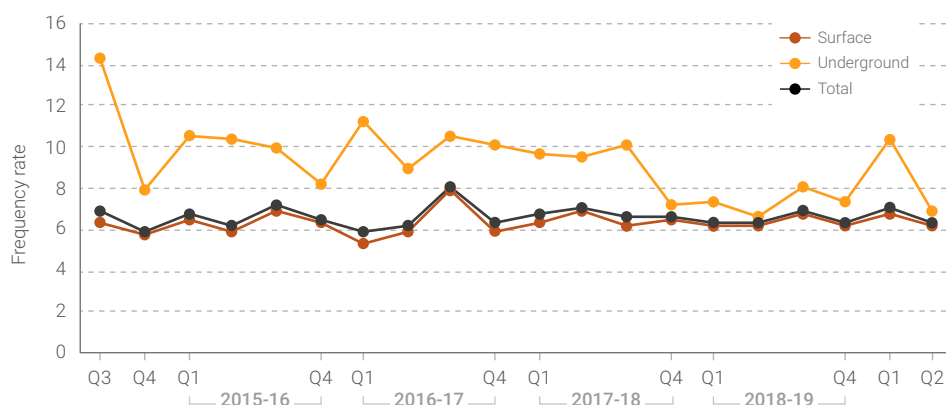
Injuries by nature



Injury frequency rate (number of injuries per million hours worked)

The overall injury frequency rate decreased from 7.1 in the July to September quarter to 6.3 this quarter.

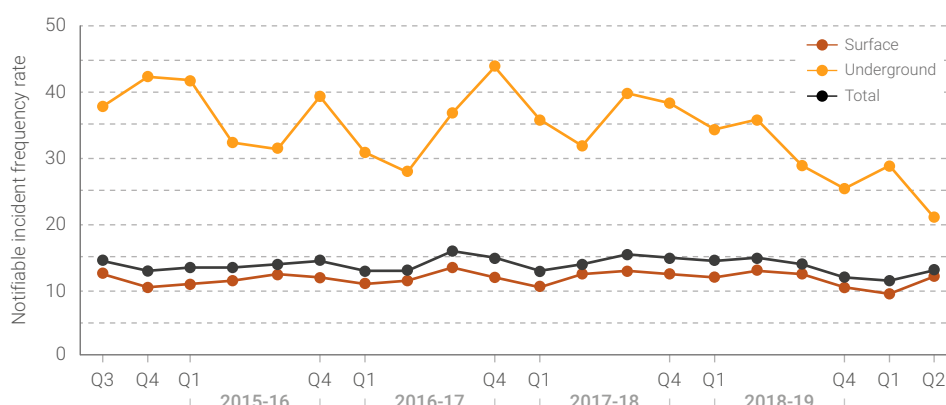
Make sure you can recognise the hazards associated with your workplace and the work you do, understand the risks, and know how to implement the control measures.



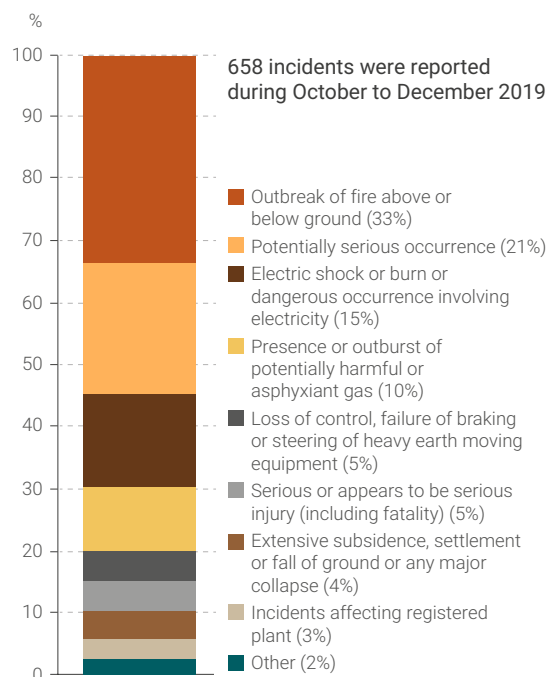
Notifiable incidents frequency rate (number of incidents per million hours worked)

Specific types of incidents, including near misses, are required to be reported to the Department. This reporting is important to identify trends and clusters of incidents that need to be addressed to help prevent injuries.

What is the reporting culture like at your site?



Notifiable incidents by reporting category



Amputation, fracture and crush injuries in comparison to all reported injuries

