



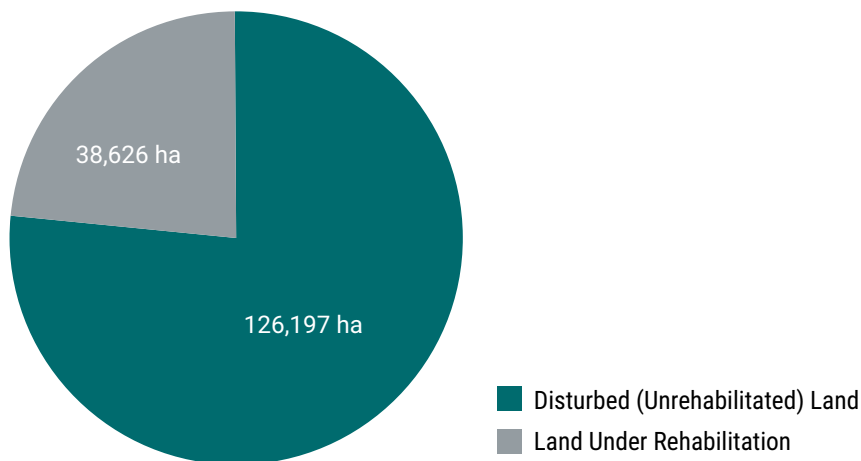
Summary Data

MRF tenement activities for July 2017– June 2018 period

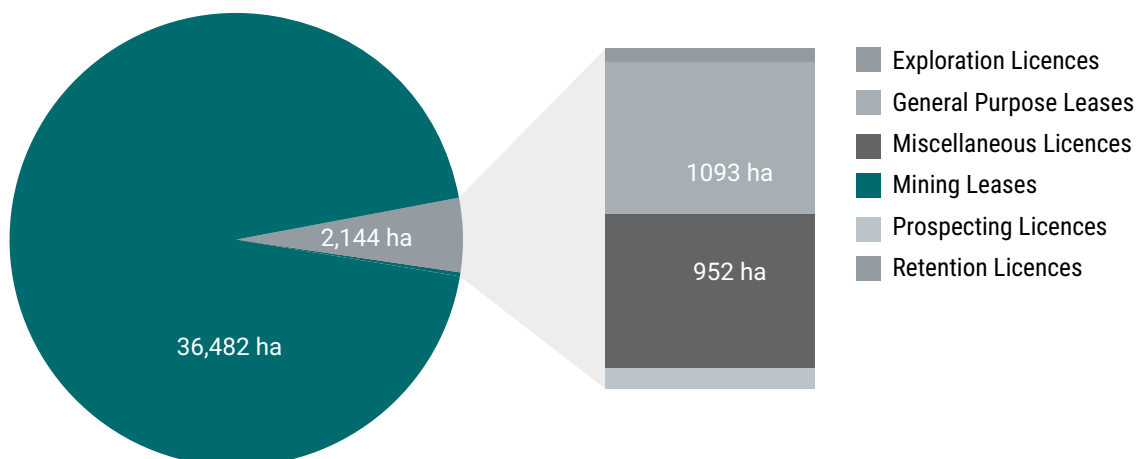
Released under section 15(3) of the *Mining Rehabilitation Fund Act 2012*

	Disturbance (ha)	Land Under Rehabilitation (ha)
Exploration Licences	10,514	32
General Purpose Leases	3,139	1,093
Miscellaneous Licences	12,881	952
Mining Leases	98,677	36,482
Prospecting Licences	603	67
Retention Licences	383	0
Total	126,197	38,627

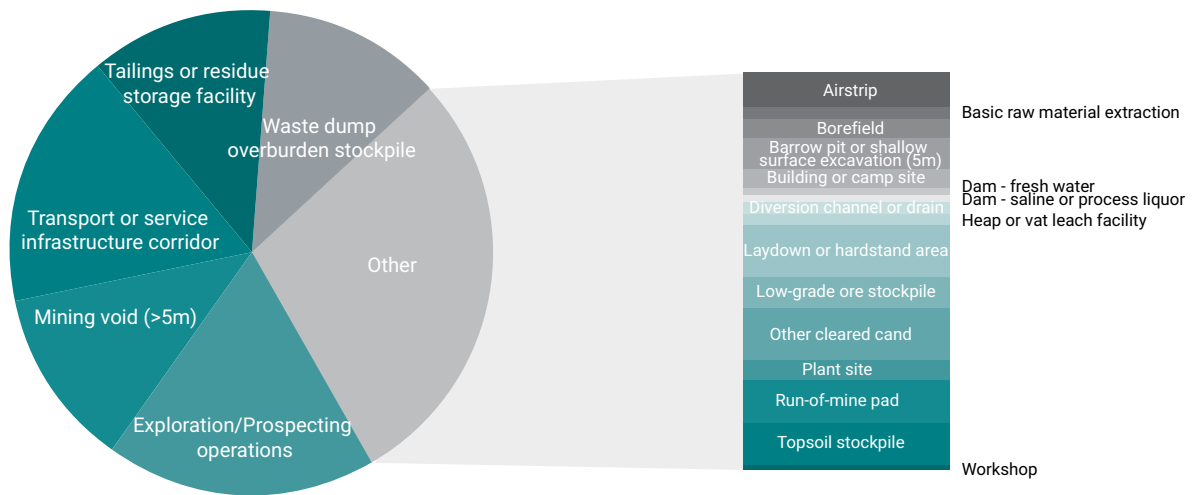
(based on data as at 17 September 2018)



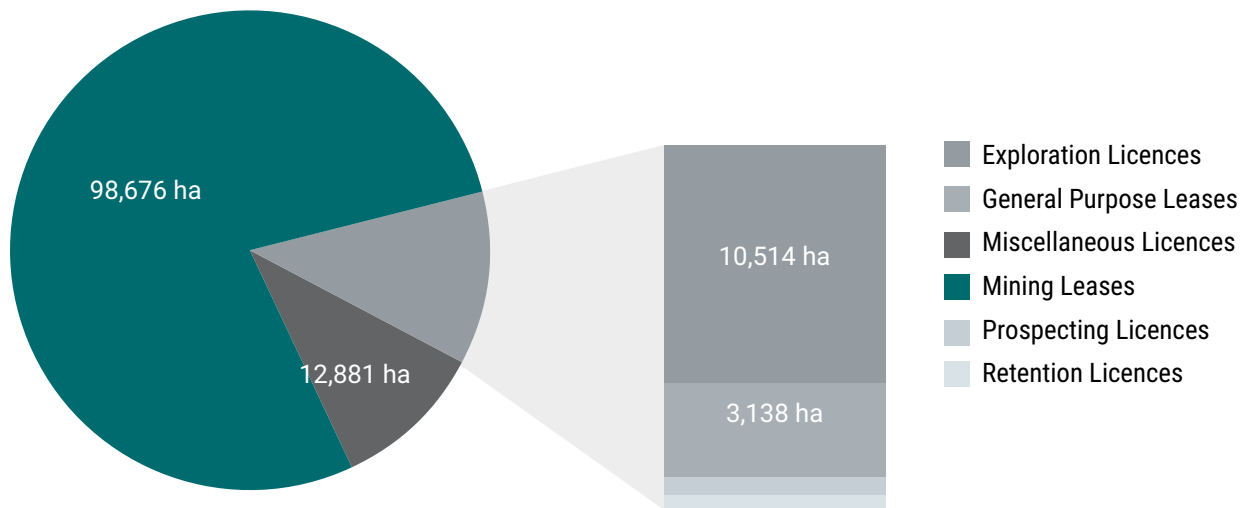
Total Disturbance



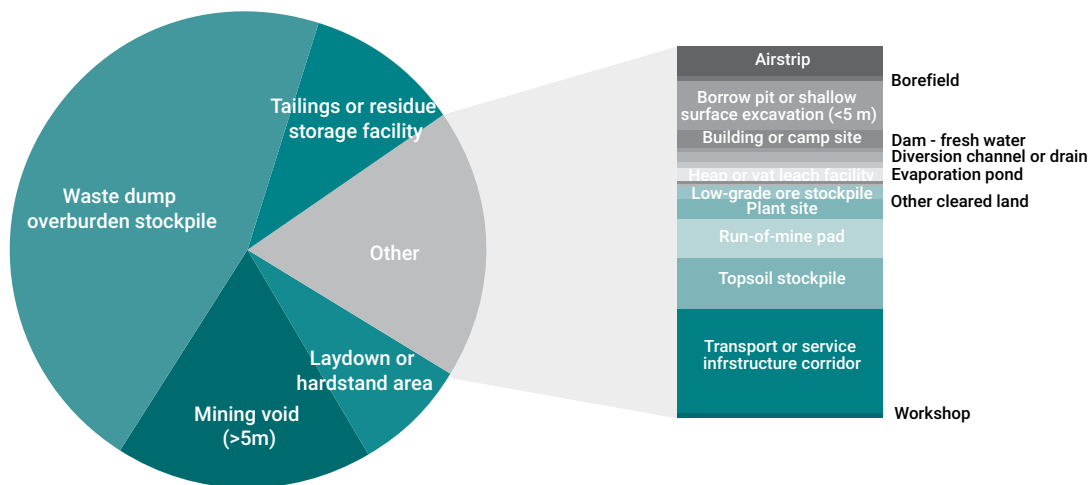
Land Under Rehabilitation



Disturbance Land



Disturbance (ha)



Land Under Rehabilitation (ha)

Mining Activity Type	Disturbance (ha)	Land Under Rehabilitation (ha)
Airstrip	1,693	213
Basic raw material extraction - processing equipment or stockpile associated with basic raw material extraction	600	42
Borefield	1,616	26
Borrow pit or shallow surface excavation (with a depth of less than 5 metres)	2,434	1,737
Building (other than workshop) or camp site	1,347	241
Core yard	175	3
Dam - fresh water	490	38
Dam - saline water or process liquor	570	16
Diversion channel or drain	1,158	159
Evaporation pond	1,279	188
Exploration/prospecting operations - land (other than land under rehabilitation or rehabilitated land) that has been disturbed by exploration operations	21,925	-
Fuel storage facility	56	17
Heap or vat leach facility	583	215
Landfill site	181	47
Laydown or hardstand area	5,666	3,049
Low-grade ore stockpile (class 1)	1,122	109
Low-grade ore stockpile (class 2)	1,727	257
Mining void (with a depth of at least 5 metres) - above ground water level	6,125	1,848
Mining void (with a depth of at least 5 metres) - below ground water level	9,218	5,276
Other cleared land - land (other than land under rehabilitation or rehabilitated land) that is cleared of vegetation and is not otherwise described in thibable	5,497	-
Plant site	1,439	229
Run-of-mine pad	3,604	468
Sewage pond	133	8
Tailings or residue storage facility (class 1)	13,121	2,866
Tailings or residue storage facility (class 2)	1,903	1,119
Topsoil stockpile	4,176	921
Transport or service infrastructure corridor	23,061	1,691
Waste dump or overburden stockpile (class 1)	12,681	14,497
Waste dump or overburden stockpile (class 2)	2,258	3,305
Workshop	357	41
Total	126,197	38,627

(based on data as at 17 September 2018)

Mining Activity Type (Simplified)	Disturbance (ha)	Land Under Rehabilitation (ha)
Airstrip	1,693	213
Basic raw material extraction	600	42
Borefield	1,616	26
Borrow pit or shallow surface excavation (< 5 m)	2,434	1,737
Building or camp site	1,347	241
Core yard	175	3
Dam - fresh water	490	38
Dam - saline water or process liquor	570	16
Diversion channel or drain	1,158	159
Evaporation pond	1,279	188
Exploration/prospecting operations	21,925	-
Fuel storage facility	56	17
Heap or vat leach facility	583	215
Landfill site	181	47
Laydown or hardstand area	5,666	3,049
Low-grade ore stockpile	2,849	366
Mining void (> 5 m)	15,344	7,124
Other cleared land	5,497	-
Plant site	1,439	229
Run-of-mine pad	3,604	468
Sewage pond	133	8
Tailings or residue storage facility	15,024	3,985
Topsoil stockpile	4,176	921
Transport or service infrastructure corridor	23,061	1,691
Waste dump or overburden stockpile	14,939	17,803
Workshop	357	41
Total	126,197	38,627

(based on data as at 17 September 2018)

Note: This information is collected solely for the purposes of calculating the levy, and should be used with caution when drawing conclusions, particularly about trends in mining and rehabilitation activity. Additionally, it should be noted that:

- the Rehabilitation Liability Estimate (derived by applying the category unit rates to the reported areas of activity) is a 'normalised' base for deriving levies across activities and does not necessarily correlate in any way to 'real' rehabilitation costs at any one site.
- the reported area (in hectares) is a 'snapshot in time' that can be assessed by tenement holders at any point in the year.
- changes in disturbance and rehabilitation levels from one reporting period to the next may be comparing data that was not assessed at the same point in time (e.g. they could be assessed by the holder on 30 June in Year 1 and on 1 July in Year 2) and/or may not show the impact of increases and decreases that occur within the reporting period.
- the data does not include disturbance and rehabilitation attributable to operators under a State Agreement. It therefore reflects only a sub-set of mining activity across the State and is unlikely to be indicative of the industry as a whole.