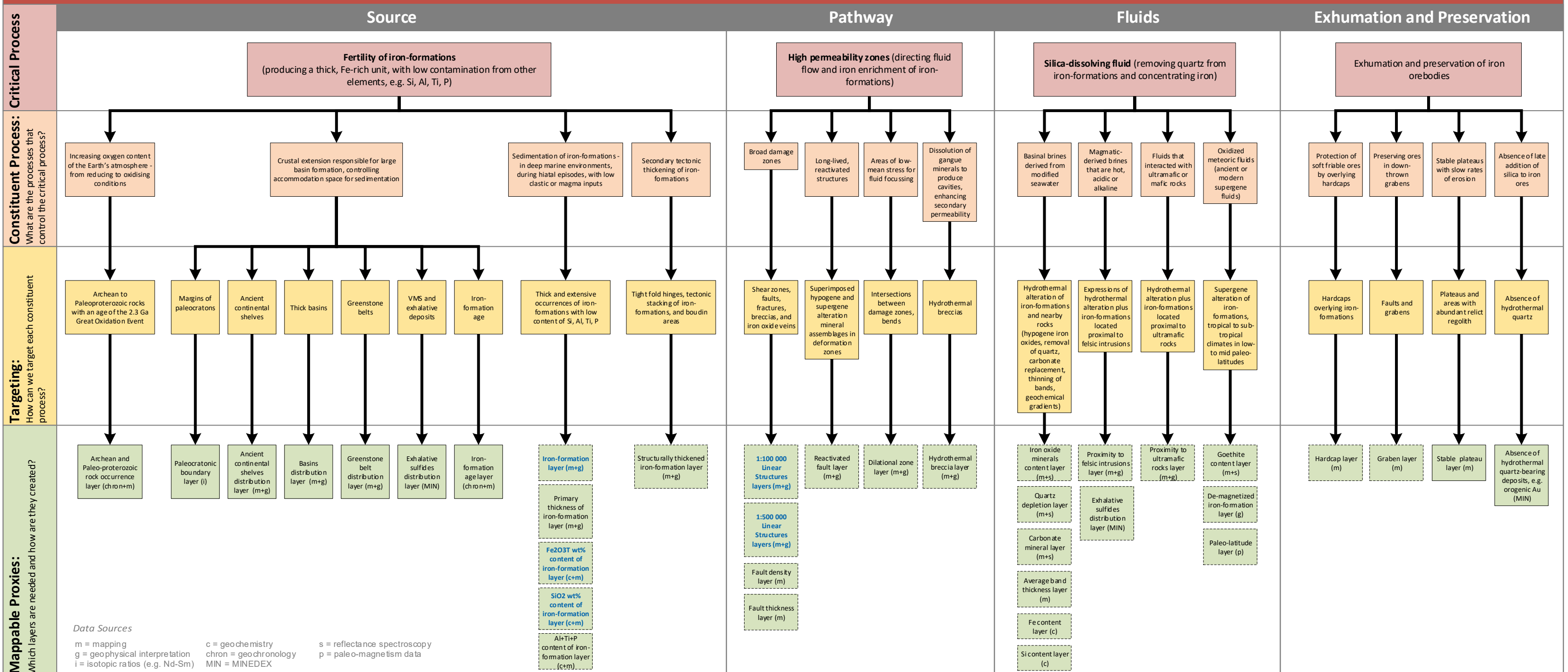


# IRON FORMATION



Data Sources

m = mapping  
g = geophysical interpretation  
i = isotopic ratios (e.g. Nd-Sm)  
c = geochemistry  
chron = geochronology  
MIN = MINEDEX  
s = reflectance spectroscopy  
p = paleo-magnetism data

Blue text = geological proxy layer available in the Atlas [hyperlinked]

Recommended reference = Geological Survey of Western Australia 2019, Mineral Systems Atlas: Iron Formation system, Department of Mines, Industry Regulations and Safety, accessed **date**, <www.dmp.wa.gov.au/msa>

Scale of use: Terrane vs District