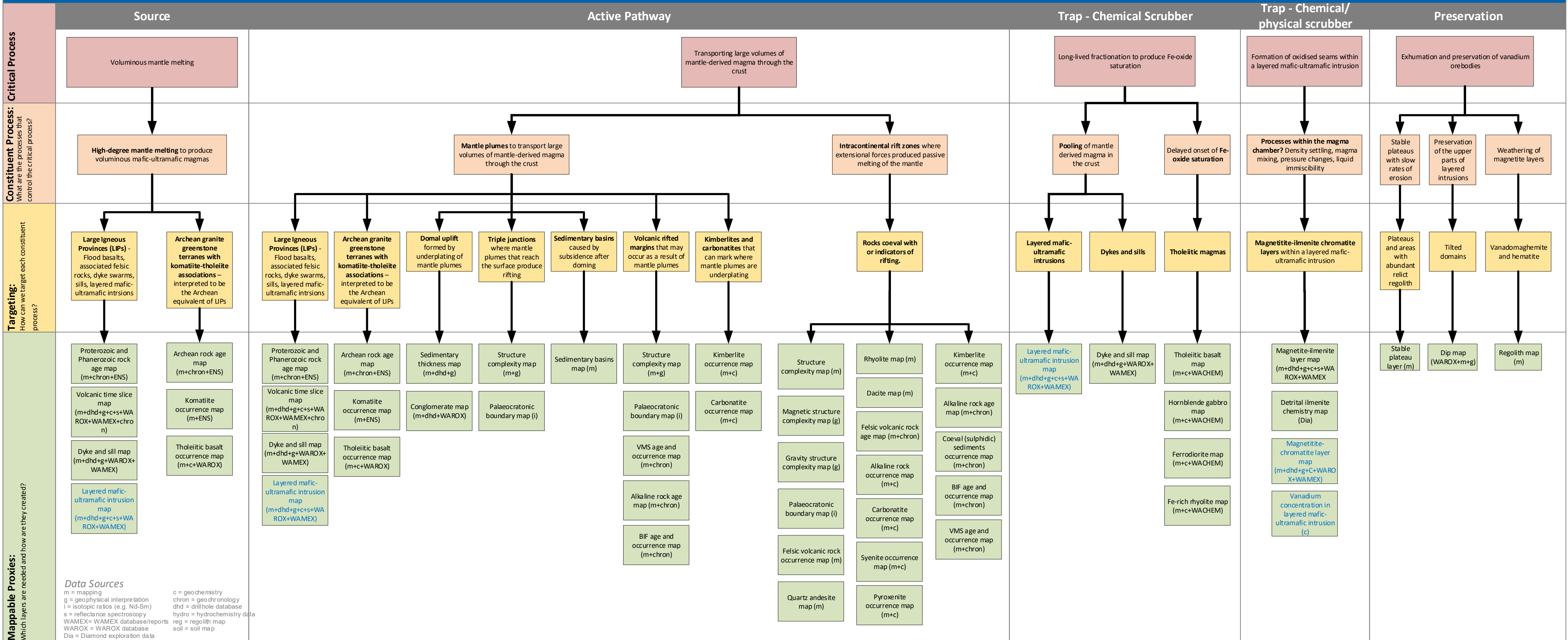


# LAYERED INTRUSION-HOSTED VANADIUM



**Data Sources**  
m = mapping  
g = geophysical interpretation  
i = isotopic ratios (e.g. Nd-Sm)  
s = reflectance spectroscopy  
WAMEX = WAMEX database/reports  
WAROX = WAROX database  
Dia = Diamond exploration data  
c = geochemistry  
chron = geochronology  
dhd = drillhole database  
hydro = hydrochemistry data  
reg = regolith map  
soil = soil map

Blue text = geological proxy layer available in the Atlas [hyperlinked]

Recommended reference = Geological Survey of Western Australia 2019, Mineral Systems Atlas: Vanadiferous Titanomagnetite system, Department of Mines, Industry Regulations and Safety, accessed date, <www.dmp.wa.gov.au/msa>