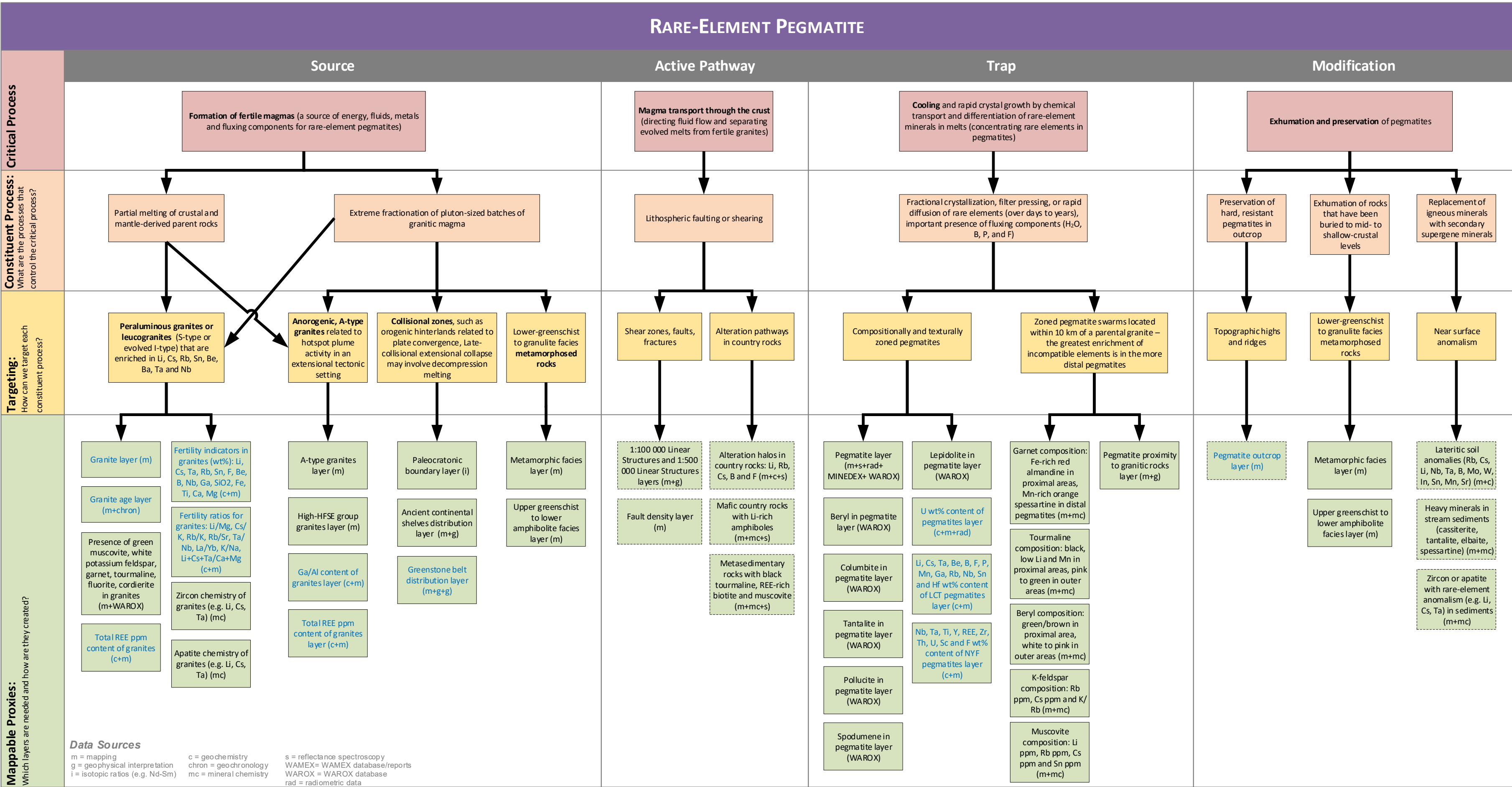


# RARE-ELEMENT PEGMATITE



Blue text = geological proxy layer available in the Atlas [hyperlinked]

Recommended reference = Geological Survey of Western Australia 2020, Mineral Systems Atlas: rare-element pegmatite system, Department of Mines, Industry Regulations and Safety, accessed **date**, <www.dmp.wa.gov.au/msa>

Scale of use: Terrane vs District